



# SZABO SCANDIC

Part of Europa Biosite

## Produktinformation



Forschungsprodukte & Biochemikalien



Zellkultur & Verbrauchsmaterial



Diagnostik & molekulare Diagnostik



Laborgeräte & Service

Weitere Information auf den folgenden Seiten!  
See the following pages for more information!



### Lieferung & Zahlungsart

siehe unsere [Liefer- und Versandbedingungen](#)

### Zuschläge

- Mindermengenzuschlag
- Trockeneiszuschlag
- Gefahrgutzuschlag
- Expressversand

### SZABO-SCANDIC HandelsgmbH

Quellenstraße 110, A-1100 Wien

T. +43(0)1 489 3961-0

F. +43(0)1 489 3961-7

[mail@szabo-scandic.com](mailto:mail@szabo-scandic.com)

[www.szabo-scandic.com](http://www.szabo-scandic.com)

[linkedin.com/company/szaboscandic](https://www.linkedin.com/company/szaboscandic) 

Technically  
Speaking

**CEDARLANE**<sup>®</sup>  
[www.cedarlanelabs.com](http://www.cedarlanelabs.com)



Conveniently Delivering You Today's Innovations  
for the Science of Tomorrow™

**Anti-Human CD59  
Monoclonal Antibody**

Catalogue#	Format	Size	Concentration	Isotype Control
<b>CL7673AP</b>	Purified	100µg	1.0 mg/ml	CLCMG100
<b>CL7673APC</b>	APC	100µg	0.1mg/ml	CLCMG105
<b>CL7673B</b>	Biotin	100µg	0.1 mg/ml	CLCMG115
<b>CL7673F</b>	FITC	100µg	0.1 mg/ml	CLCMG101
<b>CL7673PE</b>	PE	50µg	0.1mg/ml	CLCMG104

Ig Class: Mouse IgG<sub>1</sub>

**DESCRIPTION:**

CD59 (also known as HRF20, protectin) is a 20 kDa glycoprotein attached to the plasma membrane by a glycosylphosphatidylinositol (GPI) anchor. It blocks MAC formation in the complement pathway by interfering with C9 membrane insertion and polymerization, but it does not affect the generation of C3 and C5 activation products. CD59 is expressed on several cell types, including leukocytes, endothelial and epithelial cells, erythrocytes, and cells of the central nervous system. CD59 belongs to the Ly6 superfamily of proteins. This product is suitable for use in flow cytometry.

**PRESENTATION:**

**Purified:** Purified IgG buffered in PBS and 0.02% NaN<sub>3</sub>. (Purified from ascitic fluid via Protein G Chromatography). For maximum recovery of contents, spin down tube before use.  
**APC, Biotin, FITC and PE:** APC/Biotin/FITC/PE conjugated IgG buffered in PBS, 0.02% NaN<sub>3</sub> and EIA grade BSA as a stabilizing protein to bring total protein concentration to 4-5 mg/ml.

**STORAGE/STABILITY:**

For all formats, store at 4°C. DO NOT FREEZE **APC, PE** conjugates. For long term storage (**Purified, Biotin** and **FITC**), aliquot and freeze unused portion at -20°C in volumes appropriate for single usage. Avoid freeze/thaw cycles.

**SPECIFICATIONS:**

Clone: 1F5

Hybridoma Production:

Immunization: Immunogen: Neuraminidase-treated Human Erythrocytes (Neu-HuE)

Donor: Balb/c spleen

Fusion Partner: P3U- myeloma

Specificity: Human CD59

Visit our website for your local distributor.

**CEDARLANE**<sup>®</sup>



[www.cedarlanelabs.com](http://www.cedarlanelabs.com)

An ISO 9001:2000 and ISO 13485:2003  
registered company.

In CANADA: Toll Free: 1-800-268-5058

4410 Paletta Court, Burlington, ON L7L 5R2 ph: (289) 288-0001, fax: (289) 288-0020  
e-mail: [general@cedarlanelabs.com](mailto:general@cedarlanelabs.com)

In the USA: Toll Free: 1-800-721-1644

1210 Turrentine Street, Burlington, NC 27215 ph: (336) 513-5135, fax: (336) 513-5138  
e-mail: [service@cedarlanelabs.com](mailto:service@cedarlanelabs.com)

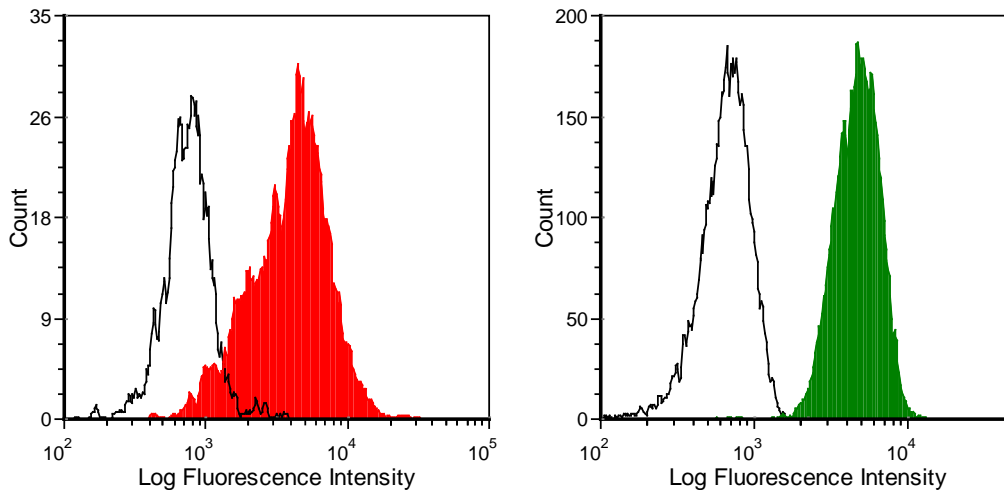
## **TEST RESULTS:**

### Tissue Distribution by Flow Cytometry Analysis:

Cell Concentration:  $1 \times 10^6$  cells per test

Antibody Concentration Used:  $1.0 \mu\text{g}/10^6$  cells

Cell Source: Lymphocytes 81.6%  
RBC 100%



Human peripheral blood lymphocytes (left) or Red Blood Cells (right) were stained with anti-CD59 (clone: 1F5) (filled histogram) or Mouse IgG1 isotype control (open histogram).

**N.B. Appropriate control samples should always be included in any labeling studies.**

**\* For optimal results in various applications, it is recommended that each investigator determine dilutions appropriate for individual use.**

## **REFERENCES:**

- 1) Yu, J., *et al.* 1997. Mapping the active site of CD59. *J. Exp. Med.* **185** (4): 745-753.
- 2) Farkas, I., *et al.* 2002. CD59 blocks not only the insertion of C9 into MAC but inhibits ion channel formation by homologous C5b-8 as well as C5b-9. *J. of Physiol.* **539** (2): 537-545.
- 3) Zheng, H., *et al.* 1999. Targeting of functional antibody-CD59 fusion proteins to a cell surface. *J. Clin. Invest.* **103**: 55-61.
- 4) Okada, N., *et al.* 1989. Monoclonal antibodies capable of causing hemolysis of neuraminidase-treated human erythrocytes by homologous complement. *J. of Immunol.* **143** (7): 2262-2266.
- 5) Yu, J., *et al.* 1997. The affected gene underlying the class K glycosylphosphatidylinositol (GPI) surface protein defect codes for the GPI transamidase. *Proc. Natl. Acad. Sci.* **94**: 12580-12585.
- 6) Chen, R., *et al.* 2000. Impaired growth and elevated Fas receptor expression in *PIGA*<sup>+</sup> stem cells in primary paroxysmal nocturnal hemoglobinuria. *J. Clin. Invest.* **106**: 689-696.

**LABORATORY REAGENT**

® is a registered trademark of Cedarlane