



# SZABO SCANDIC

Part of Europa Biosite

## Produktinformation



Forschungsprodukte & Biochemikalien



Zellkultur & Verbrauchsmaterial



Diagnostik & molekulare Diagnostik



Laborgeräte & Service

Weitere Information auf den folgenden Seiten!  
See the following pages for more information!



### Lieferung & Zahlungsart

siehe unsere [Liefer- und Versandbedingungen](#)

### Zuschläge

- Mindermengenzuschlag
- Trockeneiszuschlag
- Gefahrgutzuschlag
- Expressversand

### SZABO-SCANDIC HandelsgmbH

Quellenstraße 110, A-1100 Wien

T. +43(0)1 489 3961-0

F. +43(0)1 489 3961-7

[mail@szabo-scandic.com](mailto:mail@szabo-scandic.com)

[www.szabo-scandic.com](http://www.szabo-scandic.com)

[linkedin.com/company/szaboscandic](https://www.linkedin.com/company/szaboscandic) 

Technically  
Speaking

**CEDARLANE**<sup>®</sup>  
[www.cedarlanelabs.com](http://www.cedarlanelabs.com)



Conveniently Delivering You Today's Innovations  
for the Science of Tomorrow™

**Anti-Human C5a Receptor (CD88)  
Monoclonal Antibody**

Catalogue#	Format	Size	Concentration	Isotype Control
<b>CL7688AP</b>	Purified	250µg	1.0 mg/ml	CLCR2A00
<b>CL7688B</b>	Biotin	100µg	0.1 mg/ml	CLCR2A15
<b>CL7688F</b>	FITC	100µg	0.1 mg/ml	CLCR2A01
<b>CL7688PE</b>	PE	50µg	0.1 mg/ml	CLCR2A04
<b>CL7688AF4</b>	Alexa Fluor <sup>®</sup> 488	100 µg	0.1 mg/ml	N/A
<b>CL7688AF6</b>	Alexa Fluor <sup>®</sup> 647	100 µg	0.1 mg/ml	N/A

Alexa Fluor<sup>®</sup> is a registered trademark of Life Technologies Corporation.

Isotype: Rat IgG<sub>2a</sub>

**DESCRIPTION:**

This monoclonal antibody detects an epitope on the N terminus (aa 1-15) of the human C5a receptor (also known as CD88) found on human myeloid cells including granulocytes and monocytes/macrophages. It does not bind to tubular epithelial cells *in situ* under normal or inflammatory conditions. C5aR binds to C5a, a 74 aa peptide cleaved from complement protein C5. C5a receptor has seven transmembrane segments and is a member of the rhodopsin subfamily of G protein coupled receptors.

Applications for this clone include flow cytometry, immunohistochemistry (frozen sections) and receptor blockage assays (unpublished results).

**PRESENTATION:**

**Purified:** Purified IgG buffered in PBS and 0.02% NaN<sub>3</sub>. (Purified from ascitic fluid via Protein G Chromatography). For maximum recovery of contents, spin down tube before use.

**Biotin, FITC, PE, AF488 and AF647:** Biotin/FITC/PE/AF488 conjugated IgG buffered in PBS, 0.02% NaN<sub>3</sub> and EIA grade BSA as a stabilizing protein to bring total protein concentration to 4-5 mg/ml.

**STORAGE/STABILITY:**

Store at 4°C. DO NOT FREEZE **PE, AF488 and AF647** conjugates. For long term storage (**Purified, Biotin and FITC**), aliquot and freeze unused portion at -20°C in volumes appropriate for single usage. Avoid freeze/thaw cycles.

Continued Overleaf.....

Visit our website for your local distributor.

**CEDARLANE**<sup>®</sup>



[www.cedarlanelabs.com](http://www.cedarlanelabs.com)

An ISO 9001:2000 and ISO 13485:2003  
registered company.

In CANADA: Toll Free: 1-800-268-5058

4410 Paletta Court, Burlington, ON L7L 5R2 ph: (289) 288-0001, fax: (289) 288-0020  
e-mail: [general@cedarlanelabs.com](mailto:general@cedarlanelabs.com)

In the USA: Toll Free: 1-800-721-1644

1210 Turrentine Street, Burlington, NC 27215 ph: (336) 513-5135, fax: (336) 513-5138  
e-mail: [service@cedarlanelabs.com](mailto:service@cedarlanelabs.com)

## **SPECIFICATIONS:**

Clone: 8D6

Hybridoma Production:

Immunization:

Immunogen: RBL-2H3 (rat basophilic leukemia) transfected cells expressing human C5aR on the cell surface.

Donor: Lou/c rat spleen cells

Specificity: Human C5a Receptor (CD88)

## **TEST RESULTS:**

Tissue Distribution by Flow Cytometry Analysis:

Cell Source: Human Peripheral Blood

Cell Concentration:  $1 \times 10^6$  cells per test

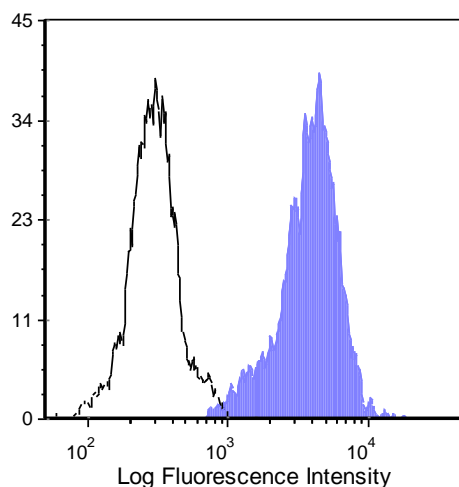
Antibody Concentration Used:  $1.0 \mu\text{g}/10^6$  cells

Cell Source

Human Granulocytes

Percentage of cells stained above control:

75 %



Human granulocytes were stained with anti-C5a receptor (CD88) (clone: 8D6) (filled histogram) or rat IgG2a isotype control (open histogram).

**N.B. Appropriate control samples should always be included in any labeling studies.**

**\* For optimal results in various applications, it is recommended that each investigator determine dilutions appropriate for individual use.**

## **REFERENCES:**

1. Kiafard, Z., *et al.* 2006. Immunobiology, **212**:129-139.
2. Zwirner, J., *et al.* 1999. Mol. Immunol. **36**:877-884.
3. Weinmann, O., *et al.* 2003. Immunology, **110**:458-465.
4. Werfel, T., *et al.* 1996. J. of Immunol., **157**:1729-1735.
5. Fayyazi, A., *et al.* 1999. Am. J. Pathol., **154**:495-501.
6. Werfel, T., *et al.* 1997. Arch Dermatol. Res., **289**:83-86.

**FOR RESEARCH USE ONLY**

® is a Registered Trademark of Cedarlane.