



SZABO SCANDIC

Part of Europa Biosite

Produktinformation



Forschungsprodukte & Biochemikalien



Zellkultur & Verbrauchsmaterial



Diagnostik & molekulare Diagnostik



Laborgeräte & Service

Weitere Information auf den folgenden Seiten!
See the following pages for more information!



Lieferung & Zahlungsart

siehe unsere [Liefer- und Versandbedingungen](#)

Zuschläge

- Mindermengenzuschlag
- Trockeneiszuschlag
- Gefahrgutzuschlag
- Expressversand

SZABO-SCANDIC HandelsgmbH

Quellenstraße 110, A-1100 Wien

T. +43(0)1 489 3961-0

F. +43(0)1 489 3961-7

mail@szabo-scandic.com

www.szabo-scandic.com

[linkedin.com/company/szaboscandic](https://www.linkedin.com/company/szaboscandic) 

Technically
Speaking

CEDARLANE[®] 
www.cedarlanelabs.com

Conveniently Delivering You Today's Innovations
for the Science of Tomorrow™

Anti-Human Galectin-8 Polyclonal Antibody

CL7772AP
CL7772AP-S
Lot: 167221

DESCRIPTION:

Galectins are a family of carbohydrate-binding proteins with an affinity for β -galactosides that are involved in a wide range of biological activities. Galectin-8 is expressed both in the cytoplasm and nucleus. The protein contains two carbohydrate recognition domains connected by a linker peptide¹. Galectin-8 is complex, and with this complexity comes multi-functionality. Some key roles of this protein include, but are not limited to, control of capillary-tube formation, control of endothelial cell migration, control on in vivo angiogenesis, and an influence on cell adhesion². Most notably, galectin-8 has recently been shown to act as a danger receptor in defense against both pathogens such as bacterial cytosolic infection, and vacuolar damage³.

PRESENTATION:

100 μ g (**CL7772AP**) or 20 μ g (**CL7772AP-S**) purified IgG buffered in PBS and 0.02% NaN₃. (Purified from serum via Affinity Chromatography). For maximum recovery of contents, spin down tube before use.

STORAGE/STABILITY:

Store at + 4°C. For long term storage, aliquot and freeze unused portion at -20°C in volumes appropriate for single usage. Avoid freeze/thaw cycles.

SPECIFICATION:

Immunogen: 14 amino acid synthetic peptide located within the human galectin-8 sequence.

Specificity: This antibody is specific for human galectin-8.

IgG Class: Rabbit IgG

Application: This antibody is suitable for use in ELISA and Western Blot (0.3 – 1 μ g/mL). This antibody has not been tested in other applications.

Continued Overleaf.....

Visit our website for your local distributor.

CEDARLANE[®] 

www.cedarlanelabs.com

An ISO 9001:2000 and ISO 13485:2003
registered company.

In CANADA: Toll Free: 1-800-268-5058

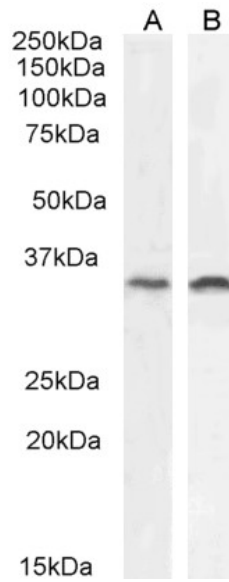
4410 Paletta Court, Burlington, ON L7L 5R2 ph: (289) 288-0001, fax: (289) 288-0020
e-mail: general@cedarlanelabs.com

In the USA: Toll Free: 1-800-721-1644

1210 Turrentine Street, Burlington, NC 27215 ph: (336) 513-5135, fax: (336) 513-5138
e-mail: service@cedarlanelabs.com

TEST RESULTS:

Western Blot:



CL7772AP (0.3 μ g/ml) staining of HepG2 (A) and HeLa (B) cell line lysates (35 μ g protein in RIPA buffer).
Primary incubation was 1 hour. Detected by chemiluminescence.

N.B. Appropriate control samples should always be included in any labeling studies.

*** For optimal results in various applications, it is recommended that each investigator determine dilutions appropriate for individual use.**

REFERENCES:

1. Thurston T, et al. (February 2012). **Galectin 8 targets damaged vesicles for autophagy to defend cells against bacterial invasion.** *Nature*. 482. 414–418.
2. Troncoso, MéFé, et al. (2014). **Galectin-8: A matricellular lectin with key roles in angiogenesis.** *Glycobiology*. 24(10), 907-914.
3. Huang J & Brumell. (February 2012). **A sweet way of sensing danger.** *Nature*. 482. 316–317.

For Research Use Only