



SZABO SCANDIC

Part of Europa Biosite

Produktinformation



Forschungsprodukte & Biochemikalien



Zellkultur & Verbrauchsmaterial



Diagnostik & molekulare Diagnostik



Laborgeräte & Service

Weitere Information auf den folgenden Seiten!
See the following pages for more information!



Lieferung & Zahlungsart

siehe unsere [Liefer- und Versandbedingungen](#)

Zuschläge

- Mindermengenzuschlag
- Trockeneiszuschlag
- Gefahrgutzuschlag
- Expressversand

SZABO-SCANDIC HandelsgmbH

Quellenstraße 110, A-1100 Wien

T. +43(0)1 489 3961-0

F. +43(0)1 489 3961-7

mail@szabo-scandic.com

www.szabo-scandic.com

[linkedin.com/company/szaboscandic](https://www.linkedin.com/company/szaboscandic) 

Technically
Speaking

CEDARLANE[®] 
www.cedarlanelabs.com

Conveniently Delivering You Today's Innovations
for the Science of Tomorrow™

Anti-Human Galectin-10 Polyclonal Antibody

CL7774AP
CL7774AP-S
Lot: 167421

DESCRIPTION:

Galectins are a family of carbohydrate-binding proteins with an affinity for β -galactosides that are involved in a wide range of biological activities. Galectin-10 is found primarily in cytoplasmic granules and comprises a major percentage of total human eosinophilic leukocyte proteins¹. It is also found in Charcot-Leyden crystals, which are oftentimes secreted in body fluids during an allergic reaction. This is significant as galectin-10 can be associated with eosinophilic inflammation and thus, has the potential to be used as a surrogate biomarker².

Studies have also shown that galectin-10 interacts with eosinophil lysophospholipases – enzymes that catalyze a hydrolase reaction – as well as inhibitors of this enzyme³, therefore regulating its function.

PRESENTATION:

100 μ g (**CL7774AP**) or 20 μ g (**CL7774AP-S**) purified IgG buffered in PBS and 0.02% NaN₃. (Purified from serum via Affinity Chromatography). For maximum recovery of contents, spin down tube before use.

STORAGE/STABILITY:

Store at + 4°C. For long term storage, aliquot and freeze unused portion at -20°C in volumes appropriate for single usage. Avoid freeze/thaw cycles.

SPECIFICATION:

Immunogen: 14 amino acid synthetic peptide located within the human galectin-10 sequence.

Specificity: This antibody is specific for human galectin-10.

IgG Class: Rabbit IgG

Application: This antibody is suitable for use in ELISA, Western Blot (0.1 – 0.3 μ g/mL) and Immunohistochemistry with paraffin embedded sections (4 μ g/mL). This antibody has not been tested in other applications.

Continued Overleaf.....

Visit our website for your local distributor.

CEDARLANE[®] 

www.cedarlanelabs.com

An ISO 9001:2000 and ISO 13485:2003
registered company.

In CANADA: **Toll Free: 1-800-268-5058**

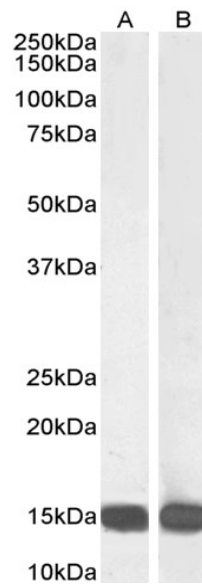
4410 Paletta Court, Burlington, ON L7L 5R2 ph: (289) 288-0001, fax: (289) 288-0020
e-mail: general@cedarlanelabs.com

In the USA: **Toll Free: 1-800-721-1644**

1210 Turrentine Street, Burlington, NC 27215 ph: (336) 513-5135, fax: (336) 513-5138
e-mail: service@cedarlanelabs.com

TEST RESULTS:

Western Blot:



CL7774AP (0.1µg/ml) staining of Human PBMCs (A) and Spleen (B) lysates (35µg protein in RIPA buffer).
Primary incubation was 1 hour. Detected by chemiluminescence.

N.B. Appropriate control samples should always be included in any labeling studies.

* For optimal results in various applications, it is recommended that each investigator determine dilutions appropriate for individual use.

REFERENCES:

1. Rosenberg, H. (2007). **Suppression, surprise: galectin-10 and Treg cells.** *Blood.* 110(5). 1407-1408.
2. Chua, J., Douglass, J. A., Gillman, A., O'Hehir, R. R., & Meeusen, E. N. (2012). **Galectin-10, a Potential Biomarker of Eosinophilic Airway Inflammation.** *PLOS ONE.* 7(8): e42549.
3. Ackerman, S. J., et al. (2002). **Charcot-Leyden Crystal Protein (Galectin-10) Is Not a Dual Function Galectin with Lysophospholipase Activity but Binds a Lysophospholipase Inhibitor in a Novel Structural Fashion.** *The Journal OF Biological Chemistry.* 277. 14859-14868.

For Research Use Only