



# SZABO SCANDIC

Part of Europa Biosite

## Produktinformation



Forschungsprodukte & Biochemikalien



Zellkultur & Verbrauchsmaterial



Diagnostik & molekulare Diagnostik



Laborgeräte & Service

Weitere Information auf den folgenden Seiten!  
See the following pages for more information!



### Lieferung & Zahlungsart

siehe unsere [Liefer- und Versandbedingungen](#)

### Zuschläge

- Mindermengenzuschlag
- Trockeneiszuschlag
- Gefahrgutzuschlag
- Expressversand

### SZABO-SCANDIC HandelsgmbH

Quellenstraße 110, A-1100 Wien

T. +43(0)1 489 3961-0

F. +43(0)1 489 3961-7

[mail@szabo-scandic.com](mailto:mail@szabo-scandic.com)

[www.szabo-scandic.com](http://www.szabo-scandic.com)

[linkedin.com/company/szaboscandic](https://www.linkedin.com/company/szaboscandic) 

Technically  
Speaking

**CEDARLANE**<sup>®</sup>   
[www.cedarlanelabs.com](http://www.cedarlanelabs.com)

Conveniently Delivering You Today's Innovations  
for the Science of Tomorrow™

## Anti-Human Galectin-13 Polyclonal Antibody

**CL7776AP**  
**CL7776AP-S**  
**Lot: 167621**

### DESCRIPTION:

Galectins are a family of carbohydrate-binding proteins with an affinity for  $\beta$ -galactosides that are involved in a wide range of biological activities. Galectin-13 is predominantly expressed by the syncytiotrophoblast, the epithelial covering of the placental villi<sup>1</sup>. Consequently, when this protein is released from the placenta it becomes part of the maternal circulation between the embryo and the mother. Galectin-13 has a key role of inducing apoptosis of activated T cells in vitro, as well as diverting and killing T cells and macrophages<sup>1</sup>. This suggests that this protein is implicated in immune functions. It has indeed been found that women with low galectin-13 levels in the first trimester of pregnancy have higher risks for developing pre-eclampsia and other diseases related to immune system dysregulation<sup>2</sup>.

Galectin-13 has also been shown to possess weak lysophospholipase activity<sup>3</sup>.

### PRESENTATION:

100  $\mu$ g (**CL7776AP**) or 20  $\mu$ g (**CL7776AP-S**) purified IgG buffered in PBS and 0.02% NaN<sub>3</sub>. (Purified from serum via Affinity Chromatography). For maximum recovery of contents, spin down tube before use.

### STORAGE/STABILITY:

Store at + 4°C. For long term storage, aliquot and freeze unused portion at -20°C in volumes appropriate for single usage. Avoid freeze/thaw cycles.

### SPECIFICATION:

Immunogen: 14 amino acid synthetic peptide located within the human galectin-13 sequence.

Specificity: This antibody is specific for human galectin-13.

IgG Class: Rabbit IgG

*Continued Overleaf.....*

Visit our website for your local distributor.

**CEDARLANE**<sup>®</sup> 

[www.cedarlanelabs.com](http://www.cedarlanelabs.com)

An ISO 9001:2000 and ISO 13485:2003  
registered company.

In CANADA: Toll Free: 1-800-268-5058

4410 Paletta Court, Burlington, ON L7L 5R2 ph: (289) 288-0001, fax: (289) 288-0020  
e-mail: [general@cedarlanelabs.com](mailto:general@cedarlanelabs.com)

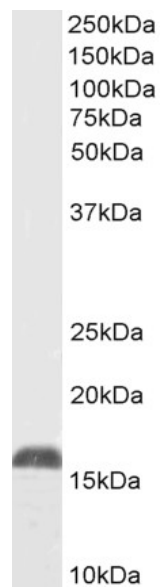
In the USA: Toll Free: 1-800-721-1644

1210 Turrentine Street, Burlington, NC 27215 ph: (336) 513-5135, fax: (336) 513-5138  
e-mail: [service@cedarlanelabs.com](mailto:service@cedarlanelabs.com)

Application: This antibody is suitable for use in ELISA, Western Blot (1 – 3 µg/mL) and Immunohistochemistry with paraffin embedded sections (4 µg/mL). This antibody has not been tested in other applications.

### **TEST RESULTS:**

#### Western Blot:



CL7776AP (1µg/ml) staining of a human placenta lysate (35µg protein in RIPA buffer).  
Primary incubation was 1 hour. Detected by chemiluminescence.

**N.B.** Appropriate control samples should always be included in any labeling studies.

\* For optimal results in various applications, it is recommended that each investigator determine dilutions appropriate for individual use.

### **REFERENCES:**

1. Than, N.G., et al. (2014). **Placental Protein 13 (PP13) - A Placental Immunoregulatory Galectin Protecting Pregnancy.** *Frontiers in Immunology.* 5(348).
2. Huppertz, B., Meiri, H., Gizurarson, S., Osol, G., & Sammar M. (2013). **Placental protein 13 (PP13): a new biological target shifting individualized risk assessment to personalized drug design combating pre-eclampsia.** *Hum. Reprod. Update.* 19 (4): 391–405.
3. Than, N.G., et al. (2004). **Functional analyses of placental protein 13/galectin-13.** *European Journal of Biochemistry.* 271(6). 1065-1078.

**For Research Use Only**