



SZABO SCANDIC

Part of Europa Biosite

Produktinformation



Forschungsprodukte & Biochemikalien



Zellkultur & Verbrauchsmaterial



Diagnostik & molekulare Diagnostik



Laborgeräte & Service

Weitere Information auf den folgenden Seiten!
See the following pages for more information!



Lieferung & Zahlungsart

siehe unsere [Liefer- und Versandbedingungen](#)

Zuschläge

- Mindermengenzuschlag
- Trockeneiszuschlag
- Gefahrgutzuschlag
- Expressversand

SZABO-SCANDIC HandelsgmbH

Quellenstraße 110, A-1100 Wien

T. +43(0)1 489 3961-0

F. +43(0)1 489 3961-7

mail@szabo-scandic.com

www.szabo-scandic.com

[linkedin.com/company/szaboscandic](https://www.linkedin.com/company/szaboscandic) 

Technically
Speaking

CEDARLANE[®] 
www.cedarlanelabs.com

Conveniently Delivering You Today's Innovations
for the Science of Tomorrow™

**Anti-Human Myelin Basic Protein (MBP)
Polyclonal Antibody**

CL7790AP
CL7790AP-S
Lot: 189022

DESCRIPTION:

Myelin Basic Protein (MBP) is a hydrophilic protein that is expressed primarily in oligodendrocytes. It is expressed as a number of isoforms and is important in the process of myelination of nerves and creating the myelin sheath. The myelin sheath is a multi-layered membrane that acts as an insulator to greatly increase the velocity of axonal impulse conduction. Loss of integrity of the myelin sheath is observed in demyelinating diseases such as multiple sclerosis (MS).

PRESENTATION:

100 µg (CL7790AP) or 20 µg (CL7790AP-S) purified IgG (1 mg/ml) buffered in PBS and 0.02% NaN₃. (Purified from serum via Affinity Chromatography). For maximum recovery of contents, spin down tube before use.

STORAGE/STABILITY:

Store at + 4°C. For long term storage, aliquot and freeze unused portion at -20°C in volumes appropriate for single usage. Avoid freeze/thaw cycles.

SPECIFICATION:

Immunogen: 15 amino acid synthetic peptide located near the N-terminus of human MBP.

Specificity: This antibody is specific for human MBP, isoform 1.

IgG Class: Rabbit IgG

Application: This antibody is suitable for use in Western Blot (0.3 – 1 µg/mL) and Immunohistochemistry with paraffin embedded sections (4 µg/mL). This antibody has not been tested in other applications.

Continued....

Visit our website for your local distributor.

CEDARLANE[®] 

www.cedarlanelabs.com

An ISO 9001:2015 and ISO 13485:2016
registered company.

In CANADA: **Toll Free: 1-800-268-5058**

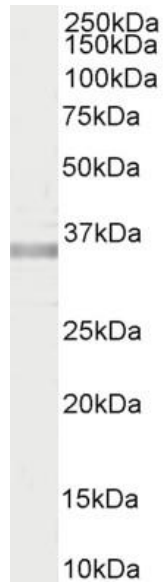
4410 Paletta Court, Burlington, ON L7L 5R2 ph: (289) 288-0001, fax: (289) 288-0020
e-mail: general@cedarlanelabs.com

In the USA: **Toll Free: 1-800-721-1644**

1210 Turrentine Street, Burlington, NC 27215 ph: (336) 513-5135, fax: (336) 513-5138
e-mail: service@cedarlanelabs.com

TEST RESULTS:

Western Blot:



CL7790AP (0.3 μ g/ml) staining of a human brain (cerebral cortex) lysate (35 μ g protein in RIPA buffer). Detected by chemiluminescence.

N.B. Appropriate control samples should always be included in any labeling studies.

* For optimal results in various applications, it is recommended that each investigator determine dilutions appropriate for individual use.

REFERENCES:

1. Sakamoto Y, Kitamura K, et al. (1987) Complete amino acid sequence of PO protein in bovine peripheral nerve myelin. *J Biol Chem.* 262(9):4208-14.
2. Harauz G, Ishiyama N, et al. (2004) Myelin basic protein-diverse conformational states of an intrinsically unstructured protein and its roles in myelin assembly and multiple sclerosis. *Micron.* 35 (7): 503–42.

For Research Use Only