



# SZABO SCANDIC

Part of Europa Biosite

## Produktinformation



Forschungsprodukte & Biochemikalien



Zellkultur & Verbrauchsmaterial



Diagnostik & molekulare Diagnostik



Laborgeräte & Service

Weitere Information auf den folgenden Seiten!  
See the following pages for more information!



### Lieferung & Zahlungsart

siehe unsere [Liefer- und Versandbedingungen](#)

### Zuschläge

- Mindermengenzuschlag
- Trockeneiszuschlag
- Gefahrgutzuschlag
- Expressversand

### SZABO-SCANDIC HandelsgmbH

Quellenstraße 110, A-1100 Wien

T. +43(0)1 489 3961-0

F. +43(0)1 489 3961-7

[mail@szabo-scandic.com](mailto:mail@szabo-scandic.com)

[www.szabo-scandic.com](http://www.szabo-scandic.com)

[linkedin.com/company/szaboscandic](https://www.linkedin.com/company/szaboscandic) 

Technically  
Speaking

**CEDARLANE**<sup>®</sup>   
[www.cedarlanelabs.com](http://www.cedarlanelabs.com)

Conveniently Delivering You Today's Innovations  
for the Science of Tomorrow™

**Anti-Mouse CD90 (Thy 1.2)  
Monoclonal Antibody**

Catalogue#	Format	Size	Concentration	Isotype Control
CL8600	Supernatant	1.0ml		CLCMG2B00
CL8600A	Ascites	0.5 ml	N/A	CLCMG2B00
CL8600A-BULK	Ascites	1.0 ml	N/A	CLCMG2B00
CL8600AP	Purified	250 ug	1.0 mg/ml	CLCMG2B00
CL8600AP-BULK	Purified	1.0 mg	1.0 mg/ml	CLCMG2B00
CL8600APC	APC	100 ug	0.1 mg/ml	CLCMG2B05
CL8600B/-3/-1MG	Biotin	100 ug/300 ug/1.0 mg	0.1 mg/ml	CLCMG2B15
CL8600F/-3	FITC	100 ug/300 ug	0.1 mg/ml	CLCMG2B01
CL8600PE/-3/-100	PE	50 ug/300 ug/100 ug	0.1 mg/ml	CLCMG2B04
CL8600AF4	Alexa Fluor <sup>®</sup> 488	100 µg	0.1 mg/ml	N/A

Alexa Fluor<sup>®</sup> is a registered trademark of Life Technologies Corporation.

Ig Class: Mouse IgG<sub>2b</sub>, κ

**DESCRIPTION:**

Cedarlane's anti-mouse CD90 (Thy 1.2) monoclonal antibody reacts with all T lymphocytes from mouse strains expressing the Thy 1.2 phenotype (i.e. C57BL/6, C3H/He, DBA/2, CBA/J, BALB/c), but does not react with lymphocytes expressing the Thy 1.1 phenotype (i.e. AKR/J, B6.PL (74 NS)).

**PRESENTATION:**

**Purified:** Purified IgG buffered in PBS and 0.02% NaN<sub>3</sub>. (Purified from ascitic fluid via Protein G Chromatography). For maximum recovery of contents, spin down tube before use.

**Biotin, FITC, PE, APC and AF488:** Biotin/FITC/PE/APC/AF488 conjugated IgG buffered in PBS, 0.02% NaN<sub>3</sub> and EIA grade BSA as a stabilizing protein to bring total protein concentration to 4-5 mg/ml.

**STORAGE/STABILITY:**

For all formats, store at 4°C. DO NOT FREEZE PE, APC and AF488 conjugates. For long term storage (**Purified, Biotin, FITC**), aliquot and freeze unused portion at -20°C in volumes appropriate for single usage. Avoid freeze/thaw cycles.

Visit our website for your local distributor.

**CEDARLANE**<sup>®</sup> 

[www.cedarlanelabs.com](http://www.cedarlanelabs.com)

An ISO 9001:2000 and ISO 13485:2003  
registered company.

In CANADA: **Toll Free: 1-800-268-5058**

4410 Paletta Court, Burlington, ON L7L 5R2 ph: (289) 288-0001, fax: (289) 288-0020  
e-mail: [general@cedarlanelabs.com](mailto:general@cedarlanelabs.com)

In the USA: **Toll Free: 1-800-721-1644**

1210 Turrentine Street, Burlington, NC 27215 ph: (336) 513-5135, fax: (336) 513-5138  
e-mail: [service@cedarlanelabs.com](mailto:service@cedarlanelabs.com)

**SPECIFICATIONS:**

Clone: 5a-8

Hybridoma Production:

Immunization: Immunogen: CBA/J  
Donor: AKR/J Spleen  
Fusion Partner: Spleen from immunized recipient fused with myeloma P3-NSI-1-Ag4-1

Specificity: Mouse CD90 (Thy 1.2)

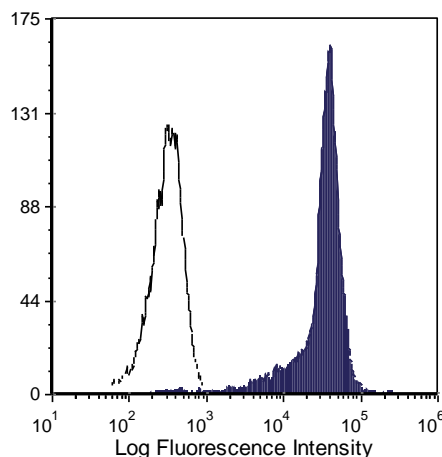
**TEST RESULTS:**

Tissue Distribution by Flow Cytometry Analysis:

Mouse Strain: BALB/c  
Cell Concentration : 1x10<sup>6</sup> cells per test  
Antibody Concentration Used: 1 µg/10<sup>6</sup> cells

Cell Source  
Thymus

Percentage of cells stained above control:  
98.4%



Balb/c mouse thymocytes stained with anti-CD90 (Thy 1.2) (clone: 5a-8) (filled histogram) or mouse IgG2b isotype control (open histogram).

**N.B. Appropriate control samples should always be included in any labeling studies.**

**\* For optimal results in various applications, it is recommended that each investigator determine dilutions appropriate for individual use.**

Strain Distribution by Flow Cytometry Analysis:

Cell Concentration : 1x10<sup>6</sup> cells per test  
Antibody Concentration Used: 1 µg/10<sup>6</sup> cells  
Strains Tested: C57BL/6, C3H/He, CBA/J, BALB/c, ATL, AKR/J  
Positive: C57BL/6, C3H/He, CBA/J, BALB/c, ATL  
Negative: AKR/J

**REFERENCES:**

1. Krieg, A., Gourley, M. and Steinberg, A. 1991. Association of Murine Lupus and Thymic Full-Length Endeneous Retroviral Expression Maps To A Bone Marrow Stem Cell. J. Immunol. 146:3002- 3005.
2. Haba, S. and Nisonoff, A., 1991. Induction of Tolerance To Syngeneic IgE In Neonatal Mice. J. Immunol. 146:807-811.
3. Miyajima, H., Takao, H., et al. 1991. Suppression By IL-2 Of IgE Production By B Cells Stimulated By IL-4. J. Immunol. 146:457- 462.
4. Kruger, M. and Riley, R. 1990. The Age-Dependent Loss Of Bone Marrow B Cell Precursors In Autoimmune NZ Mice Results From Decreased Mitotic Activity, But Not From Inherent Stromal Cell Defects. J. Immunol. 144:103-110.
5. Fine, J., Siverstone, A. and Gasiewicz, T. 1990. Impairment Of Prothymocyte Activity By 2,3,7,8-Tetrachlorocibenzo-p-Dioxin. J. Immunol. 144:1169-1176.

**FOR RESEARCH USE ONLY**

® is a Registered Trademark of Cedarlane Laboratories Limited.