



# SZABO SCANDIC

Part of Europa Biosite

## Produktinformation



Forschungsprodukte & Biochemikalien



Zellkultur & Verbrauchsmaterial



Diagnostik & molekulare Diagnostik



Laborgeräte & Service

Weitere Information auf den folgenden Seiten!  
See the following pages for more information!



### Lieferung & Zahlungsart

siehe unsere [Liefer- und Versandbedingungen](#)

### Zuschläge

- Mindermengenzuschlag
- Trockeneiszuschlag
- Gefahrgutzuschlag
- Expressversand

### SZABO-SCANDIC HandelsgmbH

Quellenstraße 110, A-1100 Wien

T. +43(0)1 489 3961-0

F. +43(0)1 489 3961-7

[mail@szabo-scandic.com](mailto:mail@szabo-scandic.com)

[www.szabo-scandic.com](http://www.szabo-scandic.com)

[linkedin.com/company/szaboscandic](https://www.linkedin.com/company/szaboscandic) 

Technically  
Speaking

**CEDARLANE**<sup>®</sup>  
[www.cedarlanelabs.com](http://www.cedarlanelabs.com)



Conveniently Delivering You Today's Innovations  
for the Science of Tomorrow™

**Anti-Mouse CD90 (Thy1)  
Monoclonal Antibody**

Catalogue#	Format	Size	Concentration	Isotype Control
CL8610AP	Purified	250 µg	1.0 mg/ml	CLCR100
CL8610B	Biotin	100 µg	0.1 mg/ml	CLCR115
CL8610B-3	Biotin	300 µg	0.1 mg/ml	CLCR115
CL8610F	FITC	100 µg	0.1 mg/ml	CLCR101
CL8610F-3	FITC	300 µg	0.1 mg/ml	CLCR101
CL8610PE	PE	50 µg	0.1 mg/ml	CLCR104
CL8610PE-3	PE	300 µg	0.1 mg/ml	CLCR104

Isotype: Rat IgG<sub>1,K</sub>

**DESCRIPTION:**

Cedarlane's anti-mouse CD90 (Thy 1) monoclonal antibody recognizes the Thy 1 antigen which is a GPI-linked glycoprotein member of the Ig-superfamily. Thy 1, also known as CD90, is expressed on murine T cells, thymocytes, neural cells, Kupffer's cells and fibroblasts. This monoclonal antibody has been shown to deplete peripheral T cells upon *in vivo* administration.

Applications for this antibody include immunohistochemistry (acetone-fixed frozen sections), flow cytometry and immunoprecipitation.

**PRESENTATION:**

**Purified:** Purified Ig buffered in PBS and 0.02% NaN<sub>3</sub>. Purified from ascitic fluid via Protein G Chromatography). For maximum recovery of contents, spin down tube before use.

**Biotin, FITC and PE:** Biotin/FITC/PE conjugated IgG buffered in PBS, 0.02% NaN<sub>3</sub> and EIA grade BSA as a stabilizing protein to bring total protein concentration to 4-5 mg/ml.

**STORAGE/STABILITY:**

For all formats, store at 4°C. DO NOT FREEZE PE conjugates. For long term storage (**Purified, Biotin, FITC**), aliquot and freeze unused portion at -20°C in volumes appropriate for single usage. Avoid freeze/thaw cycles.

Visit our website for your local distributor.

**CEDARLANE**<sup>®</sup>



[www.cedarlanelabs.com](http://www.cedarlanelabs.com)

An ISO 9001:2000 and ISO 13485:2003  
registered company.

In CANADA: Toll Free: 1-800-268-5058

4410 Paletta Court, Burlington, ON L7L 5R2 ph: (289) 288-0001, fax: (289) 288-0020  
e-mail: [general@cedarlanelabs.com](mailto:general@cedarlanelabs.com)

In the USA: Toll Free: 1-800-721-1644

1210 Turrentine Street, Burlington, NC 27215 ph: (336) 513-5135, fax: (336) 513-5138  
e-mail: [service@cedarlanelabs.com](mailto:service@cedarlanelabs.com)

## **SPECIFICATIONS:**

Clone: IBL-1

### Hybridoma Production:

Immunization: Immunogen: Mouse spleen cells

Donor: Rat (Wistar)

Fusion Partner: Sp-2/0 Ag14

Specificity: Mouse CD90 (Thy 1)

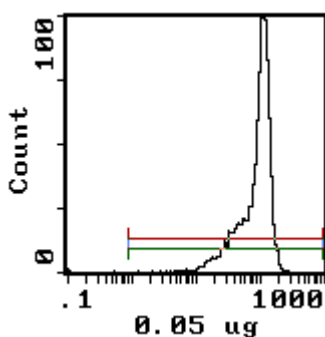
## **TEST RESULTS:**

### Tissue Distribution by Flow Cytometry Analysis:

Mouse Strain: BALB/c

Cell Concentration:  $1 \times 10^6$  cells per test

Antibody Concentration Used:  $0.05 \mu\text{g}/10^6$  cells



Anti-Mouse CD90 (Thy 1)

Cell Source: Thymus

Percentage of cells stained above control: 99.7%

**N.B. Appropriate control samples should always be included in any labeling studies.**

**\* For optimal results in various applications, it is recommended that each investigator determine dilutions appropriate for individual use.**

## **REFERENCES:**

1. Balogh P, Szekeres G and Nemeth P. (1994) Hapten- mediated identification of cell membrane antigens using an anti-FITC monoclonal antibody. *J Immunol Methods* 169:35-40.
2. Balogh P, Bebok Z and Nemeth P. (1992) Cellular enzyme-linked immunocircle assay. A rapid assay of hybridomas produced against cell surface antigens. *J Immunol Methods* 153:141-9.

**FOR RESEARCH USE ONLY**