



# SZABO SCANDIC

Part of Europa Biosite

## Produktinformation



Forschungsprodukte & Biochemikalien



Zellkultur & Verbrauchsmaterial



Diagnostik & molekulare Diagnostik



Laborgeräte & Service

Weitere Information auf den folgenden Seiten!  
See the following pages for more information!



### Lieferung & Zahlungsart

siehe unsere [Liefer- und Versandbedingungen](#)

### Zuschläge

- Mindermengenzuschlag
- Trockeneiszuschlag
- Gefahrgutzuschlag
- Expressversand

### SZABO-SCANDIC HandelsgmbH

Quellenstraße 110, A-1100 Wien

T. +43(0)1 489 3961-0

F. +43(0)1 489 3961-7

[mail@szabo-scandic.com](mailto:mail@szabo-scandic.com)

[www.szabo-scandic.com](http://www.szabo-scandic.com)

[linkedin.com/company/szaboscandic](https://www.linkedin.com/company/szaboscandic) 

Technically  
Speaking

**CEDARLANE**<sup>®</sup>  
[www.cedarlanelabs.com](http://www.cedarlanelabs.com)



Conveniently Delivering You Today's Innovations  
for the Science of Tomorrow™

### Rabbit Anti-R-PE Polyclonal Antibody

Catalogue#	Format	Size	Concentration
<b>CL8888AP</b>	Purified	500 µg	1.0 mg/ml
<b>CL8888F</b>	FITC	100 µg	0.1 mg/ml

**Isotype:** Rabbit IgG

#### DESCRIPTION:

Cedarlanes Rabbit Anti-R-PE polyclonal antibody is prepared by immunizing New Zealand white rabbits with highly purified PE and isolating the antibody from rabbit serum. This antibody reacts with R-phycoerythrin (R-PE), a 240 kDa fluorescent protein isolated from red algae. Applications for this antibody include Flow Cytometry, Immunohistochemistry and ELISA.

#### PRESENTATION:

**Purified:** Purified IgG buffered in PBS and 0.02% NaN<sub>3</sub>. (Purified from antiserum via Affinity Chromatography). For maximal recovery of contents, please quick-spin vial before opening.

**FITC:** FITC conjugated IgG buffered in PBS, 0.02% NaN<sub>3</sub> and EIA grade BSA as a stabilizing protein to bring total protein concentration to 4-5 mg/ml.

#### STORAGE/STABILITY:

Store at +4°C. For long term storage, aliquot and freeze unused portions at -20°C in volumes appropriate for single usage. Avoid repeated freeze and thaw cycles.

#### TEST RESULTS:

**CL8888AP** tested in ELISA – titre of 1:2000

Secondary Used: HRP Goat Anti-Rabbit IgG (**CLCC42007**) at a dilution of 1:4000.

*Continued Overleaf....*

Visit our website for your local distributor.

**CEDARLANE**<sup>®</sup>



[www.cedarlanelabs.com](http://www.cedarlanelabs.com)

An ISO 9001:2000 and ISO 13485:2003  
registered company.

In CANADA: **Toll Free: 1-800-268-5058**

4410 Paletta Court, Burlington, ON L7L 5R2 ph: (289) 288-0001, fax: (289) 288-0020  
e-mail: [general@cedarlanelabs.com](mailto:general@cedarlanelabs.com)

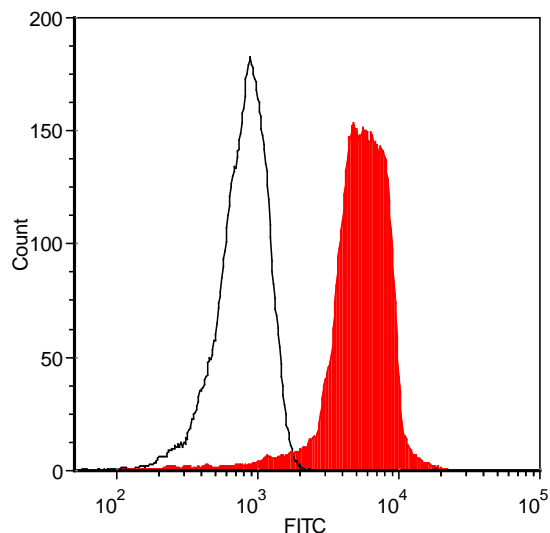
In the USA: **Toll Free: 1-800-721-1644**

1210 Turrentine Street, Burlington, NC 27215 ph: (336) 513-5135, fax: (336) 513-5138  
e-mail: [service@cedarlanelabs.com](mailto:service@cedarlanelabs.com)

**CL8888F** tested in Flow Cytometry:

Concentration:  $1 \times 10^6$  beads per test.

Antibody Concentration Used:  $1.0 \mu\text{g}/10^6$  beads



PE conjugated polystyrene beads were stained with CL8888F (filled histogram) or rabbit IgG, FITC isotype control (open histogram).

#### **REFERENCES:**

1. Oi, V.T., et al. (1982). Fluorescent phycobiliprotein conjugates for analyses of cells and molecules. *J. Cell Biol.* **93**, 981-986.
2. Kronick, M.N. and Grossman, P.D. (1983). Immunoassay techniques with fluorescent phycobiliprotein conjugates. *Clin. Chem.* **29**, 1582-1586.

**Optimum conditions for use of this antibody in analytical procedures should be established in each laboratory**  
**Laboratory Reagent For Research Use Only**