



# SZABO SCANDIC

Part of Europa Biosite

## Produktinformation



Forschungsprodukte & Biochemikalien



Zellkultur & Verbrauchsmaterial



Diagnostik & molekulare Diagnostik



Laborgeräte & Service

Weitere Information auf den folgenden Seiten!  
See the following pages for more information!



### Lieferung & Zahlungsart

siehe unsere [Liefer- und Versandbedingungen](#)

### Zuschläge

- Mindermengenzuschlag
- Trockeneiszuschlag
- Gefahrgutzuschlag
- Expressversand

### SZABO-SCANDIC HandelsgmbH

Quellenstraße 110, A-1100 Wien

T. +43(0)1 489 3961-0

F. +43(0)1 489 3961-7

[mail@szabo-scandic.com](mailto:mail@szabo-scandic.com)

[www.szabo-scandic.com](http://www.szabo-scandic.com)

[linkedin.com/company/szaboscandic](https://www.linkedin.com/company/szaboscandic) 

Technically  
Speaking

**CEDARLANE**<sup>®</sup>  
[www.cedarlanelabs.com](http://www.cedarlanelabs.com)



Conveniently Delivering You Today's Innovations  
for the Science of Tomorrow™

**Anti-Mouse CD5 (Ly 1.2)  
Monoclonal Antibody**

Catalogue#	Format	Size	Concentration	Isotype Control
<b>CL8912A</b>	Ascites	0.5ml	NA	CLCMG2B00
<b>CL8912AP</b>	Purified	250µg	1.0 mg/ml	CLCMG2B00
<b>CL8912NA</b>	No Azide	1.0mg	1.0 mg/ml	CLCMG2B00
<b>CL8912B/-3</b>	Biotin	100µg/300µg	0.1 mg/ml	CLCMG2B15
<b>CL8912F/-3</b>	FITC	100µg/300µg	0.1 mg/ml	CLCMG2B01
<b>CL8912PE/-3</b>	PE	50µg/300µg	0.1 mg/ml	CLCMG2B04

Isotype: Mouse IgG<sub>2b</sub>

**DESCRIPTION:**

Cedarlane's anti-mouse CD5 (Ly 1.2) monoclonal antibody reacts with all T lymphocytes from mouse strains expressing the Ly 1.2 phenotype, but does not react with lymphocytes from mouse strains expressing the Ly 1.1 phenotype.

**PRESENTATION:**

**Ascites:** Lyophilized

**Purified:** Purified IgG buffered in PBS and 0.02% NaN<sub>3</sub>. (Purified from ascitic fluid via Protein G Chromatography). For maximum recovery of contents, spin down tube before use.

**Biotin, FITC and PE:** Biotin/FITC/PE conjugated IgG buffered in PBS, 0.02% NaN<sub>3</sub> and EIA grade BSA as a stabilizing protein to bring total protein concentration to 4-5 mg/ml.

**No Azide:** Purified Ig buffered in PBS, no preservative, 0.2µm sterile filtered.

**STORAGE/STABILITY:**

Store **Ascites** at -20°C. For all other formats, store at 4°C. **DO NOT FREEZE PE** conjugates. For long term storage (**Purified, Biotin, NA and FITC**), aliquot and freeze unused portion at -20°C in volumes appropriate for single usage. Avoid freeze/thaw cycles.

**SPECIFICATIONS:**

Clone: CG16

Hybridoma Production:

Immunization: Immunogen: C3H.CE-Ly 1.2:DS  
Donor: C3H spleen

Fusion Partner: Myeloma SP2/0 - Ag 14 (M5)

Visit our website for your local distributor.

**CEDARLANE**<sup>®</sup>



[www.cedarlanelabs.com](http://www.cedarlanelabs.com)

An ISO 9001:2000 and ISO 13485:2003  
registered company.

In CANADA: **Toll Free: 1-800-268-5058**

4410 Paletta Court, Burlington, ON L7L 5R2 ph: (289) 288-0001, fax: (289) 288-0020  
e-mail: [general@cedarlanelabs.com](mailto:general@cedarlanelabs.com)

In the USA: **Toll Free: 1-800-721-1644**

1210 Turrentine Street, Burlington, NC 27215 ph: (336) 513-5135, fax: (336) 513-5138  
e-mail: [service@cedarlanelabs.com](mailto:service@cedarlanelabs.com)

Specificity: Mouse CD5 (Ly 1.2)

Strains Tested: AKR, ATH, BALB/c, CBA/J, C3H/He

Positive: AKR, ATH, BALB/c

Negative: CBA/J, C3H/He

**TEST RESULTS:**

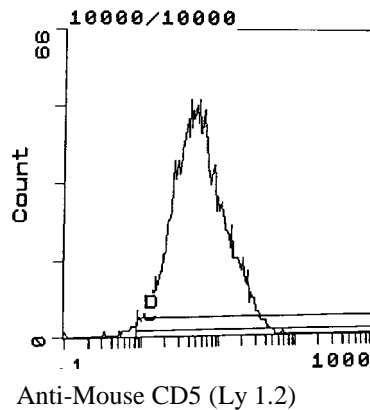
Tissue Distribution by Flow Cytometry Analysis:

Mouse Strain: BALB/c

Cell Concentration:  $1 \times 10^6$  cells per tests

Antibody Concentration Used:  $0.5 \mu\text{g}/10^6$  cells

<u>Cell Source</u>	<u>Percentage of cells stained above control:</u>
Thymus	98.9%
Spleen	33.5%
Lymph Node	88.6%
Bone Marrow	3.3%



Cell Source: Thymus

**N.B. Appropriate control samples should always be included in any labeling studies.**

**\* For optimal results in various applications, it is recommended that each investigator determine dilutions appropriate for individual use.**

**FOR RESEARCH USE ONLY**

® is a Registered Trademark of Cedarlane