



# SZABO SCANDIC

Part of Europa Biosite

## Produktinformation



Forschungsprodukte & Biochemikalien



Zellkultur & Verbrauchsmaterial



Diagnostik & molekulare Diagnostik



Laborgeräte & Service

Weitere Information auf den folgenden Seiten!  
See the following pages for more information!



### Lieferung & Zahlungsart

siehe unsere [Liefer- und Versandbedingungen](#)

### Zuschläge

- Mindermengenzuschlag
- Trockeneiszuschlag
- Gefahrgutzuschlag
- Expressversand

### SZABO-SCANDIC HandelsgmbH

Quellenstraße 110, A-1100 Wien

T. +43(0)1 489 3961-0

F. +43(0)1 489 3961-7

[mail@szabo-scandic.com](mailto:mail@szabo-scandic.com)

[www.szabo-scandic.com](http://www.szabo-scandic.com)

[linkedin.com/company/szaboscandic](https://www.linkedin.com/company/szaboscandic) 

Technically  
Speaking

**CEDARLANE**<sup>®</sup>  
[www.cedarlanelabs.com](http://www.cedarlanelabs.com)



Conveniently Delivering You Today's Innovations  
for the Science of Tomorrow™

### Anti-Mouse CD49d Monoclonal Antibody

Catalogue#	Format	Size	Concentration	Isotype Control
<b>CL8919A</b>	Ascites	0.5ml	NA	CLCR2B00
<b>CL8919AP</b>	Purified	250µg	1.0 mg/ml	CLCR2B00
<b>CL8919B/-3</b>	Biotin	100µg/300µg	0.1 mg/ml	CLCR2B15
<b>CL8919F/-3</b>	FITC	100µg/300µg	0.1 mg/ml	CLCR2B01
<b>CL8919PE/-3</b>	PE	50µg/300µg	0.1 mg/ml	CLCR2B04

Isotype: Rat IgG<sub>2b</sub>

#### **DESCRIPTION:**

Cedarlane's anti-mouse CD49d monoclonal antibody reacts with  $\alpha 4$  integrin, which helps to mediate cell-cell and cell-matrix interactions.  $\alpha 4$  integrin combines with  $\beta 1$  and  $\beta 7$  integrin to form VLA-4 and LPAM-1 (Peyers patch homing receptor) respectively. VLA-4 is expressed on most peripheral lymphocytes, thymocytes and monocytes. LPAM-1 is found on peripheral lymphocytes, but few thymocytes. Fibronectin and VCAM-1 act as ligands for both VLA-4 and LPAM-1. LPAM-1 also binds the mucosal vascular addressin MAdCAM-1. (1)

Applications of this clone include flow cytometry, immunoprecipitation and immunohistochemistry. (1, 2, 3)

#### **PRESENTATION:**

**Ascites:** Lyophilized

**Purified:** Purified IgG buffered in PBS and 0.02% NaN<sub>3</sub>. (Purified from ascitic fluid via Protein G Chromatography). For maximum recovery of contents, spin down tube before use.

**Biotin, FITC and PE:** Biotin/FITC/PE conjugated IgG buffered in PBS, 0.02% NaN<sub>3</sub> and EIA grade BSA as a stabilizing protein to bring total protein concentration to 4-5 mg/ml.

#### **STORAGE/STABILITY:**

Store **Ascites** at -20°C. For all other formats, store at 4°C. DO NOT FREEZ **PE** conjugates. For long term storage (**Purified, Biotin, and FITC**), aliquot and freeze unused portion at -20°C in volumes appropriate for single usage. Avoid freeze/thaw cycles.

Visit our website for your local distributor.

**CEDARLANE**<sup>®</sup>



[www.cedarlanelabs.com](http://www.cedarlanelabs.com)

An ISO 9001:2000 and ISO 13485:2003  
registered company.

In CANADA: Toll Free: 1-800-268-5058

4410 Paletta Court, Burlington, ON L7L 5R2 ph: (289) 288-0001, fax: (289) 288-0020  
e-mail: [general@cedarlanelabs.com](mailto:general@cedarlanelabs.com)

In the USA: Toll Free: 1-800-721-1644

1210 Turrentine Street, Burlington, NC 27215 ph: (336) 513-5135, fax: (336) 513-5138  
e-mail: [service@cedarlanelabs.com](mailto:service@cedarlanelabs.com)

## **SPECIFICATIONS:**

Clone: R1-2

### Hybridoma Production:

Immunization: Immunogen: Peyers Patch HEV binding lymphoma line (TK1)  
Donor: Fischer Spleen  
Fusion Partner: P3x63Ag8.653

Specificity: Mouse CD49d ( $\alpha 4$  integrin)

## **TEST RESULTS:**

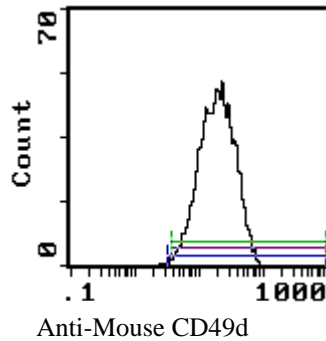
### Tissue Distribution by Flow Cytometry Analysis:

Mouse Strain: BALB/c

Cell Concentration:  $1 \times 10^6$  cells per tests

Antibody Concentration Used:  $0.5 \mu\text{g}/10^6$  cells

<u>Cell Source</u>	<u>Percentage of cells stained above control:</u>
TK1 cell line	99.8%
Thymus	88.6%
Spleen	91.1%
Bone Marrow	82.5%



Cell Source: TK1 cell line

**N.B. Appropriate control samples should always be included in any labeling studies.**

**\* For optimal results in various applications, it is recommended that each investigator determine dilutions appropriate for individual use.**

## **REFERENCES:**

- 1) Berlin, C., E. L. Berg, M. J. Briskin, D. P. Andrew, P. J. Kilshaw, B. Holzmann, I. L. Weissman, A. Hamann, E.C. Butcher 1993.  $\alpha 4\beta 7$  integrin mediates lymphocyte binding to the mucosal vascular addressin MAdCam-1. Cell 704:185-195.
- 2) Holzmann, B., I. L. Weissman 1989. Peyer's patch-specific lymphocyte homing receptors consist of a VLA-4 like  $\alpha$  chain associated with either of two integrin  $\beta$  chains, one of which is novel. EMBO 8:1736-1741.
- 3) Holzmann, B., B. W. McIntyre, I. W. Weissman 1989. Identification of a murine Peyer's patch-specific lymphocyte homing receptor as an integrin molecule with an  $\alpha$  chain homologous to human VLA-4 $\alpha$ . Cell 56:37-46.

**FOR RESEARCH USE ONLY**

® is a Registered Trademark of Cedarlane