



# SZABO SCANDIC

Part of Europa Biosite

## Produktinformation



Forschungsprodukte & Biochemikalien



Zellkultur & Verbrauchsmaterial



Diagnostik & molekulare Diagnostik



Laborgeräte & Service

Weitere Information auf den folgenden Seiten!  
See the following pages for more information!



### Lieferung & Zahlungsart

siehe unsere [Liefer- und Versandbedingungen](#)

### Zuschläge

- Mindermengenzuschlag
- Trockeneiszuschlag
- Gefahrgutzuschlag
- Expressversand

### SZABO-SCANDIC HandelsgmbH

Quellenstraße 110, A-1100 Wien

T. +43(0)1 489 3961-0

F. +43(0)1 489 3961-7

[mail@szabo-scandic.com](mailto:mail@szabo-scandic.com)

[www.szabo-scandic.com](http://www.szabo-scandic.com)

[linkedin.com/company/szaboscandic](https://www.linkedin.com/company/szaboscandic) 

Technically  
Speaking

**CEDARLANE**<sup>®</sup>  
[www.cedarlanelabs.com](http://www.cedarlanelabs.com)



Conveniently Delivering You Today's Innovations  
for the Science of Tomorrow™

**Anti-Mouse CD8a (Ly 2.2)  
Monoclonal Antibody**

Catalogue#	Format	Size	Concentration	Isotype Control
<b>CL8922</b>	Supernatant	1.0ml	NA	CLCMGM00
<b>CL8922A</b>	Ascites	0.5ml	NA	CLCMGM00
<b>CL8922AP</b>	Purified	250µg	1.0 mg/ml	CLCMGM00
<b>CL8922F/-3</b>	FITC	100µg/300µg	0.1 mg/ml	CLCMGM01

Isotype: Mouse IgM

**DESCRIPTION:**

Cedarlane's anti-mouse CD8a (Ly 2.2) monoclonal antibody reacts with a sub-population of T-lymphocytes from mouse strains expressing the Ly-2.2 phenotype but does not react with lymphocytes from strains expressing the Ly-2.1 phenotype.

This clone has been shown to work in both cytotoxicity assays and flow cytometry.

**PRESENTATION:**

**Supernatant and Ascites:** Lyophilized

**Purified:** Purified IgG buffered in PBS and 0.02% NaN<sub>3</sub>. (Purified from ascitic fluid via Protein G Chromatography). For maximum recovery of contents, spin down tube before use.

**FITC:** FITC conjugated IgG buffered in PBS, 0.02% NaN<sub>3</sub> and EIA grade BSA as a stabilizing protein to bring total protein concentration to 4-5 mg/ml.

**STORAGE/STABILITY:**

Store **Supernatant and Ascites** at -20°C. For all other formats, store at 4°C. For long term storage (**Purified** and **FITC**), aliquot and freeze unused portion at -20°C in volumes appropriate for single usage. Avoid freeze/thaw cycles.

**SPECIFICATIONS:**

Clone: AD4(15)

Hybridoma Production:

Immunization: Immunogen: C57BL/6  
Donor: B6-Ly-2a spleen

Fusion Partner: Myeloma P3/X63-Ag8

Specificity: Mouse CD8a (Ly 2.2)

Visit our website for your local distributor.

**CEDARLANE**<sup>®</sup>



[www.cedarlanelabs.com](http://www.cedarlanelabs.com)

An ISO 9001:2000 and ISO 13485:2003  
registered company.

In CANADA: Toll Free: 1-800-268-5058

4410 Paletta Court, Burlington, ON L7L 5R2 ph: (289) 288-0001, fax: (289) 288-0020  
e-mail: [general@cedarlanelabs.com](mailto:general@cedarlanelabs.com)

In the USA: Toll Free: 1-800-721-1644

1210 Turrentine Street, Burlington, NC 27215 ph: (336) 513-5135, fax: (336) 513-5138  
e-mail: [service@cedarlanelabs.com](mailto:service@cedarlanelabs.com)

Strains Tested: C57BL/6, CBA/J, BALB/c, AKR/J, ATL, C3H/He

Positive: C57BL/6, BALB/c, ATL

Negative: CBA/J, AKR/J, C3H/He

### **TEST RESULTS:**

#### Tissue Distribution by Flow Cytometry Analysis:

Mouse Strain: BALB/c

Cell Concentration:  $1 \times 10^6$  cells per tests

Antibody Concentration Used:  $2.0 \mu\text{g}/10^6$  cells

#### Cell Source

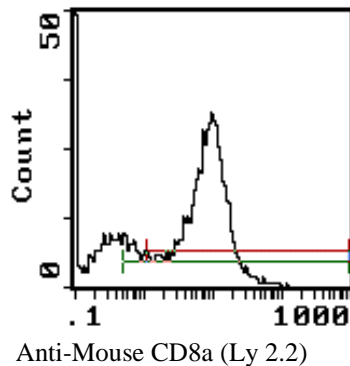
#### Percentage of cells stained above control:

Spleen

10.2%

Thymus

66.0%



Cell Source: Thymus

**N.B. Appropriate control samples should always be included in any labeling studies.**

**\* For optimal results in various applications, it is recommended that each investigator determine dilutions appropriate for individual use.**

### **REFERENCES:**

1. Gottlieb, P.D, Marshak-Rothstein, A., Auditore-Hargreaves, K., Berkoben, D.B., August, D.A., and Rosche, R.M. Construction and properties of New Lyt-Congenic Strains and Anti-Lyt-2.2 and Anti-Lyt-3.1 Monoclonal Antibodies. Immunogenetics 10:545 1980.
2. Raulet, D.H., Gottlieb, P., and Bevan, M.J. Fractionation of Lymphocyte Populations with Monoclonal antibodies Specific for Lyt-2.2 and Lyt-3.1. J. Immunol. 125:1136-1142, 1980.
3. Reilly, E.B., Auditore-Hargreaves, K., Hammerling, U., and Gottlieb, P.D. Lyt-2 and Lyt-3 Alloantigens: Precipitation with Monoclonal and Conventional Antibodies and Analysis on one and two-dimensional Polyacrylamide Gels. J. Immunol. 125:2245-2251, 1980.

**FOR RESEARCH USE ONLY**

® is a Registered Trademark of Cedarlane