



# SZABO SCANDIC

Part of Europa Biosite

## Produktinformation



Forschungsprodukte & Biochemikalien



Zellkultur & Verbrauchsmaterial



Diagnostik & molekulare Diagnostik



Laborgeräte & Service

Weitere Information auf den folgenden Seiten!  
See the following pages for more information!



### Lieferung & Zahlungsart

siehe unsere [Liefer- und Versandbedingungen](#)

### Zuschläge

- Mindermengenzuschlag
- Trockeneiszuschlag
- Gefahrgutzuschlag
- Expressversand

### SZABO-SCANDIC HandelsgmbH

Quellenstraße 110, A-1100 Wien

T. +43(0)1 489 3961-0

F. +43(0)1 489 3961-7

[mail@szabo-scandic.com](mailto:mail@szabo-scandic.com)

[www.szabo-scandic.com](http://www.szabo-scandic.com)

[linkedin.com/company/szaboscandic](https://www.linkedin.com/company/szaboscandic) 

Technically  
Speaking

**CEDARLANE**<sup>®</sup>  
[www.cedarlanelabs.com](http://www.cedarlanelabs.com)



Conveniently Delivering You Today's Innovations  
for the Science of Tomorrow™

**Anti-Mouse CD25 (IL-2R)  
Monoclonal Antibody**

Catalogue#	Format	Size	Concentration	Isotype Control
CL8925A	Ascites	0.5 ml	N/A	CLCR100
CL8925AP	Purified	250 µg	1.0 mg/ml	CLCR100
CL8925LE	Purified/Low Endotoxin	500 µg	1.0 mg/ml	CLCR100
CL8925NA	Purified/No Azide	1 mg	1.0 mg/ml	CLCR100
CL8925APC	APC	100 µg	0.1 mg/ml	CLCR105
CL8925B	Biotin	100 µg	0.1 mg/ml	CLCR115
CL8925B-3	Biotin	300 µg	0.1 mg/ml	CLCR115
CL8925F	FITC	100 µg	0.1 mg/ml	CLCR101
CL8925F-3	FITC	300 µg	0.1 mg/ml	CLCR101
CL8925PE	PE	50 µg	0.1 mg/ml	CLCR104
CL8925PE-3	PE	300 µg	0.1 mg/ml	CLCR104
CL8925AF4	Alexa Fluor <sup>®</sup> 488	100 µg	0.1 mg/ml	N/A

Alexa Fluor<sup>®</sup> is a registered trademark of Life Technologies Corporation.

Isotype: Rat IgG<sub>1</sub>

**DESCRIPTION:**

Cedarlane's anti-mouse CD25 (IL-2R) monoclonal antibody reacts with the low affinity alpha chain of the interleukin-2 receptor antigen present on activated T and B cells in mice. CL8925NA inhibits IL-2 binding and IL-2 dependent proliferation. Applications include flow cytometry and immunoprecipitation. (1,2,3). This clone has also been referenced to work in immunohistochemistry (4).

**PRESENTATION:**

**Purified:** Purified IgG buffered in PBS and 0.02% NaN<sub>3</sub>. (Purified from ascitic fluid via Protein G Chromatography). For maximum recovery of contents, spin down tube before use.

**LE:** No preservative added. 0.2µm sterile filtered.

**Biotin, FITC, PE, APC and AF488:** Biotin/FITC/PE/APC/AF488 conjugated IgG buffered in PBS, 0.02% NaN<sub>3</sub> and EIA grade BSA as a stabilizing protein to bring total protein concentration to 4-5 mg/ml.

**No Azide:** Purified Ig buffered in PBS, no preservative, 0.2µm sterile filtered.

**STORAGE/STABILITY:**

For all formats, store at 4°C. DO NOT FREEZE PE, APC and AF488 conjugates. For long term storage (Purified, Biotin, FITC, No Azide, LE), aliquot and freeze unused portion at -20°C in volumes appropriate for single usage. Avoid freeze/thaw cycles.

Visit our website for your local distributor.

**CEDARLANE**<sup>®</sup>



[www.cedarlanelabs.com](http://www.cedarlanelabs.com)

An ISO 9001:2000 and ISO 13485:2003  
registered company.

In CANADA: Toll Free: 1-800-268-5058

4410 Paletta Court, Burlington, ON L7L 5R2 ph: (289) 288-0001, fax: (289) 288-0020  
e-mail: [general@cedarlanelabs.com](mailto:general@cedarlanelabs.com)

In the USA: Toll Free: 1-800-721-1644

1210 Turrentine Street, Burlington, NC 27215 ph: (336) 513-5135, fax: (336) 513-5138  
e-mail: [service@cedarlanelabs.com](mailto:service@cedarlanelabs.com)

## **SPECIFICATIONS:**

Clone: PC61.5.3

### Hybridoma Production:

Immunization: Immunogen: B6.1 CTL Cell line  
Donor: OFA rat spleen  
Fusion Partner: Mouse myeloma line P3X63Ag8.

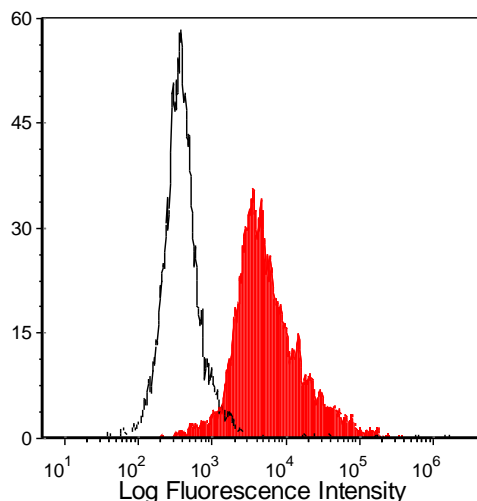
Specificity: Mouse CD25 (IL-2 receptor,  $\alpha$  chain)

## **TEST RESULTS:**

### Tissue Distribution by Flow Cytometry Analysis:

Mouse Strain: BALB/c  
Cell Concentration:  $1 \times 10^6$  cells per tests  
Antibody Concentration Used: 0.2-0.5  $\mu\text{g}/10^6$  cells

Percentage of cells stained above control: 96.5%



Con A-stimulated (3 days) C57/BL6 splenocytes were stained with anti-CD25 (clone: PC61.5.3) (filled histogram) or rat IgG1 isotype control (open histogram).

**N.B. Appropriate control samples should always be included in any labeling studies.**

**\* For optimal results in various applications, it is recommended that each investigator determine dilutions appropriate for individual use.**

## **REFERENCES:**

- 1) Moreau J. L., Nabholz M, Diamantstein T., Malek T., Shevach E., Thèze, J. (1987). Monoclonal antibodies identify three epitope clusters on the mouse p55 subunit of the interleukin 2 receptor: relationship to the interleukin 2 binding site. *European J. Immunol.* 17, 1835-1838.
- 2) Hashimoto N, Nabholz M, MacDonald HR, Zubler RH (1986). Dissociation of interleukin 2 dependent and independent B cell proliferation with monoclonal anti-interleukin 2 receptor antibody. *European J. Immunol.* 16, 317-320.
- 3) Lowenthal JW, Corthésy P, Tougne C, Lees R, MacDonald HR, Nabholz M (1985). High and low affinity IL-2 receptors: Analysis by IL-2 dissociation rate and reactivity with monoclonal anti-receptor antibody PC61. *J. Immunol.* 135: 3988-3994.
- 4) Ceredig R, Lowenthal J.W., Nabholz M., Macdonald H.R. (1985) Expression of interleukin-2 receptor as a differentiation marker on intrathymic stem cells. *Nature.* 314: 98-100.

**FOR RESEARCH USE ONLY**

® is a registered trademark of Cedarlane Laboratories Ltd.