



SZABO SCANDIC

Part of Europa Biosite

Produktinformation



Forschungsprodukte & Biochemikalien



Zellkultur & Verbrauchsmaterial



Diagnostik & molekulare Diagnostik



Laborgeräte & Service

Weitere Information auf den folgenden Seiten!
See the following pages for more information!



Lieferung & Zahlungsart

siehe unsere [Liefer- und Versandbedingungen](#)

Zuschläge

- Mindermengenzuschlag
- Trockeneiszuschlag
- Gefahrgutzuschlag
- Expressversand

SZABO-SCANDIC HandelsgmbH

Quellenstraße 110, A-1100 Wien

T. +43(0)1 489 3961-0

F. +43(0)1 489 3961-7

mail@szabo-scandic.com

www.szabo-scandic.com

[linkedin.com/company/szaboscandic](https://www.linkedin.com/company/szaboscandic) 

Technically
Speaking

CEDARLANE[®] 
www.cedarlanelabs.com

Conveniently Delivering You Today's Innovations
for the Science of Tomorrow™

**Anti-Mouse CD34
Monoclonal Antibody**

Catalogue#	Format	Size	Concentration	Isotype Control
CL8927A	Ascites	0.5ml	NA	CLCR2A00
CL8927AP	Purified	250µg	1.0 mg/ml	CLCR2A00
CL8927AP-2	Purified	500µg	1.0 mg/ml	CLCR2A00
CL8927B	Biotin	100µg	0.1 mg/ml	CLCR2A15
CL8927B-3	Biotin	300µg	0.1 mg/ml	CLCR2A15
CL8927F	FITC	100µg	0.1 mg/ml	CLCR2A01
CL8927F-3	FITC	300µg	0.1 mg/ml	CLCR2A01
CL8927NA	Purified No Azide	1.0mg	1.0mg/ml	CLCR2A00
CL8927PE	PE	50µg	0.1 mg/ml	CLCR2A04
CL8927PE-3	PE	300µg	0.1 mg/ml	CLCR2A04
CL8927AF4	Alexa Fluor [®] 488	100 µg	0.1 mg/ml	N/A

Alexa Fluor[®] is a registered trademark of Life Technologies Corporation.

Ig Class: Rat IgG_{2a}

DESCRIPTION:

Cedarlane's anti mouse CD34 reacts with Mouse CD34, a protein present on endothelial cells and hematopoietic progenitor cells. The antibody recognizes a neuraminidase sensitive epitope on endothelium *in vivo*, particularly on small vessels and neoformed capillaries and developing vascular structures in embryonal structures.

The antibody reacts with hematopoietic progenitors particularly of myelomonocytic colony forming cells. It is a useful reagent for identification and characterization of capillary endothelial cells. Furthermore the antibody can be used for isolation and characterization of hematopoietic progenitor cells.

This clone is suitable for use in ELISA, immunofluorescence, immunohistochemistry on frozen and paraffin sections, Western Blot, immunoprecipitation, flow cytometry and cell separation.

PRESENTATION:

Ascites: 0.5ml Lyophilized.

Purified: Purified IgG buffered in PBS and 0.02% NaN₃. (Purified from ascitic fluid via Protein G Chromatography). For maximal recovery of contents, please quick-spin vial before opening.

Biotin, FITC, PE and AF488: Biotin/FITC/PE/AF488 conjugated IgG buffered in PBS, 0.02% NaN₃ and EIA grade BSA as a stabilizing protein to bring total protein concentration to 4-5 mg/ml.

No Azide: Purified Ig buffered in PBS, no preservative, 0.2µm sterile filtered.

Visit our website for your local distributor.

CEDARLANE[®] 

www.cedarlanelabs.com

An ISO 9001:2000 and ISO 13485:2003
registered company.

In CANADA: **Toll Free: 1-800-268-5058**

4410 Paletta Court, Burlington, ON L7L 5R2 ph: (289) 288-0001, fax: (289) 288-0020
e-mail: general@cedarlanelabs.com

In the USA: **Toll Free: 1-800-721-1644**

1210 Turrentine Street, Burlington, NC 27215 ph: (336) 513-5135, fax: (336) 513-5138
e-mail: service@cedarlanelabs.com

STORAGE/STABILITY:

For all formats, store at 4°C. DO NOT FREEZE PE and AF488 conjugates. For long term storage (Ascites, Purified, Biotin, FITC and NA), aliquot and freeze unused portion at -20°C in volumes appropriate for single usage. Avoid freeze/thaw cycles.

SPECIFICATIONS:

Clone: MEC 14.7

Immunogen: murine transformed endothelioma cell line t-end.

Specificity: Mouse CD34

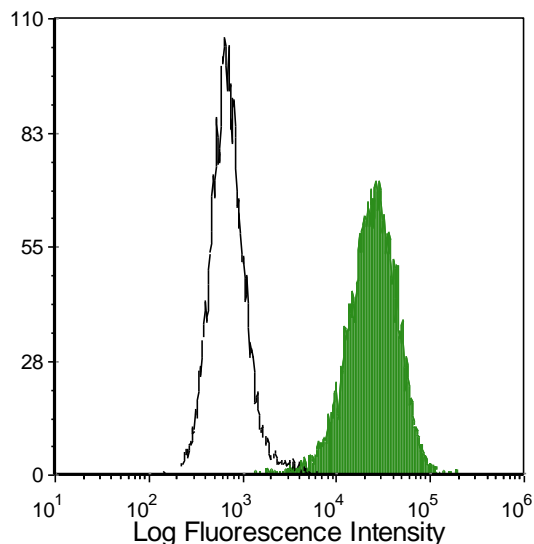
TEST RESULTS:

Tissue Distribution by Flow Cytometry Analysis:

Cell Concentration: 1×10^6 cells per test

Antibody Concentration Used: 0.5 $\mu\text{g}/10^6$ cells

<u>Cell Source</u>	<u>Percentage of cell stained above control:</u>
H5V Cell Line	98%
BM	6.9%



The mouse heart endothelial (H5V) cell line was stained with anti-CD34 (clone: MEC14.7) (filled histogram) or rat IgG2a isotype control (open histogram).

N.B. Appropriate control samples should always be included in any labeling studies.

*** For optimal results in various applications, it is recommended that each investigator determine dilutions appropriate for individual use.**

REFERENCES:

1. Garlanda *et al.* *Eur. J. of Cell Biology.* **73**:368-377, 1997.
2. Solberg, H. *et al.* *J. of Histochem. and Cytochem.* **49**: 237-246, 2001.
3. Solberg, H. *et al.* *Development.* **130**:4439-4450, 2003.
4. Zilocchi, C. *et al.* *J. Exp. Med.* **188**: 133-143, 1998.
5. Lin, G., *et al.* *Eur. J. Immunol.* **25**:1508-1516, 1995.
6. Voswinckel, R., *et al.* *Circ. Res.* **93**:372-279, 2003.
7. Ishii, G., *et al.* *Stem Cells.* **23**:699-706, 2005.
8. Kairaitis, L.K., *et al.* *Am. J. Physiol Reanl Physiol*, **288**: F198-F206, 2005
9. Zheng, Y., *et al.* *J. Invest. Dermatol.* **1-10**, 2005.

FOR RESEARCH USE ONLY

® is a registered trademark of Cedarlane