



# SZABO SCANDIC

Part of Europa Biosite

## Produktinformation



Forschungsprodukte & Biochemikalien



Zellkultur & Verbrauchsmaterial



Diagnostik & molekulare Diagnostik



Laborgeräte & Service

Weitere Information auf den folgenden Seiten!  
See the following pages for more information!



### Lieferung & Zahlungsart

siehe unsere [Liefer- und Versandbedingungen](#)

### Zuschläge

- Mindermengenzuschlag
- Trockeneiszuschlag
- Gefahrgutzuschlag
- Expressversand

### SZABO-SCANDIC HandelsgmbH

Quellenstraße 110, A-1100 Wien

T. +43(0)1 489 3961-0

F. +43(0)1 489 3961-7

[mail@szabo-scandic.com](mailto:mail@szabo-scandic.com)

[www.szabo-scandic.com](http://www.szabo-scandic.com)

[linkedin.com/company/szaboscandic](https://www.linkedin.com/company/szaboscandic) 

Technically  
Speaking

**CEDARLANE**<sup>®</sup>  
[www.cedarlanelabs.com](http://www.cedarlanelabs.com)



Conveniently Delivering You Today's Innovations  
for the Science of Tomorrow™

**Anti-Mouse CD8  $\beta$  Chain (Ly 3)  
Monoclonal Antibody**

Catalogue#	Format	Size	Concentration	Isotype Control
CL8938AP	Purified	200 $\mu$ g	1.0 mg/ml	CLCR2A00
CL8938APC	APC	100 $\mu$ g	0.1 mg/ml	CLCR2A05
CL8938B	Biotin	100 $\mu$ g	0.1 mg/ml	CLCR2A15
CL8938B-3	Biotin	300 $\mu$ g	0.1 mg/ml	CLCR2A15
CL8938F	FITC	100 $\mu$ g	0.1 mg/ml	CLCR2A01
CL8938F-3	FITC	300 $\mu$ g	0.1 mg/ml	CLCR2A01
CL8938PE	PE	50 $\mu$ g	0.1 mg/ml	CLCR2A04
CL8938PE-3	PE	300 $\mu$ g	0.1 mg/ml	CLCR2A04
CL8938TC	TC	100 $\mu$ g	0.1 mg/ml	CLCR2A06

Isotype: Rat IgG2a

**DESCRIPTION:**

Cedarlane's anti-mouse CD8  $\beta$ -Chain monoclonal antibody is specific for most thymocytes, cytotoxic/suppressor T-cells and their precursors. The CD8  $\beta$ -Chain is also named Ly-3. This antibody is suitable for use in flow cytometry.

**PRESENTATION:**

**Purified:** Purified IgG buffered in PBS and 0.02% NaN<sub>3</sub>. (Purified from ascitic fluid via Protein G Chromatography). For maximal recovery of contents, please quick-spin vial before opening.

**Biotin, FITC, PE, and APC:** Biotin/FITC/PE/APC conjugated IgG buffered in PBS, 0.02% NaN<sub>3</sub> and EIA grade BSA as a stabilizing protein to bring total protein concentration to 4-5 mg/mL.

**STORAGE/STABILITY:**

For all formats, store at 4°C. DO NOT FREEZE **PE and APC** conjugates. For long term storage (**Purified, Biotin, FITC**), aliquot and freeze unused portion at -20°C in volumes appropriate for single usage. Avoid freeze/thaw cycles.

**SPECIFICATIONS:**

Clone: CT-CD8b

Visit our website for your local distributor.

**CEDARLANE**<sup>®</sup>



[www.cedarlanelabs.com](http://www.cedarlanelabs.com)

An ISO 9001:2000 and ISO 13485:2003  
registered company.

In CANADA: Toll Free: 1-800-268-5058

4410 Paletta Court, Burlington, ON L7L 5R2 ph: (289) 288-0001, fax: (289) 288-0020  
e-mail: [general@cedarlanelabs.com](mailto:general@cedarlanelabs.com)

In the USA: Toll Free: 1-800-721-1644

1210 Turrentine Street, Burlington, NC 27215 ph: (336) 513-5135, fax: (336) 513-5138  
e-mail: [service@cedarlanelabs.com](mailto:service@cedarlanelabs.com)

Hybridoma Production:

Immunization:  
Immunogen: Mouse CD8  $\beta$   
Donor: Mouse ascites fluid

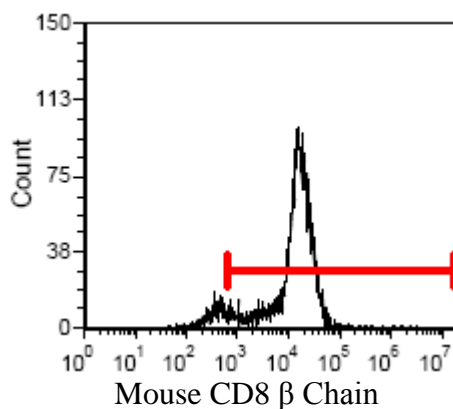
Specificity: Mouse CD8  $\beta$  chain

**TEST RESULTS:**

Tissue Distribution by Flow Cytometry Analysis:

Mouse Strain: Balb/c  
Cell Concentration:  $1 \times 10^6$  cells per tests  
Antibody Concentration Used:  $0.1 \mu\text{g}/10^6$  cells

<u>Cell Source</u>	<u>Percentage of cells stained above control:</u>
Thymus	91.3
Spleen	22.4



**N.B.** Appropriate control samples should always be included in any labeling studies.

**\* For optimal results in various applications, it is recommended that each investigator determine dilutions appropriate for individual use.**

**REFERENCES:**

1. Ledbetter, J. and Herzenberg, L. 1979 Xenogenic monoclonal antibodies to mouse lymphoid differentiation antigens. Immunol. Rev. 47:63-90.
2. Ledbetter, J., Rouse, R., Micklem, S. and Herzenberg, L. 1980 T cell subsets defined by expression of Lyt-1,2,3 and Thy-1 antigens. J. Exp. Med. 152:280-295.
3. Tomomari, K. and Spencer, S. 1990 Epitope-specific binding of CD8 regulates activation of T cells and induction of cytotoxicity. International Immunol. 2(12):1189-1194.

**FOR RESEARCH USE ONLY**

® is a registered trademark of Cedarlane Laboratories Ltd.