



SZABO SCANDIC

Part of Europa Biosite

Produktinformation



Forschungsprodukte & Biochemikalien



Zellkultur & Verbrauchsmaterial



Diagnostik & molekulare Diagnostik



Laborgeräte & Service

Weitere Information auf den folgenden Seiten!
See the following pages for more information!



Lieferung & Zahlungsart

siehe unsere [Liefer- und Versandbedingungen](#)

Zuschläge

- Mindermengenzuschlag
- Trockeneiszuschlag
- Gefahrgutzuschlag
- Expressversand

SZABO-SCANDIC HandelsgmbH

Quellenstraße 110, A-1100 Wien

T. +43(0)1 489 3961-0

F. +43(0)1 489 3961-7

mail@szabo-scandic.com

www.szabo-scandic.com

[linkedin.com/company/szaboscandic](https://www.linkedin.com/company/szaboscandic) 

Technically
Speaking

CEDARLANE[®] 
www.cedarlanelabs.com

Conveniently Delivering You Today's Innovations
for the Science of Tomorrow™

**Anti-Mouse CD40
Monoclonal Antibody**

Catalogue#	Format	Size	Concentration	Isotype Control
CL8939AP	Purified	250 µg	1.0 mg/ml	CLCR2A00
CL8939B/-3	Biotin	100 µg/300 µg	0.1 mg/ml	CLCR2A15
CL8939PE/-3	PE	50 µg/300 µg	0.1 mg/ml	CLCR2A04

Ig Class: Rat IgG_{2a}

DESCRIPTION:

Cedarlane's anti-mouse monoclonal antibody reacts with a 45-48kDa protein found on peripheral B cells. It is also found on the surface of most B cell leukemias, lymphomas and carcinomas. CD40 is involved in the activation, proliferation and differentiation of B cells.

This antibody is suitable for use in flow cytometry.

PRESENTATION:

Purified: Purified IgG buffered in PBS and 0.02% NaN₃. (Purified from ascitic fluid via Protein G Chromatography). For maximum recovery of contents, spin down tube before use.

Biotin and PE: Biotin/PE conjugated IgG buffered in PBS, 0.02% NaN₃ and EIA grade BSA as a stabilizing protein to bring total protein concentration to 4-5 mg/mL.

STORAGE/STABILITY:

For all formats, store at 4°C. DO NOT FREEZE **PE**. For long term storage (**Purified and Biotin**), aliquot and freeze unused portion at -20°C in volumes appropriate for single usage. Avoid freeze/thaw cycles.

SPECIFICATIONS:

Clone: 3/23

Specificity: Mouse CD40

Visit our website for your local distributor.

CEDARLANE[®] 

www.cedarlanelabs.com

An ISO 9001:2000 and ISO 13485:2003
registered company.

In CANADA: Toll Free: 1-800-268-5058

4410 Paletta Court, Burlington, ON L7L 5R2 ph: (289) 288-0001, fax: (289) 288-0020
e-mail: general@cedarlanelabs.com

In the USA: Toll Free: 1-800-721-1644

1210 Turrentine Street, Burlington, NC 27215 ph: (336) 513-5135, fax: (336) 513-5138
e-mail: service@cedarlanelabs.com

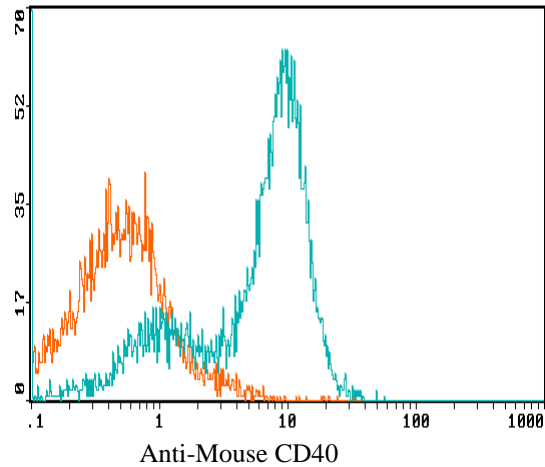
TEST RESULTS:

Tissue Distribution by Flow Cytometry Analysis:

Mouse Strain: C57BL/6

Cell Concentration: 1×10^6 cells per test

Antibody Concentration Used: $0.5 \mu\text{g}/10^6$ cells



Cell Source: Spleen

Percentage of cells stained above control: 54.9%

N.B. Appropriate control samples should always be included in any labeling studies.

*** For optimal results in various applications, it is recommended that each investigator determine dilutions appropriate for individual use.**

REFERENCES:

1. Parry, S.L., Holman, M., Hasbold, M., Hasbold, J., and Klaus, G.G.B. (1994). Eur. J. Immunol. 24:974-979.
2. Hasbold, J., and Klaus, G.G.B. (1994) Eur. J. Immunol. 24:152-157.

FOR RESEARCH USE ONLY

® is a registered trademark of Cedarlane