



SZABO SCANDIC

Part of Europa Biosite

Produktinformation



Forschungsprodukte & Biochemikalien



Zellkultur & Verbrauchsmaterial



Diagnostik & molekulare Diagnostik



Laborgeräte & Service

Weitere Information auf den folgenden Seiten!
See the following pages for more information!



Lieferung & Zahlungsart

siehe unsere [Liefer- und Versandbedingungen](#)

Zuschläge

- Mindermengenzuschlag
- Trockeneiszuschlag
- Gefahrgutzuschlag
- Expressversand

SZABO-SCANDIC HandelsgmbH

Quellenstraße 110, A-1100 Wien

T. +43(0)1 489 3961-0

F. +43(0)1 489 3961-7

mail@szabo-scandic.com

www.szabo-scandic.com

[linkedin.com/company/szaboscandic](https://www.linkedin.com/company/szaboscandic) 

TECHNICALLY *Speaking*

Place your order with CEDARLANE® or your local distributor.

Please contact CEDARLANE® for lot specific information.

APC Anti-Mouse CD45 Monoclonal Antibody

CL8945APC

LOT:

DESCRIPTION:

Cedarlane's anti-mouse CD45 monoclonal antibody reacts with the CD45 leukocyte common antigen (LCA) found on all cells of hematopoietic origin, except erythrocytes.

This antibody is suitable for use in flow cytometry.

PRESENTATION:

100 µg (CL8945APC) APC conjugated Ig buffered in PBS, 0.1% Sodium Azide (NaN₃) and EIA grade BSA as a stabilizing protein to bring total protein concentration to 4-5 mg/ml.

STORAGE/STABILITY:

Store at 4°C. DO NOT FREEZE. Avoid prolonged exposure to light. If the reagent is being diluted, it is recommended that only the quantity to be used within one week be diluted. Check label for expiry date.

For more information or to place an order please contact...

CEDARLANE®
LABORATORIES LIMITED



toll free: 1-800-268-5058
in North America

phone: (905) 878-8891 • fax: (905) 878-7800

5516 - 8th Line, R.R.#2, Hornby, Ontario, CANADA L0P 1E0

or visit our website for a list of our international distributors including contact information

website: www.cedarlanelabs.com • e-mail: info@cedarlanelabs.com

SPECIFICATIONS:

Clone: YW62.3

Specificity: Mouse CD45

Ig Class: Rat IgG_{2b}

Antibody Concentration: 0.2 mg/ml

FLOW CYTOMETRY ANALYSIS:

Method:

1. Prepare a cell suspension in media A. For cell preparations, deplete the red blood cell population with Lympholyte[®]-M cell separation medium (CL5030).
2. Wash 2 times.
3. Resuspend the cells to a concentration of 2×10^7 cells/ml in media A. Add 50 μ l of this suspension to each tube (each tube will then contain 1×10^6 cells, representing 1 test).
4. To each tube, add $\sim 1.0 \mu\text{g}^*$ of **CL8945APC** per 10^6 cells.
5. Vortex the tubes to ensure thorough mixing of antibody and cells.
6. Incubate the tubes for 30 minutes at 4°C.
(It is recommended that the tubes are protected from light, since most fluorochromes are light sensitive.)
7. Wash 2 times at 4°C.
8. Resuspend the cell pellet in 50 μ l ice cold media B.
9. Transfer to suitable tubes for flow cytometric analysis containing 15 μ l of propidium iodide at 0.5 mg/ml in PBS. This stains dead cells by intercalating in DNA.

Media:

- A. Phosphate buffered saline (pH 7.2) + 5% normal serum of host species + sodium azide (100 μ l of 2M sodium azide in 100 mls).
- B. Phosphate buffered saline (pH 7.2) + 0.5% Bovine serum albumin + sodium azide (100 μ l of 2M sodium azide in 100 mls).

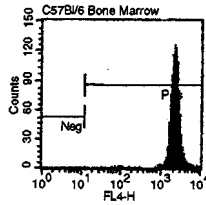
Results:Tissue Distribution by Flow Cytometry Analysis:

Mouse Strain: C57BL/6

Cell Concentration : 1×10^6 cells per test

Antibody Concentration Used: 1.0 μ g/ 10^6 cells

Isotypic Control: APC Rat IgG_{2b} (CLCR2B05)



LFL 4

Cell Source: Bone Marrow

N.B. Appropriate control samples should always be included in any labelling studies.

*** For optimal results in various applications, it is recommended that each investigator determine dilutions appropriate for individual use.**

REFERENCES:

1. Watt, S.M., Gilmore, D.J., Davis, J.M., Clark, M.R. & Waldmann, H. (1987). Cell surface markers on haemopoietic precursors. Reagents for the isolation and analysis of progenitor cell subpopulations. *Mol. Cell. Probes* **1**:297-326.
2. Bindon, C.I., Hale, G. & Waldmann, H. (1988) Importance of antigen specificity for complement-mediated lysis by monoclonal antibodies. *Eur. J. Immunol.* **18**:1507-1514.

FOR RESEARCH USE ONLY

® is a Registered Trademark of Cedarlane Laboratories Limited.