



# SZABO SCANDIC

Part of Europa Biosite

## Produktinformation



Forschungsprodukte & Biochemikalien



Zellkultur & Verbrauchsmaterial



Diagnostik & molekulare Diagnostik



Laborgeräte & Service

Weitere Information auf den folgenden Seiten!  
See the following pages for more information!



### Lieferung & Zahlungsart

siehe unsere [Liefer- und Versandbedingungen](#)

### Zuschläge

- Mindermengenzuschlag
- Trockeneiszuschlag
- Gefahrgutzuschlag
- Expressversand

### SZABO-SCANDIC HandelsgmbH

Quellenstraße 110, A-1100 Wien

T. +43(0)1 489 3961-0

F. +43(0)1 489 3961-7

[mail@szabo-scandic.com](mailto:mail@szabo-scandic.com)

[www.szabo-scandic.com](http://www.szabo-scandic.com)

[linkedin.com/company/szaboscandic](https://www.linkedin.com/company/szaboscandic) 

Technically  
Speaking

**CEDARLANE**<sup>®</sup>  
[www.cedarlanelabs.com](http://www.cedarlanelabs.com)



Conveniently Delivering You Today's Innovations  
for the Science of Tomorrow™

**Anti-Mouse CD44  
Monoclonal Antibody**

Catalogue#	Format	Size	Concentration	Isotype Control
<b>CL8946AP</b>	Purified	200 µg	1.0 mg/ml	CLCR2B00
<b>CL8946B/-3</b>	Biotin	100 µg/300 µg	0.1 mg/ml	CLCR2B15
<b>CL8946F/-3</b>	FITC	100 µg/300 µg	0.1 mg/ml	CLCR2B01
<b>CL8946PE/-3</b>	PE	50 µg/300 µg	0.1 mg/ml	CLCR2B04

Isotype: Rat IgG<sub>2b</sub>

**DESCRIPTION:**

Cedarlane's anti-mouse CD44 monoclonal antibody reacts with all isoforms of CD44 (Pgp-1, Ly-24) glycoprotein. By flow cytometry, the main cellular reactivities are B cells, monocytes, macrophages and variable subsets of thymocytes and peripheral T cells.

This antibody is suitable for use in flow cytometry. This clone is also reported to work in immunoprecipitation, ELISA, IHC with paraffin (2.5-10 µg/ml) and frozen sections, and complement depletion<sup>1,2,3</sup>.

**PRESENTATION:**

**Purified:** Purified IgG buffered in PBS and 0.02% NaN<sub>3</sub>. (Purified from ascitic fluid via Protein G Chromatography). For maximum recovery of contents, spin down tube before use.

**Biotin FITC and PE:** Biotin/FITC/PE conjugated IgG buffered in PBS, 0.02% NaN<sub>3</sub> and EIA grade BSA as a stabilizing protein to bring total protein concentration to 4-5 mg/mL.

**STORAGE/STABILITY:**

For all formats, store at 4°C. **DO NOT FREEZE PE.** For long term storage (**Purified, Biotin and FITC**), aliquot and freeze unused portion at -20°C in volumes appropriate for single usage. Avoid freeze/thaw cycles.

**SPECIFICATIONS:**

Clone: IM7.8.1

Immunogen: Myeloid leukemia M1 cells induced with Dexamethasone.

Specificity: Mouse CD44

Visit our website for your local distributor.

**CEDARLANE**<sup>®</sup>



[www.cedarlanelabs.com](http://www.cedarlanelabs.com)

An ISO 9001:2000 and ISO 13485:2003  
registered company.

**In CANADA: Toll Free: 1-800-268-5058**

4410 Paletta Court, Burlington, ON L7L 5R2 ph: (289) 288-0001, fax: (289) 288-0020  
e-mail: [general@cedarlanelabs.com](mailto:general@cedarlanelabs.com)

**In the USA: Toll Free: 1-800-721-1644**

1210 Turrentine Street, Burlington, NC 27215 ph: (336) 513-5135, fax: (336) 513-5138  
e-mail: [service@cedarlanelabs.com](mailto:service@cedarlanelabs.com)

## **TEST RESULTS:**

### Tissue Distribution by Flow Cytometry Analysis:

Mouse Strain: BALB/c

Cell Concentration:  $1 \times 10^6$  cells per test

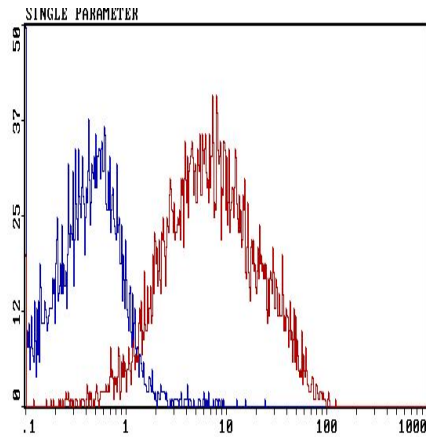
Antibody Concentration Used:  $0.5 \mu\text{g}/10^6$  cells

### Cell Source:

Spleen  
Thymus

### Percentage of cells stained above control:

87%  
20.9%



Cell Source: Spleen

**N.B. Appropriate control samples should always be included in any labeling studies.**

**\* For optimal results in various applications, it is recommended that each investigator determine dilutions appropriate for individual use.**

## **REFERENCES:**

1. Lesley, J. and Trowbridge, I.S. 1982 Genetic characterization of a polymorphic murine cell-surface glycoprotein. *Immunogenetics* 15:313-320.
2. Lesley, J., Hyman, R. and Kincade, P.W. 1993 CD44 and its interaction with extracellular matrix. *Advances in Immunol.* 54:271-335.
3. Katoh, S., J.B. McCarthy, and P.W. Kincade. 1994. Characterization of soluble CD44 in the circulation of mice. Levels are affected by immune activity and tumor growth. *J.Immunol.* 153:3440-3449.

**FOR RESEARCH USE ONLY**