



# SZABO SCANDIC

Part of Europa Biosite

## Produktinformation



Forschungsprodukte & Biochemikalien



Zellkultur & Verbrauchsmaterial



Diagnostik & molekulare Diagnostik



Laborgeräte & Service

Weitere Information auf den folgenden Seiten!  
See the following pages for more information!



### Lieferung & Zahlungsart

siehe unsere [Liefer- und Versandbedingungen](#)

### Zuschläge

- Mindermengenzuschlag
- Trockeneiszuschlag
- Gefahrgutzuschlag
- Expressversand

### SZABO-SCANDIC HandelsgmbH

Quellenstraße 110, A-1100 Wien

T. +43(0)1 489 3961-0

F. +43(0)1 489 3961-7

[mail@szabo-scandic.com](mailto:mail@szabo-scandic.com)

[www.szabo-scandic.com](http://www.szabo-scandic.com)

[linkedin.com/company/szaboscandic](https://www.linkedin.com/company/szaboscandic) 

Technically  
Speaking

**CEDARLANE**<sup>®</sup>  
[www.cedarlanelabs.com](http://www.cedarlanelabs.com)



Conveniently Delivering You Today's Innovations  
for the Science of Tomorrow™

**Anti-Mouse CD44  
Monoclonal Antibody**

Catalogue#	Format	Size	Concentration
<b>CL8946AP</b>	Purified	200 µg	1.0 mg/ml
<b>CL8946B</b>	Biotin	100 µg	0.1 mg/ml
<b>CL8946B-3</b>	Biotin	300 µg	0.1 mg/ml
<b>CL8946F</b>	FITC	100 µg	0.1 mg/ml
<b>CL8946F-3</b>	FITC	300 µg	0.1 mg/ml
<b>CL8946PE</b>	PE	50 µg	0.1 mg/ml
<b>CL8946PE-3</b>	PE	300 µg	0.1 mg/ml

Isotype: Rat IgG<sub>2b</sub>

**DESCRIPTION:**

Cedarlane's anti-mouse CD44 monoclonal antibody reacts with all isoforms of CD44 (Pgp-1, Ly-24) glycoprotein. By flow cytometry, the main cellular reactivities are B cells, monocytes, macrophages and variable subsets of thymocytes and peripheral T cells.

This antibody is suitable for use in flow cytometry.

CL8946AP is reported to work well in immunohistochemistry (both paraffin (2.5-10ug/ml) and frozen sections). CL8946PE and CL8946PE-3 are reported to work in immunoprecipitation, ELISA, IHC of frozen sections, and complement depletion<sup>1,2,3</sup>.

**PRESENTATION:**

**Purified:** 22 µg purified Ig buffered in PBS and 0.02% NaN<sub>3</sub>.

**Biotin and FITC:** 100 µg or 300 µg Biotin/FITC conjugated Ig buffered in PBS, 0.02% NaN<sub>3</sub> and EIA grade BSA as a stabilizing protein to bring total protein concentration to 4-5 mg/ml.

**PE:** 50 µg or 300 µg R-PE conjugated Ig buffered in PBS, 0.2% NaN<sub>3</sub> and EIA grade BSA as a stabilizing protein to bring total protein concentration to 4-5 mg/ml.

**STORAGE/STABILITY:**

Store at 4°C. Avoid prolonged exposure to light. DO NOT FREEZE **PE** conjugates. For long term storage (**PURIFIED, BIOTIN, FITC**), aliquot and freeze unused portion at -20°C in volumes appropriate for single usage. Avoid freeze/thaw cycles. If the reagent is being diluted, it is recommended that only the quantity to be used within one week be diluted. Check label for expiry date.

Visit our website for your local distributor.

**CEDARLANE**<sup>®</sup>



[www.cedarlanelabs.com](http://www.cedarlanelabs.com)

An ISO 9001:2000 and ISO 13485:2003  
registered company.

In CANADA: Toll Free: 1-800-268-5058

4410 Paletta Court, Burlington, ON L7L 5R2 ph: (289) 288-0001, fax: (289) 288-0020  
e-mail: [general@cedarlanelabs.com](mailto:general@cedarlanelabs.com)

In the USA: Toll Free: 1-800-721-1644

1210 Turrentine Street, Burlington, NC 27215 ph: (336) 513-5135, fax: (336) 513-5138  
e-mail: [service@cedarlanelabs.com](mailto:service@cedarlanelabs.com)

## **SPECIFICATIONS:**

Clone: IM7.8.1

Specificity: Mouse CD44

## **TEST RESULTS:**

### Tissue Distribution by Flow Cytometry Analysis:

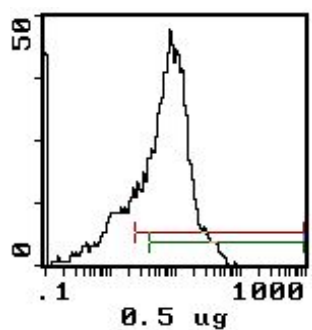
Mouse Strain: BALB/c

Cell Concentration :  $1 \times 10^6$  cells per test

Antibody Concentration Used:  $0.5 \mu\text{g}/10^6$  cells

Isotypic Control: FITC Rat IgG<sub>2b</sub> (CLCR2B01)

<u>Cell Source:</u>	<u>Percentage of cells stained above control:</u>
Spleen	76.5%
Thymus	20.9%



**N.B.** Appropriate control samples should always be included in any labeling studies.

\* For optimal results in various applications, it is recommended that each investigator determine dilutions appropriate for individual use.

## **REFERENCES:**

1. Lesley, J. and Trowbridge, I.S. 1982 Genetic characterization of a polymorphic murine cell-surface glycoprotein. Immunogenetics 15:313-320.
2. Lesley, J., Hyman, R. and Kincade, P.W. 1993 CD44 and its interaction with extracellular matrix. Advances in Immunol. 54:271-335.
3. Kato, S., J.B. McCarthy, and P.W. Kincade. 1994. Characterization of soluble CD44 in the circulation of mice. Levels are affected by immune activity and tumor growth. J.Immunol. 153:3440-3449.

**FOR RESEARCH USE ONLY**

® is a Registered Trademark of Cedarlane Laboratories Limited.