



# SZABO SCANDIC

Part of Europa Biosite

## Produktinformation



Forschungsprodukte & Biochemikalien



Zellkultur & Verbrauchsmaterial



Diagnostik & molekulare Diagnostik



Laborgeräte & Service

Weitere Information auf den folgenden Seiten!  
See the following pages for more information!



### Lieferung & Zahlungsart

siehe unsere [Liefer- und Versandbedingungen](#)

### Zuschläge

- Mindermengenzuschlag
- Trockeneiszuschlag
- Gefahrgutzuschlag
- Expressversand

### SZABO-SCANDIC HandelsgmbH

Quellenstraße 110, A-1100 Wien

T. +43(0)1 489 3961-0

F. +43(0)1 489 3961-7

[mail@szabo-scandic.com](mailto:mail@szabo-scandic.com)

[www.szabo-scandic.com](http://www.szabo-scandic.com)

[linkedin.com/company/szaboscandic](https://www.linkedin.com/company/szaboscandic) 

Technically  
Speaking

**CEDARLANE**<sup>®</sup>  
[www.cedarlanelabs.com](http://www.cedarlanelabs.com)



Conveniently Delivering You Today's Innovations  
for the Science of Tomorrow™

**Anti Mouse CD5 (Ly-1)  
Monoclonal Antibody**

Catalogue#	Format	Size	Concentration	Isotype Control
CL8964AP	Purified	250µg	1.0 mg/ml	CLCR2B00
CL8964B	Biotin	100µg	0.1 mg/ml	CLCR2B15
CL8964F	FITC	100µg	0.1 mg/ml	CLCR2B01
CL8964PE	PE	50µg	0.1 mg/ml	CLCR2B04

**Ig Class:** Rat IgG<sub>2b</sub>

**DESCRIPTION:**

Cedarlane's anti-mouse CD5 (Ly-1) Monoclonal Antibody is specific for the mouse CD5 antigen. This transmembrane glycoprotein is a T-cell associated marker that is also expressed by two B-cell neoplasms, lymphocytic leukemia and mantle cell lymphoma. CD5 is expressed on all T cells early in development, a subset of B cells described as B1a B cells, 95% of thymocytes and 72% of peripheral blood lymphocytes. CD5 has a molecular weight of 67KDa and belongs to the cysteine-rich macrophage scavenger receptor family of proteins.

The CD5 receptor is physically associated with the antigen receptor complex in both T and B cells and modulates intracellular signals initiated by both TCR and BCR. CD5 is also a counter receptor for CD72.

This antibody is suitable for use in flow cytometry.

**PRESENTATION:**

**Purified:** Purified IgG buffered in PBS and 0.02% NaN<sub>3</sub>. (Purified from ascitic fluid via Protein G Chromatography). For maximal recovery of contents, please quick-spin vial before opening.

**Biotin, FITC and PE:** Biotin/FITC/PE conjugated IgG buffered in PBS, 0.02% NaN<sub>3</sub> and EIA grade BSA as a stabilizing protein to bring total protein concentration to 4-5 mg/ml.

**STORAGE/STABILITY:**

For all formats, store at 4°C. DO NOT FREEZE PE conjugates. For long term storage (**Purified, Biotin and FITC**), aliquot and freeze unused portion at -20°C in volumes appropriate for single usage. Avoid freeze/thaw cycles.

*Continued Overleaf.....*

Visit our website for your local distributor.

**CEDARLANE**<sup>®</sup>



[www.cedarlanelabs.com](http://www.cedarlanelabs.com)

An ISO 9001:2000 and ISO 13485:2003  
registered company.

**In CANADA: Toll Free: 1-800-268-5058**

4410 Paletta Court, Burlington, ON L7L 5R2 ph: (289) 288-0001, fax: (289) 288-0020  
e-mail: [general@cedarlanelabs.com](mailto:general@cedarlanelabs.com)

**In the USA: Toll Free: 1-800-721-1644**

1210 Turrentine Street, Burlington, NC 27215 ph: (336) 513-5135, fax: (336) 513-5138  
e-mail: [service@cedarlanelabs.com](mailto:service@cedarlanelabs.com)

**SPECIFICATIONS:**

Clone: YTS 121.5.2

Immunogen: CBA Mouse thymocytes

Specificity: Mouse CD5 transmembrane glycoprotein

**TEST RESULTS:**

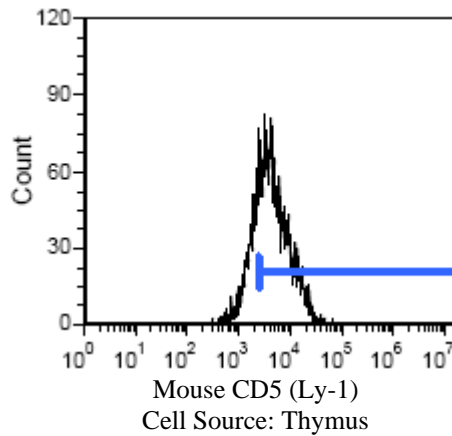
Tissue Distribution by Flow Cytometry Analysis:

Strain: ATH

Cell Concentration:  $1 \times 10^6$  cells per test

Antibody Concentration Used:  $1.0 \mu\text{g}/10^6$  cells

<u>Cell Source</u>	<u>Percentage of cell stained above control:</u>
Thymus	75.4%
Spleen	13.7%
Lymph Node	46.0%



**N.B. Appropriate control samples should always be included in any labeling studies.**

**\* For optimal results in various applications, it is recommended that each investigator determine dilutions appropriate for individual use.**

**REFERENCES:**

1. Raman C et al. 1998. Regulation of Casein Kinase 2 by Direct Interaction with Cell Surface Receptor CD5. *The Journal of Biological Chemistry*. July 24, 273 (30):19183-19189.
2. Ledbetter J.A et al. 1980. T Cell Subsets Defined By Expression of Lyt – 1,2,3 AND Thy-1 Antigens. *The Journal of Experimental Medicine*. August, 152:280-295.
3. Ewijk W et al. 1981. Fluorescence Analysis and Anatomic Distribution of Mouse T Lymphocyte Subsets Defined By Monoclonal Antibodies To The Antigens THY-1, LYT-1, LYT-2, and T-200. *The Journal of Immunology*. December, 127 (6):2594-2604.

**FOR RESEARCH USE ONLY**

® is a registered trademark of Cedarlane Laboratories Ltd.