



SZABO SCANDIC

Part of Europa Biosite

Produktinformation



Forschungsprodukte & Biochemikalien



Zellkultur & Verbrauchsmaterial



Diagnostik & molekulare Diagnostik



Laborgeräte & Service

Weitere Information auf den folgenden Seiten!
See the following pages for more information!



Lieferung & Zahlungsart

siehe unsere [Liefer- und Versandbedingungen](#)

Zuschläge

- Mindermengenzuschlag
- Trockeneiszuschlag
- Gefahrgutzuschlag
- Expressversand

SZABO-SCANDIC HandelsgmbH

Quellenstraße 110, A-1100 Wien

T. +43(0)1 489 3961-0

F. +43(0)1 489 3961-7

mail@szabo-scandic.com

www.szabo-scandic.com

[linkedin.com/company/szaboscandic](https://www.linkedin.com/company/szaboscandic) 

Technically
Speaking

CEDARLANE[®] 
www.cedarlanelabs.com

Conveniently Delivering You Today's Innovations
for the Science of Tomorrow™

**Anti-Mouse Endoglin (CD105)
Monoclonal Antibody**

Catalogue#	Format	Size	Concentration	Isotype Control
CL8983AP	Purified	250ug	1.0 mg/ml	CLCR2A00
CL8983B	Biotin	100ug	0.1 mg/ml	CLCR2A15
CL8983F	FITC	100ug	0.1 mg/ml	CLCR2A01
CL8983PE	PE	50ug	0.1 mg/ml	CLCR2A04

Isotype: Rat IgG_{2a} k

DESCRIPTION:

Cedarlane's anti-mouse CD105 monoclonal antibody specifically binds mouse Endoglin, a cell surface glycoprotein which is highly expressed on human vascular endothelial cells. It is also found on activated monocytes, macrophages, stromal cells and some cytotrophoblasts. CD105 is a type I integral membrane protein. This 90 kDa homodimer forms a heteromeric complex with TGF beta receptors I or II to modulate recognition of TGF-β1 and TGF-β3. Endoglin also recognizes other growth factors such as activin A, BMP-2 and BMP-7. Endoglin is involved in cardiovascular development, and may be a useful marker for identifying proliferating endothelium in tumors, as well as for tumor imaging.

PRESENTATION:

Purified: Purified IgG buffered in PBS and 0.02% NaN₃. (Purified from ascitic fluid via Protein G Chromatography). For maximum recovery of contents, spin down tube before use.

Biotin, FITC and PE: Biotin/FITC/PE conjugated IgG buffered in PBS, 0.02% NaN₃ and EIA grade BSA as a stabilizing protein to bring total protein concentration to 4-5 mg/ml.

STORAGE/STABILITY:

For all formats, store at 4°C. DO NOT FREEZE PE conjugates. For long term storage (**Purified, Biotin, FITC**), aliquot and freeze unused portion at -20°C in volumes appropriate for single usage. Avoid freeze/thaw cycles.

APPLICATION:

This antibody is suitable for use in Western Blot, Immunoprecipitation, Immunohistochemistry, and Flow Cytometry.

Visit our website for your local distributor.

CEDARLANE[®] 

www.cedarlanelabs.com

An ISO 9001:2000 and ISO 13485:2003
registered company.

In CANADA: Toll Free: 1-800-268-5058

4410 Paletta Court, Burlington, ON L7L 5R2 ph: (289) 288-0001, fax: (289) 288-0020
e-mail: general@cedarlanelabs.com

In the USA: Toll Free: 1-800-721-1644

1210 Turrentine Street, Burlington, NC 27215 ph: (336) 513-5135, fax: (336) 513-5138
e-mail: service@cedarlanelabs.com

SPECIFICATIONS:

Clone: MJ7/18

Hybridoma Production:

Immunization: Rat monoclonal antibody raised against inflamed mouse skin.

Specificity: This antibody is specific for mouse Endoglin (CD105).

TEST RESULTS:

Tissue Distribution by Flow Cytometry Analysis:

Mouse Strain: H5V cell line (murine heart capillary endothelium)

Cell Concentration: 1×10^6 cells per tests

Antibody Concentration Used: $0.5 \mu\text{g}/10^6$ cells

Cell Source:

Bone Marrow

Thymus

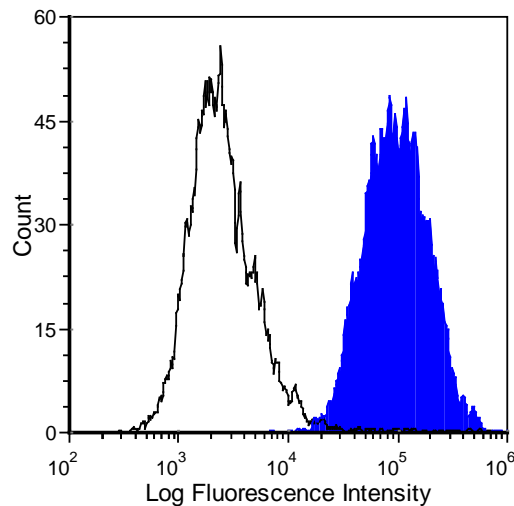
H5V cells

Percentage of cells stained above control:

5.8%

1.1%

77.9%



H5V mouse endothelial cells stained with anti-CD105 (clone: MJ7/18) (filled histogram) or rat IgG2a isotype control (open histogram).

N.B. Appropriate control samples should always be included in any labeling studies.

*** For optimal results in various applications, it is recommended that each investigator determine dilutions appropriate for individual use.**

REFERENCES:

1. Fonsatti E, Altomonte M, Nicotra MR, Natali PG, Maio M. **Endoglin (CD105): a powerful therapeutic target on tumor-associated angiogenic blood vessels.** *Oncogene.* 22: 6557–63. 2003.
2. Cai W, Rao J, Gambhir SS, Chen X. **How molecular imaging is speeding up antiangiogenic drug development.** *Mol Cancer Ther.* Nov; 5(11): 2624-33. 2006.
3. Ge AZ, Butcher EC. **Cloning and expression of a cDNA encoding mouse endoglin, an endothelial cell TGF-beta ligand.** *Gene.* Jan 28; 138(1-2): 201-6. 1994.
4. Ouellette MJ, Hamel L, Tremblay N, Lamothe M, St-Jacques S. **Characterization of endoglin on mouse uterine stromal cells.** *J Reprod Fertil.* Nov; 117(2): 229-39. 1999.

FOR RESEARCH USE ONLY

® is a registered trademark of Cedarlane Laboratories Ltd.