



# SZABO SCANDIC

Part of Europa Biosite

## Produktinformation



Forschungsprodukte & Biochemikalien



Zellkultur & Verbrauchsmaterial



Diagnostik & molekulare Diagnostik



Laborgeräte & Service

Weitere Information auf den folgenden Seiten!  
See the following pages for more information!



### Lieferung & Zahlungsart

siehe unsere [Liefer- und Versandbedingungen](#)

### Zuschläge

- Mindermengenzuschlag
- Trockeneiszuschlag
- Gefahrgutzuschlag
- Expressversand

### SZABO-SCANDIC HandelsgmbH

Quellenstraße 110, A-1100 Wien

T. +43(0)1 489 3961-0

F. +43(0)1 489 3961-7

[mail@szabo-scandic.com](mailto:mail@szabo-scandic.com)

[www.szabo-scandic.com](http://www.szabo-scandic.com)

[linkedin.com/company/szaboscandic](https://www.linkedin.com/company/szaboscandic) 

Technically  
Speaking

**CEDARLANE**<sup>®</sup>   
[www.cedarlanelabs.com](http://www.cedarlanelabs.com)

Conveniently Delivering You Today's Innovations  
for the Science of Tomorrow™

**Anti-Mouse CD160  
Monoclonal Antibody**

Catalogue#	Format	Size	Concentration	Isotype Control
<b>CL8989AP</b>	Purified	250 µg	1 mg/ml	CLCR2A00
<b>CL8989APC</b>	APC	100 µg	0.1mg/ml	CLCR2A05
<b>CL8989B</b>	Biotin	100 µg	0.1mg/ml	CLCR2A15
<b>CL8989F</b>	FITC	100 µg	0.1 mg/ml	CLCR2A01
<b>CL8989NA</b>	Purified	1 mg	1 mg/ml	CLCR2A00
<b>CL8989PE</b>	PE	50 µg	0.1 mg/ml	CLCR2A04

Isotype: Rat IgG<sub>2a,κ</sub>

**DESCRIPTION:**

Cedarlane's mouse CD160 monoclonal antibody (clone CNX46-3) detects a GPI-anchored homodimer consisting of ~20 kDa chains. Mouse CD160 is expressed on subsets of NK cells, NKT cells and activated CD8 T cells, and interacts with a broad range of MHC I including CD1d. It is thought to regulate the cytokine production of NK cells. Mouse CD160 is also the first Ig-like receptor for MHC I identified on mouse NK cells.

This non-blocking antibody is suitable for use in flow cytometry and Western Blotting.

**PRESENTATION:**

**Purified:** Purified IgG buffered in PBS and 0.02% NaN<sub>3</sub>. (Purified from ascitic fluid via Protein G Chromatography).

**APC, Biotin, FITC and PE:** APC/Biotin/FITC/PE conjugated IgG buffered in PBS, 0.02% NaN<sub>3</sub> and EIA grade BSA as a stabilizing protein to bring total protein concentration to 4-5 mg/mL.

**No Azide:** Purified Ig buffered in PBS, no preservative, 0.2µm sterile filtered.

**STORAGE/STABILITY:**

For all formats, store at 4°C. DO NOT FREEZE **PE and APC** conjugates. For long term storage (**Purified, Biotin, FITC, No Azide**), aliquot and freeze unused portion at -20°C in volumes appropriate for single usage. Avoid freeze/thaw cycles.

*Continued Overleaf.....*

Visit our website for your local distributor.

**CEDARLANE**<sup>®</sup> 

[www.cedarlanelabs.com](http://www.cedarlanelabs.com)

An ISO 9001:2000 and ISO 13485:2003  
registered company.

**In CANADA: Toll Free: 1-800-268-5058**

4410 Paletta Court, Burlington, ON L7L 5R2 ph: (289) 288-0001, fax: (289) 288-0020  
e-mail: [general@cedarlanelabs.com](mailto:general@cedarlanelabs.com)

**In the USA: Toll Free: 1-800-721-1644**

1210 Turrentine Street, Burlington, NC 27215 ph: (336) 513-5135, fax: (336) 513-5138  
e-mail: [service@cedarlanelabs.com](mailto:service@cedarlanelabs.com)

**SPECIFICATIONS:**

Clone: CNX46-3

Immunogen: Mouse CD160 Recombinant Protein

Specificity: Mouse CD160

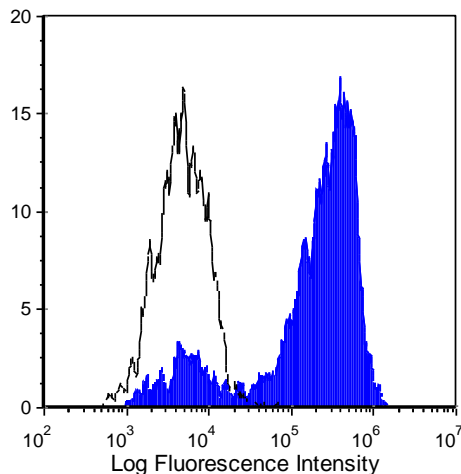
**TEST RESULTS:**

Tissue Distribution by Flow Cytometry Analysis:

Mouse Strain: C3H/HE

Cell Concentration:  $1 \times 10^6$  cells per tests

Antibody Concentration Used:  $1.0 \mu\text{g}/10^6$  cells



Cell Source: Intestinal Intraepithelial Lymphocytes

**N.B. Appropriate control samples should always be included in any labeling studies.**

**\* For optimal results in various applications, it is recommended that each investigator determine dilutions appropriate for individual use.**

**REFERENCES:**

1. Maeda, M., *et al.* 2005. Murine CD160, Ig-Like Receptor on NK Cells and NKT Cells, Recognizes Classical and Nonclassical MHC Class I and Regulates NK Cell Activation. *Journal of Immunology.* **175:** 4426-4432.

**FOR RESEARCH USE ONLY**  
® is a registered trademark of Cedarlane