



# SZABO SCANDIC

Part of Europa Biosite

## Produktinformation



Forschungsprodukte & Biochemikalien



Zellkultur & Verbrauchsmaterial



Diagnostik & molekulare Diagnostik



Laborgeräte & Service

Weitere Information auf den folgenden Seiten!  
See the following pages for more information!



### Lieferung & Zahlungsart

siehe unsere [Liefer- und Versandbedingungen](#)

### Zuschläge

- Mindermengenzuschlag
- Trockeneiszuschlag
- Gefahrgutzuschlag
- Expressversand

### SZABO-SCANDIC HandelsgmbH

Quellenstraße 110, A-1100 Wien

T. +43(0)1 489 3961-0

F. +43(0)1 489 3961-7

[mail@szabo-scandic.com](mailto:mail@szabo-scandic.com)

[www.szabo-scandic.com](http://www.szabo-scandic.com)

[linkedin.com/company/szaboscandic](https://www.linkedin.com/company/szaboscandic) 

Technically  
Speaking

**CEDARLANE**<sup>®</sup>  
[www.cedarlanelabs.com](http://www.cedarlanelabs.com)



Conveniently Delivering You Today's Innovations  
for the Science of Tomorrow™

**Anti-Mouse CD45R (Ly 5, B220)  
Monoclonal Antibody**

Catalogue#	Format	Size	Concentration	Isotype Control
<b>CL8990A</b>	Ascites	0.5ml	NA	CLCR2A00
<b>CL8990AC7</b>	APC-Cy7	100µg	0.2 mg/ml	CLCR2A14
<b>CL8990AP</b>	Purified	250µg	1.0 mg/ml	CLCR2A00
<b>CL8990B/-3</b>	Biotin	100µg/300µg	0.1 mg/ml	CLCR2A15
<b>CL8990F/-3</b>	FITC	100µg/300µg	0.1 mg/ml	CLCR2A01
<b>CL8990APC</b>	APC	100µg	0.1 mg/ml	CLCR2A05
<b>CL8990NA</b>	No Azide	1.0mg	1.0 mg/ml	CLCR2A00
<b>CL8990PC7</b>	PE-Cy7	0.1 mg	0.2 mg/ml	CLCR2A12
<b>CL8990PE/-3</b>	PE	50µg/300µg	0.1 mg/ml	CLCR2A04
<b>CL8990TC</b>	PE-Cy5	0.1 mg	0.2 mg/ml	CLCR2A06

Isotype: Rat IgG<sub>2a</sub>

**DESCRIPTION:**

Cedarlane's anti-mouse CD45R, B220 (Ly 5) monoclonal antibody reacts with a form of the CD45 antigen found on B cells and lytically active subsets of NK cells and non - MHC restricted CTL's<sup>(1,2,3,4)</sup>.

This antibody immunoprecipitates the high molecular weight (220,000 Da) surface molecule of the leukocyte common antigen B220<sup>(1)</sup> on B cells. Applications include flow cytometry and immunoprecipitation<sup>(1)</sup>. Also reacts with human B cells and is reported to work in immunohistochemical applications, both frozen and paraffin sections<sup>(5)</sup>.

**PRESENTATION:**

**Ascites:** Lyophilized

**Purified:** Purified IgG buffered in PBS and 0.02% NaN<sub>3</sub>. (Purified from ascitic fluid via Protein G Chromatography). For maximum recovery of contents, spin down tube before use.

**APC, Biotin, FITC and PE:** Biotin/FITC/PE conjugated IgG buffered in PBS, 0.02% NaN<sub>3</sub> and EIA grade BSA as a stabilizing protein to bring total protein concentration to 4-5 mg/ml.

**PE-Cy5, PE-Cy7 and APC-Cy7:** PE-Cy5/PE-Cy7/APC-Cy7 conjugated Ig buffered in PBS, 0.1% NaN<sub>3</sub> and EIA grade BSA as a stabilizing protein to bring total protein concentration to 4-5 mg/ml.

**No Azide:** Purified Ig buffered in PBS, no preservative, 0.2µm sterile filtered.

**STORAGE/STABILITY:**

Store **Ascites** at -20°C. For all other formats, store at 4°C. DO NOT FREEZ **APC, APC-Cy7, PE-Cy5, PE-Cy7** and **PE** conjugates. For long term storage (**Purified, Biotin** and **FITC**), aliquot and freeze unused portion at -20°C in volumes appropriate for single usage. Avoid freeze/thaw cycles.

Visit our website for your local distributor.

**CEDARLANE**<sup>®</sup>



[www.cedarlanelabs.com](http://www.cedarlanelabs.com)

An ISO 9001:2000 and ISO 13485:2003  
registered company.

In CANADA: Toll Free: 1-800-268-5058

4410 Paletta Court, Burlington, ON L7L 5R2 ph: (289) 288-0001, fax: (289) 288-0020  
e-mail: [general@cedarlanelabs.com](mailto:general@cedarlanelabs.com)

In the USA: Toll Free: 1-800-721-1644

1210 Turrentine Street, Burlington, NC 27215 ph: (336) 513-5135, fax: (336) 513-5138  
e-mail: [service@cedarlanelabs.com](mailto:service@cedarlanelabs.com)

**SPECIFICATIONS:**

Clone: RA3-6B2

Hybridoma Production:

Immunization: Immunogen: Mouse pre-B tumour cells (RAW112).  
Donor: Lewis rat spleen

Fusion Partner: S 194/5. XXO. BU-1

Specificity: Mouse CD45R, B220 (Ly 5)

**TEST RESULTS:**

Tissue Distribution by Flow Cytometry Analysis:

Mouse Strain: BALB/c

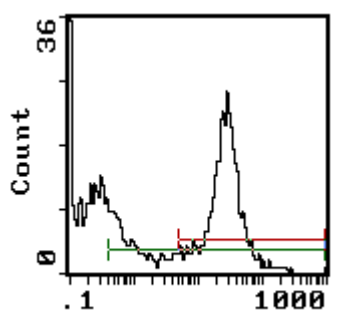
Cell Concentration: 1x10<sup>6</sup> cells per tests

Antibody Concentration Used: 0.5 µg/10<sup>6</sup> cells,

Cell Source

Percentage of cells stained above control:

Thymus	2.5%
Spleen	59.0%
Lymph Node	16.4%
Human Peripheral Blood Lymphocytes	24.1%



Anti-Mouse CD45R (Ly 5, B220)

Cell Source: Mouse Spleen

**N.B. Appropriate control samples should always be included in any labeling studies.**

**\* For optimal results in various applications, it is recommended that each investigator determine dilutions appropriate for individual use.**

**REFERENCES:**

- 1) Coffman, B. 1982. Surface antigen expression and immunoglobulin rearrangement during mouse pre-B cell development. Immunological Rev. 69:5 - 23.
- 2) Zuhair, K., Ballas, and Rasmussen, W., 1993. Lymphokine-activated killer cells VII. IL-4 induces an NK1.1 + CD8a+b- TCR αβ B220+ lymphokine-activated killer subset.
- 3) Asensi, V., and Kimeno, K., et al. 1989. Treatment of autoimmune MRL/lpr mice with anti-B220 monoclonal antibody reduces the level of anti-DNA antibodies and lymphadenopathies. Immunology 68: 204 -208.
- 4) Ballas, A. K., and W. Rasmussen. 1990. Lymphokine-activated killer (LAK) cells. IV. Characterization of murine LAK effector subpopulations, J. Immunol. 144:386.
- 5) Whiteland, J.L et al (1995). Immunohistochemical detection of T cell subsets and other leukocytes in paraffin embedded rat and mouse tissues with monoclonal antibodies .J. Histochem. Cytochem. 43: 313-320.

**FOR RESEARCH USE ONLY**

® is a Registered Trademark of Cedarlane