



# SZABO SCANDIC

Part of Europa Biosite

## Produktinformation



Forschungsprodukte & Biochemikalien



Zellkultur & Verbrauchsmaterial



Diagnostik & molekulare Diagnostik



Laborgeräte & Service

Weitere Information auf den folgenden Seiten!  
See the following pages for more information!



### Lieferung & Zahlungsart

siehe unsere [Liefer- und Versandbedingungen](#)

### Zuschläge

- Mindermengenzuschlag
- Trockeneiszuschlag
- Gefahrgutzuschlag
- Expressversand

### SZABO-SCANDIC HandelsgmbH

Quellenstraße 110, A-1100 Wien

T. +43(0)1 489 3961-0

F. +43(0)1 489 3961-7

[mail@szabo-scandic.com](mailto:mail@szabo-scandic.com)

[www.szabo-scandic.com](http://www.szabo-scandic.com)

[linkedin.com/company/szaboscandic](https://www.linkedin.com/company/szaboscandic) 

Technically  
Speaking

**CEDARLANE**<sup>®</sup>  
[www.cedarlanelabs.com](http://www.cedarlanelabs.com)



Conveniently Delivering You Today's Innovations  
for the Science of Tomorrow™

**Anti-Mouse Granulocytes (Gr-1)  
Monoclonal Antibody**

| Catalogue#       | Format                       | Size   | Concentration | Isotype Control |
|------------------|------------------------------|--------|---------------|-----------------|
| <b>CL8991A</b>   | Ascites                      | 0.5ml  | NA            | CLCR2B00        |
| <b>CL8991AP</b>  | Purified                     | 250µg  | 1.0 mg/ml     | CLCR2B00        |
| <b>CL8991NA</b>  | Purified                     | 1.0ml  | 1.0 mg/ml     | CLCR2B00        |
| <b>CL8991B</b>   | Biotin                       | 100µg  | 0.1 mg/ml     | CLCR2B15        |
| <b>CL8991B-3</b> | Biotin                       | 300µg  | 0.1 mg/ml     | CLCR2B15        |
| <b>CL8991F</b>   | FITC                         | 100µg  | 0.1 mg/ml     | CLCR2B01        |
| <b>CL8991F-3</b> | FITC                         | 300µg  | 0.1 mg/ml     | CLCR2B01        |
| <b>CL8991APC</b> | APC                          | 100µg  | 0.1 mg/ml     | CLCR2B05        |
| <b>CL8991PE</b>  | PE                           | 50µg   | 0.1 mg/ml     | CLCR2B04        |
| <b>CL8991AF4</b> | Alexa Fluor <sup>®</sup> 488 | 100 µg | 0.1 mg/ml     | N/A             |

Alexa Fluor<sup>®</sup> is a registered trademark of Life Technologies Corporation.

Isotype: Rat IgG<sub>2b</sub>

**DESCRIPTION:**

Cedarlane's anti-mouse Gr-1 monoclonal antibody reacts with the myeloid differentiation antigen Gr-1. (1,2). This 25-30 kDa cell surface antigen is expressed on myeloid cells but not lymphoid or erythroid cells. The expression of the Gr-1 antigen increases with granulocyte maturation (3) as shown by the distinct populations of bone-marrow cells this monoclonal antibody labels: negative, low positive and high positive. Expression is transient on cells of monocytic lineage (3).

CL8991 is a useful antibody for studies of myeloid differentiation stages and their regulations by cytokines. Applications include flow cytometry (1,2,3) complement-mediated depletion (4) Western blot staining (5) and both frozen and paraffin sections (6).

**PRESENTATION:**

**Ascites:** Lyophilized

**Purified:** Purified IgG buffered in PBS and 0.02% NaN<sub>3</sub>. (Purified from ascitic fluid via Protein G Chromatography). For maximum recovery of contents, spin down tube before use.

**APC, Biotin, FITC, PE and AF488:** Biotin/FITC/PE/AF488 conjugated IgG buffered in PBS, 0.02% NaN<sub>3</sub> and EIA grade BSA as a stabilizing protein to bring total protein concentration to 4-5 mg/ml.

**No Azide:** Purified Ig buffered in PBS, no preservative, 0.2µm sterile filtered.

**STORAGE/STABILITY:**

Store **Ascites** at -20°C. For all other formats, store at 4°C. **DO NOT FREEZE APC, PE and AF488** conjugates. For long term storage (**Purified, Biotin** and **FITC**), aliquot and freeze unused portion at -20°C in volumes appropriate for single usage. Avoid freeze/thaw cycles.

Visit our website for your local distributor.

**CEDARLANE**<sup>®</sup>



[www.cedarlanelabs.com](http://www.cedarlanelabs.com)

An ISO 9001:2000 and ISO 13485:2003  
registered company.

In CANADA: **Toll Free: 1-800-268-5058**

4410 Paletta Court, Burlington, ON L7L 5R2 ph: (289) 288-0001, fax: (289) 288-0020  
e-mail: [general@cedarlanelabs.com](mailto:general@cedarlanelabs.com)

In the USA: **Toll Free: 1-800-721-1644**

1210 Turrentine Street, Burlington, NC 27215 ph: (336) 513-5135, fax: (336) 513-5138  
e-mail: [service@cedarlanelabs.com](mailto:service@cedarlanelabs.com)

## **SPECIFICATIONS:**

Clone: RB6-8C5

Immunogen: granulocytes of mouse origin

Specificity: Mouse Gr-1

Strains Tested: BALB/c, C57BL/6, CBA, C3H/He, AKR

Positive: BALB/c, C57BL/6, CBA, C3H/He, AKR

Negative: None

## **TEST RESULTS:**

Tissue Distribution by Flow Cytometry Analysis:

Mouse Strain: BALB/c

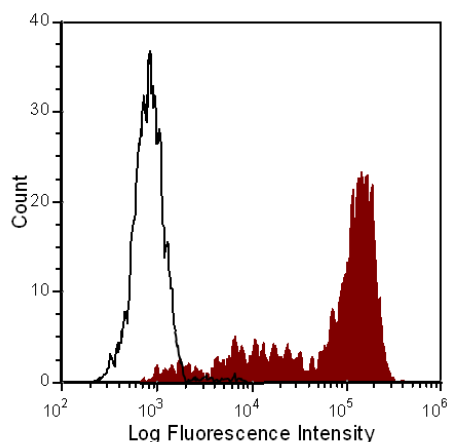
Cell Concentration:  $1 \times 10^6$  cells per test

Antibody Concentration Used:  $0.2 \mu\text{g}/10^6$  cells

Cell Source

Percentage of cells stained above control:

|                         |       |
|-------------------------|-------|
| Thymus                  | 2.0%  |
| Whole Blood Monocytes   | 79.1% |
| Bone Marrow Macrophages | 87.5% |



Balb/c mouse bone marrow (high SSC population) was stained with anti-Granulocytes (Gr-1) (clone: RB6-8C5) (filled histogram) or rat IgG2b isotype control (open histogram).

**N.B. Appropriate control samples should always be included in any labeling studies.**

**\* For optimal results in various applications, it is recommended that each investigator determine dilutions appropriate for individual use.**

## **REFERENCES:**

1. Spangrude, G.J., et al. Purification and characterization of mouse hematopoietic stem cells. *Science* 241:58-62, 1991.
2. Muller, C. E. et al. Isolation of two early B lymphocyte progenitors from mouse marrow: a committed pre-pre-B cell and a clonogenic thy-1 lo hematopoietic stem cell. *Cell* 44:653-662.
3. H. Kjetil et al. Characterization and regulation of RB6-8C5 antigen expression on murine bone marrow cells. 1991. *J. Immunol.* 147: 22-28.
4. Brummer, Elmer et al. Immunological activation of polymorphonuclear neutrophils for fungal killing: Studies with murine cells and blastomyces dermatitidis *in vitro*. *J. Leuko. Bio* 36:505-520, 1984.
5. Jutila, M.A. et al. Ly-6C is a monocyte/macrophage and endothelial cell differentiation antigen regulated by interferon-gamma. *J. Immunol.* 18: 1819-1826, 1988.
6. Whiteland, J.L et al (1995). Immunohistochemical detection of T cell subsets and other leukocytes in paraffin embedded rat and mouse tissues with monoclonal antibodies. *J. Histochem. Cytochem.* 43: 313-320.
7. Haestdal, K., F.W. Ruscetti, J.N. Ihle, S.E.W. Jacobsen, C.M. Dubois, W.C. Kopp, D.L. and J.R. Keller 1991. Characterization and regulation of RB6-8C5 antigen expression on murine bone marrow cell. *J.Immunol.* 147:22
8. Fleming, T.J., M.L. Fleming, and T.R. Malek. 1993. Selective Expression of Ly-6G on myeloid lineage cells in bone marrow. RB6-85 mAb to granulocyte-differentiation antigen (Gr-1) detects members of the Ly-6 family. *J Immunol.* 151:139

**For Research Use Only**

® is a Registered Trademark of Cedarlane.