



SZABO SCANDIC

Part of Europa Biosite

Produktinformation



Forschungsprodukte & Biochemikalien



Zellkultur & Verbrauchsmaterial



Diagnostik & molekulare Diagnostik



Laborgeräte & Service

Weitere Information auf den folgenden Seiten!
See the following pages for more information!



Lieferung & Zahlungsart

siehe unsere [Liefer- und Versandbedingungen](#)

Zuschläge

- Mindermengenzuschlag
- Trockeneiszuschlag
- Gefahrgutzuschlag
- Expressversand

SZABO-SCANDIC HandelsgmbH

Quellenstraße 110, A-1100 Wien

T. +43(0)1 489 3961-0

F. +43(0)1 489 3961-7

mail@szabo-scandic.com

www.szabo-scandic.com

[linkedin.com/company/szaboscandic](https://www.linkedin.com/company/szaboscandic) 

Technically
Speaking

CEDARLANE[®]
www.cedarlanelabs.com



Conveniently Delivering You Today's Innovations
for the Science of Tomorrow™

**Anti-Mouse Granulocytes (Gr-1)
Monoclonal Antibody**

Catalogue#	Format	Size	Concentration	Isotype Control
CL8991A	Ascites	0.5ml	NA	CLCR2B00
CL8991AP	Purified	250µg	1.0 mg/ml	CLCR2B00
CL8991NA	Purified	1.0ml	1.0 mg/ml	CLCR2B00
CL8991B	Biotin	100µg	0.1 mg/ml	CLCR2B15
CL8991B-3	Biotin	300µg	0.1 mg/ml	CLCR2B15
CL8991F	FITC	100µg	0.1 mg/ml	CLCR2B01
CL8991F-3	FITC	300µg	0.1 mg/ml	CLCR2B01
CL8991APC	APC	100µg	0.1 mg/ml	CLCR2B05
CL8991PE	PE	50µg	0.1 mg/ml	CLCR2B04
CL8991AF4	Alexa Fluor [®] 488	100 µg	0.1 mg/ml	N/A

Alexa Fluor[®] is a registered trademark of Life Technologies Corporation.

Isotype: Rat IgG_{2b}

DESCRIPTION:

Cedarlane's anti-mouse Gr-1 monoclonal antibody reacts with the myeloid differentiation antigen Gr-1. (1,2). This 25-30 kDa cell surface antigen is expressed on myeloid cells but not lymphoid or erythroid cells. The expression of the Gr-1 antigen increases with granulocyte maturation (3) as shown by the distinct populations of bone-marrow cells this monoclonal antibody labels: negative, low positive and high positive. Expression is transient on cells of monocytic lineage (3).

CL8991 is a useful antibody for studies of myeloid differentiation stages and their regulations by cytokines. Applications include flow cytometry (1,2,3) complement-mediated depletion (4) Western blot staining (5) and both frozen and paraffin sections (6).

PRESENTATION:

Ascites: Lyophilized

Purified: Purified IgG buffered in PBS and 0.02% NaN₃. (Purified from ascitic fluid via Protein G Chromatography). For maximum recovery of contents, spin down tube before use.

APC, Biotin, FITC, PE and AF488: Biotin/FITC/PE/AF488 conjugated IgG buffered in PBS, 0.02% NaN₃ and EIA grade BSA as a stabilizing protein to bring total protein concentration to 4-5 mg/ml.

No Azide: Purified Ig buffered in PBS, no preservative, 0.2µm sterile filtered.

STORAGE/STABILITY:

Store **Ascites** at -20°C. For all other formats, store at 4°C. **DO NOT FREEZE APC, PE and AF488** conjugates. For long term storage (**Purified, Biotin** and **FITC**), aliquot and freeze unused portion at -20°C in volumes appropriate for single usage. Avoid freeze/thaw cycles.

Visit our website for your local distributor.

CEDARLANE[®]



www.cedarlanelabs.com

An ISO 9001:2000 and ISO 13485:2003
registered company.

In CANADA: **Toll Free: 1-800-268-5058**

4410 Paletta Court, Burlington, ON L7L 5R2 ph: (289) 288-0001, fax: (289) 288-0020
e-mail: general@cedarlanelabs.com

In the USA: **Toll Free: 1-800-721-1644**

1210 Turrentine Street, Burlington, NC 27215 ph: (336) 513-5135, fax: (336) 513-5138
e-mail: service@cedarlanelabs.com

SPECIFICATIONS:

Clone: RB6-8C5

Immunogen: granulocytes of mouse origin

Specificity: Mouse Gr-1

Strains Tested: BALB/c, C57BL/6, CBA, C3H/He, AKR

Positive: BALB/c, C57BL/6, CBA, C3H/He, AKR

Negative: None

TEST RESULTS:

Tissue Distribution by Flow Cytometry Analysis:

Mouse Strain: BALB/c

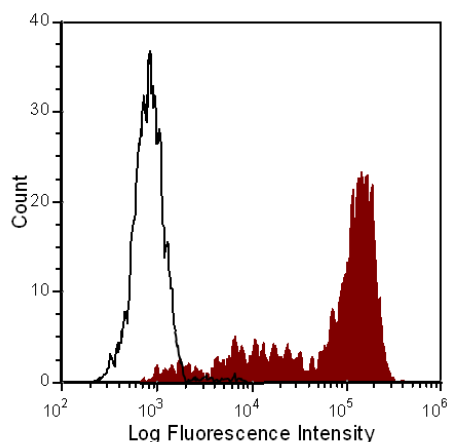
Cell Concentration: 1×10^6 cells per test

Antibody Concentration Used: $0.2 \mu\text{g}/10^6$ cells

Cell Source

Percentage of cells stained above control:

Thymus	2.0%
Whole Blood Monocytes	79.1%
Bone Marrow Macrophages	87.5%



Balb/c mouse bone marrow (high SSC population) was stained with anti-Granulocytes (Gr-1) (clone: RB6-8C5) (filled histogram) or rat IgG2b isotype control (open histogram).

N.B. Appropriate control samples should always be included in any labeling studies.

*** For optimal results in various applications, it is recommended that each investigator determine dilutions appropriate for individual use.**

REFERENCES:

1. Spangrude, G.J., et al.. Purification and characterization of mouse hematopoietic stem cells. *Science* 241:58-62, 1991.
2. Muller, C. E. et al. Isolation of two early B lymphocyte progenitors from mouse marrow: a committed pre-pre-B cell and a clonogenic thy-1 lo hematopoietic stem cell. *Cell* 44:653-662.
3. H. Kjetil et al. Characterization and regulation of RB6-8C5 antigen expression on murine bone marrow cells. 1991. *J. Immunol.* 147: 22-28.
4. Brummer, Elmer et al. Immunological activation of polymorphonuclear neutrophils for fungal killing: Studies with murine cells and blastomyces dermatitidis *in vitro*. *J. Leuko. Bio* 36:505-520, 1984.
5. Jutila, M.A. et al. Ly-6C is a monocyte/macrophage and endothelial cell differentiation antigen regulated by interferon-gamma. *J. Immunol.* 18: 1819-1826, 1988.
6. Whiteland, J.L et al (1995). Immunohistochemical detection of T cell subsets and other leukocytes in paraffin embedded rat and mouse tissues with monoclonal antibodies. *J. Histochem. Cytochem.* 43: 313-320.
7. Haestdal, K., F.W. Ruscetti, J.N. Ihle, S.E.W. Jacobsen, C.M. Dubois, W.C. Kopp, D.L. and J.R. Keller 1991. Characterization and regulation of RB6-8C5 antigen expression on murine bone marrow cell. *J.Immunol.* 147:22
8. Fleming, T.J., M.L. Fleming, and T.R. Malek. 1993. Selective Expression of Ly-6G on myeloid lineage cells in bone marrow. RB6-85 mAb to granulocyte-differentiation antigen (Gr-1) detects members of the Ly-6 family. *J Immunol.* 151:139

For Research Use Only

® is a Registered Trademark of Cedarlane.