



# SZABO SCANDIC

Part of Europa Biosite

## Produktinformation



Forschungsprodukte & Biochemikalien



Zellkultur & Verbrauchsmaterial



Diagnostik & molekulare Diagnostik



Laborgeräte & Service

Weitere Information auf den folgenden Seiten!  
See the following pages for more information!



### Lieferung & Zahlungsart

siehe unsere [Liefer- und Versandbedingungen](#)

### Zuschläge

- Mindermengenzuschlag
- Trockeneiszuschlag
- Gefahrgutzuschlag
- Expressversand

### SZABO-SCANDIC HandelsgmbH

Quellenstraße 110, A-1100 Wien

T. +43(0)1 489 3961-0

F. +43(0)1 489 3961-7

[mail@szabo-scandic.com](mailto:mail@szabo-scandic.com)

[www.szabo-scandic.com](http://www.szabo-scandic.com)

[linkedin.com/company/szaboscandic](https://www.linkedin.com/company/szaboscandic) 

Technically  
Speaking

**CEDARLANE**<sup>®</sup>  
[www.cedarlanelabs.com](http://www.cedarlanelabs.com)



Conveniently Delivering You Today's Innovations  
for the Science of Tomorrow™

### Anti-Mouse CD200R Monoclonal Antibody

Catalogue#	Format	Size	Concentration	Isotype Control
<b>CL8996AP</b>	Purified	250µg	1.0 mg/ml	CLCR2A00
<b>CL8996B</b>	Biotin	100µg	0.1 mg/ml	CLCR2A15
<b>CL8996F</b>	FITC	100µg	0.1 mg/ml	CLCR2A01
<b>CL8996PE</b>	PE	50µg	0.1 mg/ml	CLCR2A04

Isotype: Rat IgG2a

#### **DESCRIPTION:**

Cedarlane's anti-mouse CD200R monoclonal antibody reacts with CD200R, a highly conserved type I membrane glycoprotein that is expressed on a variety of cell types from the myeloid/monocytic lineage, including macrophages, dendritic cells, basophils, mast cells and polarized Th2 cells. CD200R is very similar in structure to CD200, except that it has a larger cytoplasmic domain (67 aa).

CD200R is also referred to as CD200R1. Three homologues designated CD200R2 (CD200RLc), CD200R3 (CD200RLb) and CD200R4 (CD200RLa) have also been described, each containing a short (15aa) cytoplasmic tail lacking putative ITIM motifs. It is thought that CD200R1 acts as an inhibitory receptor in contrast to CD200R2-4, which appear to be activating receptors. CD200R1-4 show variable expression in different tissues.

CD200 is the ligand for CD200R, and CD200/CD200R interactions are thought to play an important role in autoimmune disease and transplant rejection.

This clone is suitable for use in flow cytometry.

#### **PRESENTATION:**

**Purified:** Purified IgG buffered in PBS and 0.02% NaN<sub>3</sub>. (Purified from ascitic fluid via Protein G Chromatography). For maximum recovery of contents, spin down tube before use.

**Biotin, FITC and PE:** Biotin/FITC/PE conjugated IgG buffered in PBS, 0.02% NaN<sub>3</sub> and EIA grade BSA as a stabilizing protein to bring total protein concentration to 4-5 mg/ml.

#### **STORAGE/STABILITY:**

For all formats, store at 4°C. DO NOT FREEZE **PE** conjugates. For long term storage (**Purified, Biotin and FITC**), aliquot and freeze unused portion at -20°C in volumes appropriate for single usage. Avoid freeze/thaw cycles.

Visit our website for your local distributor.

**CEDARLANE**<sup>®</sup>



[www.cedarlanelabs.com](http://www.cedarlanelabs.com)

An ISO 9001:2000 and ISO 13485:2003  
registered company.

In CANADA: Toll Free: 1-800-268-5058

4410 Paletta Court, Burlington, ON L7L 5R2 ph: (289) 288-0001, fax: (289) 288-0020  
e-mail: [general@cedarlanelabs.com](mailto:general@cedarlanelabs.com)

In the USA: Toll Free: 1-800-721-1644

1210 Turrentine Street, Burlington, NC 27215 ph: (336) 513-5135, fax: (336) 513-5138  
e-mail: [service@cedarlanelabs.com](mailto:service@cedarlanelabs.com)

## **SPECIFICATIONS:**

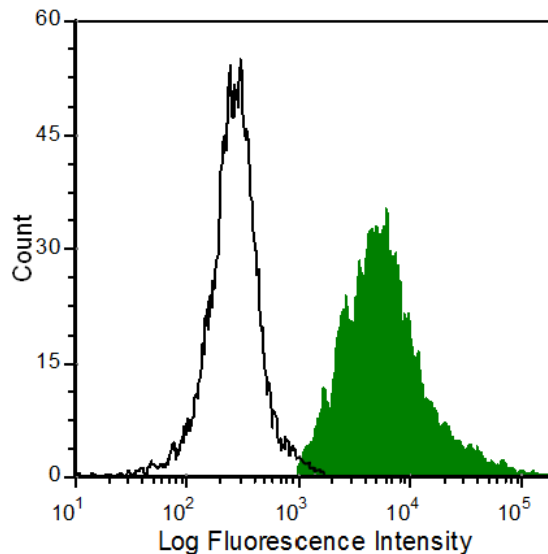
**Clone:** OX-110

### **Hybridoma Production:**

**Immunization:** Immunogen: Soluble recombinant mouse CD200R  
Donor: DA rat splenocytes

**Fusion Partner:** Y3.Ag.1.2.3 myeloma

**Specificity:** Mouse CD200R



Thioglycolate-elicited Balb/c mouse peritoneal macrophages were stained with anti-CD200R (clone: OX110) (filled histogram) or rat IgG1 isotype control (open histogram).

**N.B. Appropriate control samples should always be included in any labeling studies.**

**\* For optimal results in various applications, it is recommended that each investigator determine dilutions appropriate for individual use.**

## **REFERENCES:**

- 1) Rosenblum, M.D., *et al.* 2005. Characterization of CD200-Receptor expression in the murine epidermis. *J. Invest. Dermatol.* **125**: 1130-1138.
- 2) Wright, G.J. *et al.* 2000. Lymphoid/neuronal cell surface OX2 glycoprotein recognizes a novel receptor on macrophages implicated in the control of their function. *Immunity*, **13**: 233-242.
- 3) Gorczynski, R.M., *et al.* 2004. Structural and functional heterogeneity in the CD200R family of immunoregulatory molecules and their expression at the feto-maternal interface. *AJRI*, **52**: 147-163
- 4) Wright, G.J., *et al.* 2003. Characterization of the CD200 receptor family in mice and humans and their interactions with CD200. *J. of Immunol.* **171**: 3034-3046.
- 5) Deckert, M., *et al.* 2006. Regulation of microglial cell responses in murine *Toxoplasma* encephalitis by CD200/CD200 receptor interaction. *Acta. Neuropathol.*, **111**:548-558.
- 6) Hatherly, D., *et al.* 2005. Recombinant CD200 protein does not bind activating proteins closely related to CD200 receptor. *J. of Immunol.* **175**: 2469-2474.  
Voulgaraki, D., *et al.* 2005. Multivalent recombinant proteins for probing functions of leucocyte surface proteins such as the CD200 receptor. *Immunology*, **115**: 337-346.

**FOR RESEARCH USE ONLY**  
® is a Registered Trademark of Cedarlane