



SZABO SCANDIC

Part of Europa Biosite

Produktinformation



Forschungsprodukte & Biochemikalien



Zellkultur & Verbrauchsmaterial



Diagnostik & molekulare Diagnostik



Laborgeräte & Service

Weitere Information auf den folgenden Seiten!
See the following pages for more information!



Lieferung & Zahlungsart

siehe unsere [Liefer- und Versandbedingungen](#)

Zuschläge

- Mindermengenzuschlag
- Trockeneiszuschlag
- Gefahrgutzuschlag
- Expressversand

SZABO-SCANDIC HandelsgmbH

Quellenstraße 110, A-1100 Wien

T. +43(0)1 489 3961-0

F. +43(0)1 489 3961-7

mail@szabo-scandic.com

www.szabo-scandic.com

[linkedin.com/company/szaboscandic](https://www.linkedin.com/company/szaboscandic) 

Technically
Speaking

CEDARLANE[®] 
www.cedarlanelabs.com

Conveniently Delivering You Today's Innovations
for the Science of Tomorrow™

**Anti-Mouse CD45RC
Monoclonal Antibody**

Catalogue#	Format	Size	Concentration	Isotype Control
CL8997AP	Purified	250µg	1.0 mg/ml	CLCR100
CL8997B/-3	Biotin	100µg/300µg	0.1 mg/ml	CLCR115
CL8997F/-3	FITC	100µg/300µg	0.1 mg/ml	CLCR101
CL8997PE/-3	PE	50µg/300µg	0.1 mg/ml	CLCR104

Isotype: Rat IgG₁, k

DESCRIPTION:

CD45 (L-CA) is a transmembrane phosphotyrosine phosphatase expressed on leukocytes. Cedarlane's purified anti-mouse CD45 RC is directed against the exon C-dependent RC isoform and reacts strongly with B cells, and less intensely with most CD8+ T cells. It does not recognize CD4+ T cells and myeloid cells do not express the RC isoform.

Applications for this clone include immunohistochemistry (acetone-fixed frozen sections), flow cytometry and immunoprecipitation.

PRESENTATION:

Purified: Purified IgG buffered in PBS and 0.02% NaN₃. (Purified from ascitic fluid via Protein G Chromatography). For maximum recovery of contents, spin down tube before use.

Biotin, FITC and PE: Biotin/FITC/PE conjugated IgG buffered in PBS, 0.02% NaN₃ and EIA grade BSA as a stabilizing protein to bring total protein concentration to 4-5 mg/ml.

STORAGE/STABILITY:

For all other formats, store at 4°C. DO NOT FREEZ **PE** conjugates. For long term storage (**Purified, Biotin, and FITC**), aliquot and freeze unused portion at -20°C in volumes appropriate for single usage. Avoid freeze/thaw cycles.

Visit our website for your local distributor.

CEDARLANE[®] 

www.cedarlanelabs.com

An ISO 9001:2000 and ISO 13485:2003
registered company.

In CANADA: Toll Free: 1-800-268-5058

4410 Paletta Court, Burlington, ON L7L 5R2 ph: (289) 288-0001, fax: (289) 288-0020
e-mail: general@cedarlanelabs.com

In the USA: Toll Free: 1-800-721-1644

1210 Turrentine Street, Burlington, NC 27215 ph: (336) 513-5135, fax: (336) 513-5138
e-mail: service@cedarlanelabs.com

SPECIFICATIONS:

Clone: IBL-8

Hybridoma Production:

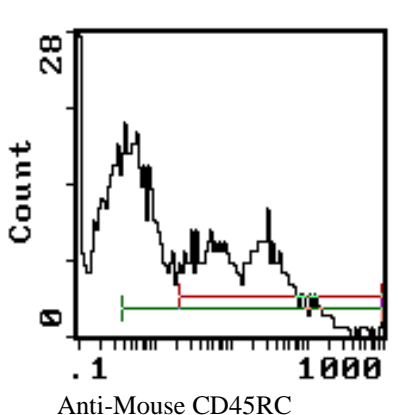
Immunization: Immunogen: Mouse Spleen Cells
Donor: Wistar spleen
Fusion Partner: Sp-2/0 Ag14

Specificity: Mouse CD45RC

TEST RESULTS:

Tissue Distribution by Flow Cytometry Analysis:

Mouse Strain: BALB/c
Cell Concentration: 1×10^6 cells per test
Antibody Concentration Used: $1.0 \mu\text{g}/10^6$ cells



Cell Source: Lymph Nodes
Percentage of cells stained above control: 34.8%

N.B. Appropriate control samples should always be included in any labeling studies.
*** For optimal results in various applications, it is recommended that each investigator determine dilutions appropriate for individual use.**

REFERENCES:

1. Czompoly T, Labadi A, Balazs M, Nemeth P, and P Balogh. Use of cyclic peptide phage display library for the identification of a CD45RC epitope expressed on murine B cells and their precursors. *Biochemical and Biophysical Research Communications*. 2003 307: 791-796.

FOR RESEARCH USE ONLY
® is a Registered Trademark of Cedarlane