



# SZABO SCANDIC

Part of Europa Biosite

## Produktinformation



Forschungsprodukte & Biochemikalien



Zellkultur & Verbrauchsmaterial



Diagnostik & molekulare Diagnostik



Laborgeräte & Service

Weitere Information auf den folgenden Seiten!  
See the following pages for more information!



### Lieferung & Zahlungsart

siehe unsere [Liefer- und Versandbedingungen](#)

### Zuschläge

- Mindermengenzuschlag
- Trockeneiszuschlag
- Gefahrgutzuschlag
- Expressversand

### SZABO-SCANDIC HandelsgmbH

Quellenstraße 110, A-1100 Wien

T. +43(0)1 489 3961-0

F. +43(0)1 489 3961-7

[mail@szabo-scandic.com](mailto:mail@szabo-scandic.com)

[www.szabo-scandic.com](http://www.szabo-scandic.com)

[linkedin.com/company/szaboscandic](https://www.linkedin.com/company/szaboscandic) 

Technically  
Speaking

**CEDARLANE**<sup>®</sup>  
[www.cedarlanelabs.com](http://www.cedarlanelabs.com)



Conveniently Delivering You Today's Innovations  
for the Science of Tomorrow™

**Anti-Mouse CD45RC  
Monoclonal Antibody**

Catalogue#	Format	Size	Concentration	Isotype Control
<b>CL8997AP</b>	Purified	250µg	1.0 mg/ml	CLCR100
<b>CL8997B/-3</b>	Biotin	100µg/300µg	0.1 mg/ml	CLCR115
<b>CL8997F/-3</b>	FITC	100µg/300µg	0.1 mg/ml	CLCR101
<b>CL8997PE/-3</b>	PE	50µg/300µg	0.1 mg/ml	CLCR104

Isotype: Rat IgG<sub>1</sub>, k

**DESCRIPTION:**

CD45 (L-CA) is a transmembrane phosphotyrosine phosphatase expressed on leukocytes. Cedarlane's purified anti-mouse CD45 RC is directed against the exon C-dependent RC isoform and reacts strongly with B cells, and less intensely with most CD8+ T cells. It does not recognize CD4+ T cells and myeloid cells do not express the RC isoform.

Applications for this clone include immunohistochemistry (acetone-fixed frozen sections), flow cytometry and immunoprecipitation.

**PRESENTATION:**

**Purified:** Purified IgG buffered in PBS and 0.02% NaN<sub>3</sub>. (Purified from ascitic fluid via Protein G Chromatography). For maximum recovery of contents, spin down tube before use.

**Biotin, FITC and PE:** Biotin/FITC/PE conjugated IgG buffered in PBS, 0.02% NaN<sub>3</sub> and EIA grade BSA as a stabilizing protein to bring total protein concentration to 4-5 mg/ml.

**STORAGE/STABILITY:**

For all other formats, store at 4°C. DO NOT FREEZ **PE** conjugates. For long term storage (**Purified, Biotin, and FITC**), aliquot and freeze unused portion at -20°C in volumes appropriate for single usage. Avoid freeze/thaw cycles.

Visit our website for your local distributor.

**CEDARLANE**<sup>®</sup>



[www.cedarlanelabs.com](http://www.cedarlanelabs.com)

An ISO 9001:2000 and ISO 13485:2003  
registered company.

In CANADA: Toll Free: 1-800-268-5058

4410 Paletta Court, Burlington, ON L7L 5R2 ph: (289) 288-0001, fax: (289) 288-0020  
e-mail: [general@cedarlanelabs.com](mailto:general@cedarlanelabs.com)

In the USA: Toll Free: 1-800-721-1644

1210 Turrentine Street, Burlington, NC 27215 ph: (336) 513-5135, fax: (336) 513-5138  
e-mail: [service@cedarlanelabs.com](mailto:service@cedarlanelabs.com)

**SPECIFICATIONS:**

Clone: IBL-8

Hybridoma Production:

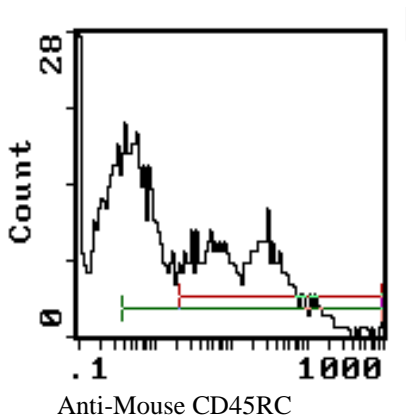
Immunization: Immunogen: Mouse Spleen Cells  
Donor: Wistar spleen  
Fusion Partner: Sp-2/0 Ag14

Specificity: Mouse CD45RC

**TEST RESULTS:**

Tissue Distribution by Flow Cytometry Analysis:

Mouse Strain: BALB/c  
Cell Concentration:  $1 \times 10^6$  cells per test  
Antibody Concentration Used:  $1.0 \mu\text{g}/10^6$  cells



Cell Source: Lymph Nodes  
Percentage of cells stained above control: 34.8%

**N.B. Appropriate control samples should always be included in any labeling studies.  
\* For optimal results in various applications, it is recommended that each investigator determine dilutions appropriate for individual use.**

**REFERENCES:**

1. Czompoly T, Labadi A, Balazs M, Nemeth P, and P Balogh. Use of cyclic peptide phage display library for the identification of a CD45RC epitope expressed on murine B cells and their precursors. *Biochemical and Biophysical Research Communications*. 2003 307: 791-796.

**FOR RESEARCH USE ONLY**  
® is a Registered Trademark of Cedarlane