



SZABO SCANDIC

Part of Europa Biosite

Produktinformation



Forschungsprodukte & Biochemikalien



Zellkultur & Verbrauchsmaterial



Diagnostik & molekulare Diagnostik



Laborgeräte & Service

Weitere Information auf den folgenden Seiten!
See the following pages for more information!



Lieferung & Zahlungsart

siehe unsere [Liefer- und Versandbedingungen](#)

Zuschläge

- Mindermengenzuschlag
- Trockeneiszuschlag
- Gefahrgutzuschlag
- Expressversand

SZABO-SCANDIC HandelsgmbH

Quellenstraße 110, A-1100 Wien

T. +43(0)1 489 3961-0

F. +43(0)1 489 3961-7

mail@szabo-scandic.com

www.szabo-scandic.com

[linkedin.com/company/szaboscandic](https://www.linkedin.com/company/szaboscandic) 

TECHNICALLY *Speaking*

Place your order with CEDARLANE® or your local distributor.

Please contact CEDARLANE® for lot specific information.

Biotin Anti-Mouse H-2K^bD^b Monoclonal Antibody

CL9007B

LOT:

DESCRIPTION:

Cedarlane's anti-mouse H-2K^bD^b monoclonal antibody is specific for cells expressing the H-2K antigen coded for by the b haplotype and for cells expressing the H-2D antigen coded for by the b haplotype.

PRESENTATION:

100 µg Biotin conjugated Ig buffered in PBS, 0.02% NaN₃ and EIA grade BSA as a stabilizing protein to bring total protein concentration to 4-5 mg/ml.

STORAGE/STABILITY:

Store at 4°C. For long term storage, aliquot and freeze unused portion at -20°C in volumes appropriate for single usage. Avoid freeze/thaw cycles.

For more information or to place an order please contact...

CEDARLANE®
LABORATORIES LIMITED



*toll free: 1-800-268-5058
in North America*

phone: (905) 878-8891 • fax: (905) 878-7800

5516 - 8th Line, R.R.#2, Hornby, Ontario, CANADA L0P 1E0

or visit our website for a list of our international distributors including contact information

website: www.cedarlanelabs.com • e-mail: info@cedarlanelabs.com

SPECIFICATIONS:

Clone: 5041.16.1

Hybridoma Production:

Immunization: Recipient: CBA/J

Immunocyte Donor: bm12:thymus,lymph node,spleen

Fusion Partner: NS-1 mouse myeloma cell line

Specificity: Mouse H-2K^bD^b

Ig Class: Mouse IgG_{2a}

Format: Biotin conjugated Ig buffered in PBS, 0.02% NaN₃ and EIA grade BSA as a stabilizing protein to bring total protein concentration to 4-5 mg/ml. (Purified from ascitic fluid via Protein G Chromatography)

Antibody Concentration: 0.1 mg/ml

FLOW CYTOMETRY ANALYSIS:**Method:**

1. Prepare a cell suspension in media A. For spleen cell preparations, deplete the red blood cell population with Lympholyte[®]-M cell separation medium (CL5030).
2. Wash 2 times.
3. Resuspend the cells to a concentration of 2×10^7 cells/ml in media A. Add 50 μ l of this suspension to each tube (each tube will then contain 1×10^6 cells, representing 1 test).
4. To each tube, add 0.1 μ g* of **CL9007B** per 10^6 cells.
5. Vortex the tubes to ensure thorough mixing of antibody and cells.
6. Incubate the tubes for 30 minutes at 4°C.
7. Wash 2 times at 4°C.
8. Add 100 μ l of secondary antibody **CLCSA1001** (Streptavidin-FITC) at a 1:500 dilution.
9. Incubate tubes at 4°C for 30 - 60 minutes (It is recommended that tubes are protected from light since most fluorochromes are light sensitive).
10. Wash 2 times at 4°C.
11. Resuspend the cell pellet in 50 μ l ice cold media B.
12. Transfer to suitable tubes for flow cytometric analysis containing 15 μ l of propidium iodide at 0.5 mg/ml in PBS. This stains dead cells by intercalating in DNA.

Media:

- A. Phosphate buffered saline (pH 7.2) + 5% normal serum of host species + sodium azide (100 μ l of 2M sodium azide in 100 mls).
- B. Phosphate buffered saline (pH 7.2) + 0.5% Bovine serum albumin + sodium azide (100 μ l of 2M sodium azide in 100 mls).

Results:Tissue Distribution by Flow Cytometry Analysis:

Mouse Strain: C57BL/6

Cell Concentration : 1×10^6 cells per tests

Antibody Concentration Used: 0.1 μ g/ 10^6 cells

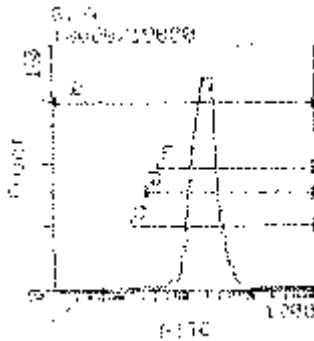
Isotypic Control: Biotin Mouse IgG_{2a}, κ

Cell Source

Thymus

Percentage of cells stained above control:

35.5%



Cell Source: Spleen

Percentage of cells stained above control: 99.2%

N.B. Appropriate control samples should always be included in any labelling studies.

*** For optimal results in various applications, it is recommended that each investigator determine dilutions appropriate for individual use.**

Strain Distribution by Flow Cytometry Analysis:

Procedure: see page 2

Cell Concentration : 1×10^6 cells per tests

Antibody Concentration Used: $0.1 \mu\text{g}/10^6$ cells

Strains Tested: C57BL/6, BALB/c, C3H/He, CBA/J

Positive: C57BL/6

Negative: BALB/c, C3H/He, CBA/J

FOR RESEARCH USE ONLY

® is a Registered Trademark of Cedarlane Laboratories Limited.