



# SZABO SCANDIC

Part of Europa Biosite

## Produktinformation



Forschungsprodukte & Biochemikalien



Zellkultur & Verbrauchsmaterial



Diagnostik & molekulare Diagnostik



Laborgeräte & Service

Weitere Information auf den folgenden Seiten!  
See the following pages for more information!



### Lieferung & Zahlungsart

siehe unsere [Liefer- und Versandbedingungen](#)

### Zuschläge

- Mindermengenzuschlag
- Trockeneiszuschlag
- Gefahrgutzuschlag
- Expressversand

### SZABO-SCANDIC HandelsgmbH

Quellenstraße 110, A-1100 Wien

T. +43(0)1 489 3961-0

F. +43(0)1 489 3961-7

[mail@szabo-scandic.com](mailto:mail@szabo-scandic.com)

[www.szabo-scandic.com](http://www.szabo-scandic.com)

[linkedin.com/company/szaboscandic](https://www.linkedin.com/company/szaboscandic) 

Technically  
Speaking

**CEDARLANE**<sup>®</sup>  
[www.cedarlanelabs.com](http://www.cedarlanelabs.com)



Conveniently Delivering You Today's Innovations  
for the Science of Tomorrow™

**Anti-Mouse CD32/CD16 (Fcγ III/II Receptors)  
Monoclonal Antibody**

Catalogue#	Format	Size	Concentration	Isotype Control
<b>CL9405AP</b>	Purified	100µg	1.0 mg/ml	CLCR2A00
<b>CL9405B</b>	Biotin	100µg	0.1 mg/ml	CLCR2A15
<b>CL9405B-3</b>	Biotin-Bulk	300µg	0.1 mg/ml	CLCR2A15
<b>CL9405F</b>	FITC	100µg	0.1 mg/ml	CLCR2A01
<b>CL9405F-3</b>	FITC-Bulk	300µg	0.1 mg/ml	CLCR2A01

Isotype: Rat IgG2a

**DESCRIPTION:**

Cedarlane's Anti-Mouse CD32/16 reacts with mouse CD32/16 (Fcγ III/II receptors) which are Fc receptors present on macrophages, NK cells, monocytes, lymphocytes, and dendritic cells. The KT1632 monoclonal antibody can be used to block Fc Receptor mediated binding of immunoglobulins to the FcγIII and FcγII receptors.

This antibody is provided in liquid form for application in single, dual or three colour flow cytometry. 1µg is the maximum amount of reagent required per 10<sup>6</sup> cells. For optimal results in various applications, it is recommended that each investigator determine dilutions appropriate for individual use.

**PRESENTATION:**

**Purified:** Purified IgG buffered in PBS and 0.02% NaN<sub>3</sub>. (Purified from ascitic fluid via Protein G Chromatography).

**Biotin and FITC:** Biotin/FITC conjugated IgG buffered in PBS, 0.02% NaN<sub>3</sub> and EIA grade BSA as a stabilizing protein to bring total protein concentration to 4-5 mg/mL.

**STORAGE/STABILITY:**

For all formats, store at 4°C. For long term storage (**Purified, Biotin, FITC**), aliquot and freeze unused portion at -20°C in volumes appropriate for single usage. Avoid freeze/thaw cycles.

**SPECIFICATIONS:**

Clone: KT1632

Specificity: Mouse CD32/16 Fcγ III/II

Visit our website for your local distributor.

**CEDARLANE**<sup>®</sup>



[www.cedarlanelabs.com](http://www.cedarlanelabs.com)

An ISO 9001:2000 and ISO 13485:2003  
registered company.

In CANADA: Toll Free: 1-800-268-5058

4410 Paletta Court, Burlington, ON L7L 5R2 ph: (289) 288-0001, fax: (289) 288-0020  
e-mail: [general@cedarlanelabs.com](mailto:general@cedarlanelabs.com)

In the USA: Toll Free: 1-800-721-1644

1210 Turrentine Street, Burlington, NC 27215 ph: (336) 513-5135, fax: (336) 513-5138  
e-mail: [service@cedarlanelabs.com](mailto:service@cedarlanelabs.com)

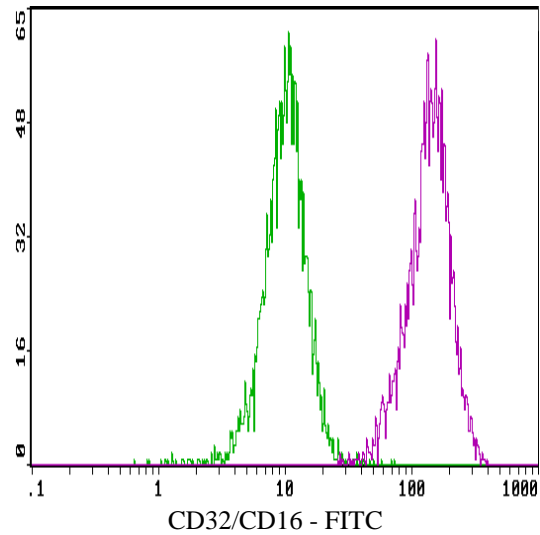
**TEST RESULTS:**

Tissue Distribution by Flow Cytometry Analysis:

Mouse Strain: BALB/c

Cell Concentration:  $1 \times 10^6$  cells per tests

Antibody Concentration Used:  $0.1 \mu\text{g}/10^6$  cells



Cell Source: Balb/c Peritoneal Macrophages  
Percentage of cells stained above control: 99%

**N.B. Appropriate control samples should always be included in any labeling studies.**

**\* For optimal results in various applications, it is recommended that each investigator determine dilutions appropriate for individual use.**

**FOR RESEARCH USE ONLY**

® is a registered trademark of Cedarlane Laboratories Ltd.