



# SZABO SCANDIC

Part of Europa Biosite

## Produktinformation



Forschungsprodukte & Biochemikalien



Zellkultur & Verbrauchsmaterial



Diagnostik & molekulare Diagnostik



Laborgeräte & Service

Weitere Information auf den folgenden Seiten!  
See the following pages for more information!



### Lieferung & Zahlungsart

siehe unsere [Liefer- und Versandbedingungen](#)

### Zuschläge

- Mindermengenzuschlag
- Trockeneiszuschlag
- Gefahrgutzuschlag
- Expressversand

### SZABO-SCANDIC HandelsgmbH

Quellenstraße 110, A-1100 Wien

T. +43(0)1 489 3961-0

F. +43(0)1 489 3961-7

[mail@szabo-scandic.com](mailto:mail@szabo-scandic.com)

[www.szabo-scandic.com](http://www.szabo-scandic.com)

[linkedin.com/company/szaboscandic](https://www.linkedin.com/company/szaboscandic) 

# Agrisera

This product is for research use only (not for diagnostic or therapeutic use)

contact: [support@agrisera.com](mailto:support@agrisera.com)

Agrisera AB | Box 57 | SE-91121 Vännäs | Sweden | +46 (0)935 33 000 | [www.agrisera.com](http://www.agrisera.com)

## Product no **AS16 3943** **SOT12 | Cytosolic Sulfotransferase 12**

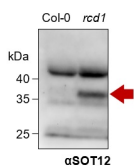
### Product information

<b>Immunogen</b>	KLH-conjugated peptide derived from <i>A. thaliana</i> SOT12 protein sequence UniProt: <a href="#">P52839</a> , TAIR: <a href="#">At2g03760</a>
<b>Host</b>	Rabbit
<b>Clonality</b>	Polyclonal
<b>Purity</b>	Affinity purified serum, in PBS pH 7.4
<b>Format</b>	Lyophilized
<b>Quantity</b>	50 µg
<b>Reconstitution</b>	For reconstitution add 50 µl, of sterile water.
<b>Storage</b>	Lyophilized antibody can be stored at -20°C for up to 3 years. Re-constituted antibody can be stored at 4°C for several days to weeks. Once reconstituted, make aliquots to avoid repeated freeze-thaw cycles. Please, remember to spin tubes briefly prior to opening them to avoid any losses that might occur from lyophilized material adhering to the cap or sides of the tubes.

### Application information

<b>Recommended dilution</b>	1 : 1500 (WB)
<b>Expected   apparent MW</b>	37 kDa   35 kDa
<b>Confirmed reactivity</b>	<i>Arabidopsis thaliana</i>
<b>Predicted reactivity</b>	<i>Arabidopsis lyrata subsp. lyrata</i> , <i>Arabis alpina</i> , <i>Brassica napus</i> , <i>Brassica oleracea var. oleracea</i> , <i>Brassica rapa subsp. pekinensis</i> , <i>Capsella rubella</i> , <i>Eutrema salsugineum</i> , <i>Noccaea caerulescens</i> Species of your interest not listed? <a href="#">Contact us</a>
<b>Not reactive in</b>	No confirmed exceptions from predicted reactivity are currently known
<b>Selected references</b>	<a href="#">Shapiguzov et al. (2019)</a> . Arabidopsis RCD1 coordinates chloroplast and mitochondrial functions through interaction with ANAC transcription factors. <i>Elife</i> . 2019 Feb 15;8. pii: e43284. doi: 10.7554/eLife.43284

#### Application example



Immunoblotting of *Arabidopsis thaliana* total protein extracts with anti-SOT12 antibody (SOT12). In the image above wild-type Col-0 is presented next to the SOT12-over-expressing mutant *rcd1*. The fragment of this image has been published in [<https://elifesciences.org/articles/43284>], Fig 6B. Leaves from mature plants were harvested and snap-frozen in liquid nitrogen. Frozen leaf material was ground to fine powder. Lysis buffer was added that contained 2% SDS, 20 mM Tris-HCl (pH 7.8), and x 100 protease inhibitor cocktail (Sigma-Aldrich #P9599). Upon addition of the buffer, the samples were vigorously mixed and then incubated 20 min at +37°C. Supernatant was cleared by centrifugation for 5 min at room temperature on the desk-top mini-centrifuge at full speed. Protein concentration was measured using DC Protein Assay Kit II (Bio-Rad #5000112). Samples were equilibrated on equal protein basis. 100 µg of total protein was loaded per well. Protein was separated in precast 4-15 % gradient mini-gels (Bio-Rad #4561085DC) and transferred to PVDF membrane by wet transfer overnight at +4°C and 130 mA, in 1 x Laemmli buffer

# Agrisera

This product is **for research use only** (not for diagnostic or therapeutic use)

contact: [support@agrisera.com](mailto:support@agrisera.com)

Agrisera AB | Box 57 | SE-91121 Vännäs | Sweden | +46 (0)935 33 000 | [www.agrisera.com](http://www.agrisera.com)

supplemented with 20 % methanol. The membrane with transferred protein was blocked for 1 hour in TBS/Tween-20 (0.01 %) with 3 % BSA. SOT12 antibody (diluted x 1 500 in 3 % BSA/TBS/Tween) was added, followed by overnight incubation at +4 °C. The membrane was washed 6 x 5 minutes with TBS/Tween. Secondary anti-rabbit HRP-conjugated antibody was added, diluted x 5 000 in 3 % BSA/TBS/Tween, and the membrane was incubated for 1 hour at room temperature. The membrane was washed 6 x 5 minutes with TBS/Tween. Immunoblotting signal was detected by chemiluminescence using the chemiluminescent detection reagent and the UVP BioSpectrum imaging system. The exposure time was 2 min.

Courtesy of Dr. Alexey Shapiguzov, Helsinki University, Finland