



SZABO SCANDIC

Part of Europa Biosite

Produktinformation



Forschungsprodukte & Biochemikalien



Zellkultur & Verbrauchsmaterial



Diagnostik & molekulare Diagnostik



Laborgeräte & Service

Weitere Information auf den folgenden Seiten!
See the following pages for more information!



Lieferung & Zahlungsart

siehe unsere [Liefer- und Versandbedingungen](#)

Zuschläge

- Mindermengenzuschlag
- Trockeneiszuschlag
- Gefahrgutzuschlag
- Expressversand

SZABO-SCANDIC HandelsgmbH

Quellenstraße 110, A-1100 Wien

T. +43(0)1 489 3961-0

F. +43(0)1 489 3961-7

mail@szabo-scandic.com

www.szabo-scandic.com

[linkedin.com/company/szaboscandic](https://www.linkedin.com/company/szaboscandic) 

Agrisera

This product is for research use only (not for diagnostic or therapeutic use)

contact: support@agrisera.com

Agrisera AB | Box 57 | SE-91121 Vännäs | Sweden | +46 (0)935 33 000 | www.agrisera.com

Product no **AS16 4072**

ATG9 | Autophagy-related protein 9 (C-terminal)

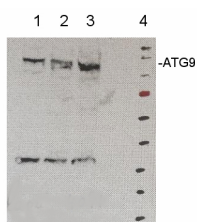
Product information

Immunogen	KLH-conjugated peptide derived from <i>Arabidopsis thaliana</i> ATG9 protein sequence, UniProt: Q8RUS5 , TAIR: AT2G31260
Host	Rabbit
Clonality	Polyclonal
Purity	Affinity purified serum, in PBS pH 7.4
Format	Lyophilized
Quantity	50 µg
Reconstitution	For reconstitution add 50 µl, of sterile water.
Storage	Store lyophilized/reconstituted at -20 °C; once reconstituted make aliquots to avoid repeated freeze-thaw cycles. Please, remember to spin tubes briefly prior to opening them to avoid any losses that might occur from lyophilized material adhering to the cap or sides of the tubes.

Application information

Recommended dilution	1 : 10 000 (WB)
Expected apparent MW	99.5 100 kDa
Confirmed reactivity	<i>Arabidopsis thaliana</i>
Predicted reactivity	<i>Aquilegia coerulea</i> , <i>Brassica napus</i> , <i>Capsella rubella</i> , <i>Daucus carota</i> , <i>Eutrema salsugineum</i> , <i>Gossypium hirsutum</i> , <i>Juglans regia</i> , <i>Lactuca sativa</i> , <i>Noccaea caerulescens</i> , <i>Theobroma cacao</i> , <i>Trema orientale</i>
Not reactive in	<i>Nicotiana tabacum</i>
Additional information	Plant ATG9 is most likely N-glycosylated, and glycosylated membrane proteins can migrate as more than one form in SDS-PAGE (smear); the protein most likely forms functional dimers which could be detected also after western blotting. Usage of microsomal fraction is highly recommended. For high resolution images, please visit the specific product page at www.agrisera.com

Application example



Increasing amount of microsomal fraction of *Arabidopsis thaliana* cell culture (**1,2,3**). Microsomal protein was extracted according to [Maudoux et al. \(2000\)](#). and denatured with loading buffer (2 % SDS) at 37 °C for 1h before SDS-PAGE gel electrophoresis and blotted to PVDF using semi-dry.

Agrisera

This product is **for research use only** (not for diagnostic or therapeutic use)

contact: support@agrisera.com

Agrisera AB | Box 57 | SE-91121 Vännäs | Sweden | +46 (0)935 33 000 | www.agrisera.com

Blots were blocked with 3 % nonfat milk + 0.1 % goat serum in TBS-T (Tween 20) for 1h at room temperature (RT) with agitation. Blot was incubated in the primary antibody at a dilution of 1: 10 000 + 1 % goat serum for ON at 4°C with agitation. The antibody solution was decanted and the blot was rinsed briefly twice, then washed once for 15 min and 3 times for 5 min in TBS-T at RT with agitation. Blot was incubated in secondary antibody (anti-rabbit IgG horse radish peroxidase conjugated) diluted to 1:10 000 in TBS-T + 1 % goat serum for 1h at RT with agitation. The blot was washed as above and developed with chemiluminescent detection reagent. Exposure time was seconds. Red marker band has apparent mass of 72 kDa.

Courtesy of Dr. Henri Batoko, University of Louvain, Belgium