



SZABO SCANDIC

Part of Europa Biosite

Produktinformation



Forschungsprodukte & Biochemikalien



Zellkultur & Verbrauchsmaterial



Diagnostik & molekulare Diagnostik



Laborgeräte & Service

Weitere Information auf den folgenden Seiten!
See the following pages for more information!



Lieferung & Zahlungsart

siehe unsere [Liefer- und Versandbedingungen](#)

Zuschläge

- Mindermengenzuschlag
- Trockeneiszuschlag
- Gefahrgutzuschlag
- Expressversand

SZABO-SCANDIC HandelsgmbH

Quellenstraße 110, A-1100 Wien

T. +43(0)1 489 3961-0

F. +43(0)1 489 3961-7

mail@szabo-scandic.com

www.szabo-scandic.com

[linkedin.com/company/szaboscandic](https://www.linkedin.com/company/szaboscandic) 

Agrisera

This product is for research use only (not for diagnostic or therapeutic use)

contact: support@agrisera.com

Agrisera AB | Box 57 | SE-91121 Vännäs | Sweden | +46 (0)935 33 000 | www.agrisera.com

Product no **AS16 4082**
RPL33 | 50S ribosomal protein L33 (chloroplastic)

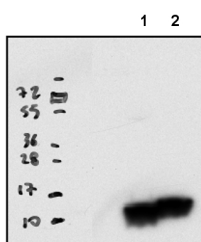
Product information

Immunogen	KLH-conjugated peptide, derived from <i>Arabidopsis thaliana</i> RPL33 UniProt: P56796 , TAIR: AtCg00640
Host	Rabbit
Clonality	Polyclonal
Purity	Affinity purified serum in PBS, pH 7.4
Format	Lyophilized
Quantity	50 µg
Reconstitution	for reconstitution add 50 µl of sterile water.
Storage	Store lyophilized/reconstituted at -20°C; once reconstituted make aliquots to avoid repeated freeze-thaw cycles. Please, remember to spin tubes briefly prior to opening them to avoid any losses that might occur from lyophilized material adhering to the cap or sides of the tubes.

Application information

Recommended dilution	1: 2000 - 1: 5000 (WB)
Expected apparent MW	7.6 10 kDa
Confirmed reactivity	<i>Arabidopsis thaliana</i> , <i>Hordeum vulgare</i> , <i>Zea mays</i>
Predicted reactivity	<i>Acacia restiacea</i> , <i>Berberis bealei</i> , <i>Blossfeldia liliputana</i> , <i>Boehmeria spicata</i> , <i>Braya humilis</i> , <i>Calochortus albus</i> , <i>Citrullus colocynthis</i> , <i>Corymbia gummifera</i> , <i>Croomia heterosepala</i> , <i>Croton texensis</i> , <i>Cucurbita pepo</i> , <i>Dodonaea viscosa</i> , <i>Eucalyptus salmonophloia</i> , <i>Fragaria ananassa</i> , <i>Gossypium populifolium</i> , <i>Hippophae rhamnoides</i> , <i>Holodiscus discolor</i> , <i>Khaya senegalensis</i> , <i>Lessertia frutescens</i> , <i>Morus alba</i> var. <i>atropurpurea</i> , <i>Natsiatum herpeticum</i> , <i>Oryza sativa</i> , <i>Pachycladon cheesemanii</i> , <i>Pereskia sacharosa</i> , <i>Polylepis</i> sp., <i>Potentilla lancinata</i> , <i>Ranzania japonica</i> , <i>Ribes fasciculatum</i> var. <i>chinense</i> , <i>Rubus niveus</i> , <i>Solanum lycopersicum</i> , <i>Solanum tuberosum</i> , <i>Sonneratia alba</i> , <i>Trifolium semipilosum</i> , <i>Typha domingensis</i> , <i>Urophysa rockii</i> , <i>Vicia faba</i> , <i>Vicia sepium</i> , <i>Ximena americana</i>
	Species of your interest not listed? Contact us
Not reactive in	cyanobacteria
Additional information	Cross reacting bands may appear when total cell extract is analysed. For high resolution images, please visit the specific product page at www.agrisera.com

Application example



10 µg of stromal protein from *Arabidopsis thaliana* (1) and *Zea mays* (2) denatured at 95°C 10 minutes were separated on 4-20% SDS-PAGE gradient gel and blotted 1h to PVDF using wet transfer (80V 1 h 30 minutes). Blot was blocked with 5 % milk in TBS-T 1h/RT. Blot was incubated in the primary antibody at a dilution of 1: 2 000 in TBS-T or ON/4°C with agitation. The antibody solution was decanted and the blot

Agrisera

This product is **for research use only** (not for diagnostic or therapeutic use)

contact: support@agrisera.com

Agrisera AB | Box 57 | SE-91121 Vännäs | Sweden | +46 (0)935 33 000 | www.agrisera.com

was rinsed briefly twice, then washed once for 15 min and 3 times for 5 min in TBS-T at RT with agitation. Blot was incubated in Agrisera matching secondary antibody (anti-rabbit IgG horse radish peroxidase conjugated [AS09 602](#)) diluted to 1:20 000 in for 1h/RT with agitation. The blot was washed as above and developed with chemiluminescent detection reagent and touch exposure was applied.

Courtesy of Dr. Louis-Valentin Mereignier, CNRS, France