



SZABO SCANDIC

Part of Europa Biosite

Produktinformation



Forschungsprodukte & Biochemikalien



Zellkultur & Verbrauchsmaterial



Diagnostik & molekulare Diagnostik



Laborgeräte & Service

Weitere Information auf den folgenden Seiten!
See the following pages for more information!



Lieferung & Zahlungsart

siehe unsere [Liefer- und Versandbedingungen](#)

Zuschläge

- Mindermengenzuschlag
- Trockeneiszuschlag
- Gefahrgutzuschlag
- Expressversand

SZABO-SCANDIC HandelsgmbH

Quellenstraße 110, A-1100 Wien

T. +43(0)1 489 3961-0

F. +43(0)1 489 3961-7

mail@szabo-scandic.com

www.szabo-scandic.com

[linkedin.com/company/szaboscandic](https://www.linkedin.com/company/szaboscandic) 

Agrisera

This product is for research use only (not for diagnostic or therapeutic use)

contact: support@agrisera.com

Agrisera AB | Box 57 | SE-91121 Vännäs | Sweden | +46 (0)935 33 000 | www.agrisera.com

Product no **AS19 4251**

eIF4A | Eukaryotic initiation factor eIF4A

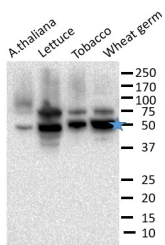
Product information

Immunogen	Recombinant eIF4A of <i>Triticum aestivum</i>
Host	Rabbit
Clonality	Polyclonal
Purity	Serum
Format	Lyophilized
Quantity	50 µl
Reconstitution	For reconstitution add 50 µl of sterile water.
Storage	Store lyophilized/reconstituted at -20°C; once reconstituted make aliquots to avoid repeated freeze-thaw cycles. Please, remember to spin tubes briefly prior to opening them to avoid any losses that might occur from lyophilized material adhering to the cap or sides of the tubes.

Application information

Recommended dilution	1: 10 000 - 1 : 20 000 (WB)
Expected apparent MW	47.2 50 kDa
Confirmed reactivity	<i>Arabidopsis thaliana</i> , <i>Lactuca sativa</i> , <i>Nicotiana tabacum</i> , <i>Triticum aestivum</i> , <i>Pisum sativum</i>
Predicted reactivity	<i>Aegilops tauschii</i> , <i>Actinidia chinensis</i> var. <i>chinensis</i> , <i>Albuca bracteata</i> , <i>Ananas comosus</i> , <i>Brachypodium distachyon</i> , <i>Carex duriuscula</i> subsp. <i>rigescens</i> , <i>Dichanthelium oligosanthes</i> , <i>Dorcocheras hygrometricum</i> , <i>Eleusine indica</i> , <i>Nicotiana benthamiana</i> , <i>Nicotiana sylvestris</i> , <i>Oryza sativa</i> subsp. <i>japonica</i> , <i>Panicum miliaceum</i> , <i>Pennisetum americanum</i> , <i>Phoenix dactylifera</i> , <i>Setaria italica</i> , <i>Sorghum bicolor</i> , <i>Trema orientale</i> , <i>Triticum aestivum</i> , <i>Zea mays</i> Species of your interest not listed? Contact us

Application example



Recommend incubation for 1 hr at room temperature in 5% non-fat dry milk in phosphate-buffer saline with 0.5% Tween-80 (PBST). Figure shows plant leaf extracts or wheat germ extract (5 µl of the supernatant of 50 mg liquid nitrogen powdered tissue/100 µl 2X SDS Laemmli buffer containing protease inhibitor crushed with a plastic pestle in a microfuge tube and centrifuged for 10 min at 4°C). Image shown is using Agrisera Anti-rabbit HRP (1/30,000) for 1 hr at RT in 5% non-fat dry milk in phosphate-buffer saline with 0.5% Tween-80 (PBST) and using Agrisera Ultra Bright substrate and exposed for 2 seconds in a BioRad ChemDoc on high resolution. Blue star indicates eIF4A band.

Courtesy Dr. Karen Browning, The University of Texas at Austin, USA