



# SZABO SCANDIC

Part of Europa Biosite

## Produktinformation



Forschungsprodukte & Biochemikalien



Zellkultur & Verbrauchsmaterial



Diagnostik & molekulare Diagnostik



Laborgeräte & Service

Weitere Information auf den folgenden Seiten!  
See the following pages for more information!



### Lieferung & Zahlungsart

siehe unsere [Liefer- und Versandbedingungen](#)

### Zuschläge

- Mindermengenzuschlag
- Trockeneiszuschlag
- Gefahrgutzuschlag
- Expressversand

### SZABO-SCANDIC HandelsgmbH

Quellenstraße 110, A-1100 Wien

T. +43(0)1 489 3961-0

F. +43(0)1 489 3961-7

[mail@szabo-scandic.com](mailto:mail@szabo-scandic.com)

[www.szabo-scandic.com](http://www.szabo-scandic.com)

[linkedin.com/company/szaboscandic](https://www.linkedin.com/company/szaboscandic) 

# Agrisera

This product is for research use only (not for diagnostic or therapeutic use)

contact: [support@agrisera.com](mailto:support@agrisera.com)

Agrisera AB | Box 57 | SE-91121 Vännäs | Sweden | +46 (0)935 33 000 | [www.agrisera.com](http://www.agrisera.com)

Product no **AS19 4257**

## TROL | Thylakoid rhodanese-like protein

### Product information

<b>Immunogen</b>	KLH-conjugated peptide derived from <i>Arabidopsis thaliana</i> TROL (thylakoid rhodanese-like protein) protein sequence, UniProt: <a href="#">Q9M158</a> , TAIR: <a href="#">AT4G01050</a>
<b>Host</b>	Rabbit
<b>Clonality</b>	Polyclonal
<b>Purity</b>	Serum
<b>Format</b>	Lyophilized
<b>Quantity</b>	50 µl
<b>Reconstitution</b>	For reconstitution add 50 µl, of sterile water.
<b>Storage</b>	Lyophilized antibody can be stored at -20°C. Once reconstituted make aliquots to avoid repeated freeze-thaw cycles. Please, remember to spin tubes briefly prior to opening them to avoid any losses that might occur from lyophilized material adhering to the cap or sides of the tubes.

### Application information

<b>Recommended dilution</b>	1: 1000 - 1 : 3000 (WB)
<b>Expected   apparent MW</b>	55-60 kDa
<b>Confirmed reactivity</b>	<i>Arabidopsis thaliana</i> , <i>Nicotiana tabacum</i> , <i>Pisum sativum</i>
<b>Predicted reactivity</b>	<i>Brassica rapa</i> , <i>Eutrema salsugineum</i> Species of your interest not listed? <a href="#">Contact us</a>
<b>Not reactive in</b>	No confirmed exceptions from predicted reactivity are currently known
<b>Additional information</b>	<p><b>TROL protein can be used as a chloroplast dual-localization marker:</b> for the thylakoids (the major portion of the protein) and the chloroplastic inner envelope. Since the envelopes make a very small portion of the total membranes, the envelope form of TROL is detectable only when isolated envelopes are applied.</p> <p>For <a href="#">AgriseraECLBright</a> and Agrisera matching secondary antibodies goat anti-rabbit HRP conjugated, dilution 1: 25 000 1h/RT incubation (<a href="#">AS09 602</a>), anti-TROL antibodies can be used in dilution of 1:3000.</p> <p>Recommendation: 2 µg chlorophyll/well. With increased protein or chlorophyll load/well background bands may be detected. Check <a href="#">here</a>. For high resolution images, please visit the specific product page at <a href="http://www.agrisera.com">www.agrisera.com</a></p>
<b>Selected references</b>	<a href="#">Vojta</a> and Fulgosi (2019). Topology of TROL protein in thylakoid membranes of <i>Arabidopsis thaliana</i> . <i>Physiologia Plantarum</i> , Special Issue on: "Photosynthesis". DOI: 10.1111/ppl.12927

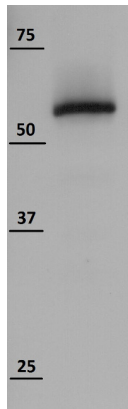
#### Application example

# Agrisera

This product is **for research use only** (not for diagnostic or therapeutic use)

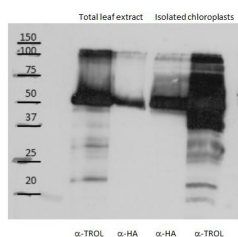
contact: [support@agrisera.com](mailto:support@agrisera.com)

Agrisera AB | Box 57 | SE-91121 Vännäs | Sweden | +46 (0)935 33 000 | [www.agrisera.com](http://www.agrisera.com)



Western blot on *Arabidopsis thaliana* chloroplasts (2 µg of chlorophyll) using anti-TROL antibodies: Chloroplasts were isolated from 5 week old *Arabidopsis thaliana* by mixing and filtering through 1-layer Miracloth filter and 4-layers of gauze. Chloroplasts were isolated in 330 mM Sorbitol, 20 mM Tris/HCl pH 8.4, 5 mM EDTA, 10 mM Na<sub>2</sub>CO<sub>3</sub>, 0.1% BSA and washed twice in the same buffer and pelleted at 1000g for 5 min at 4 °C. Chlorophyll concentration was determined and sample corresponding to 2 µg chlorophyll was separated by 12 % SDS-PAGE. After wet Western transfer for 1h15min on nitrocellulose membrane (0.45µm WC), blot was blocked with 5% milk for 3 times for 10 min at RT with agitation. Blot was incubated in the anti-TROL primary antibody at a dilution of 1:2000 at 4 °C/ON with agitation, in PBS buffer containing 1%Tween 20 and 5% milk. The antibody solution was decanted and the blot was rinsed briefly, then washed 3 times for 10 min in the same buffer at RT with agitation. Blot was incubated in anti-rabbit IgG horse radish peroxidase conjugate diluted to 1:50 000 in PBS buffer containing 1%Tween 20 and 5% milk for 1h/RT with agitation. The blot was washed 2 times for 10 min in PBS buffer containing 1% Tween 20 and developed using 1 ml 1.13 mM luminol (Alfa Aesar) solution in 0.1M Tris(HCl) pH 8.6, 100 µl 6.7 mM p-hydroxy coumaric acid (Sigma) in DMSO and 0.3 µl 35% H<sub>2</sub>O<sub>2</sub> (Kemika). ECL results was analysed by 3-minute exposure on X-ray films.

Courtesy of Dr. Lea Vojta and Dr. Hrvoje Fulgosi, Laboratory for Molecular Plant Biology and Biotechnology, Division of Molecular Biology, Institute Ruđer Bošković, Croatia



Western blot on TROL-overexpressing *Arabidopsis thaliana* line using anti-TROL antibodies: TROL overexpression line was constructed by transformation of knock-out *Arabidopsis thaliana* plants by plasmid vector pH7WG2.0 containing TROL-HA-FLAG construct. Total leaf extract from *Arabidopsis thaliana* corresponding to 20 mg of wet leaf tissue and isolated chloroplasts corresponding to 25 µg of chlorophyll, were loaded on 15 % SDS-PAGE. Western transfer was performed for 1 hour at 200 mA (wet blot). Membrane was immunodecorated with anti-TROL (1:2000) and anti-HA (1:1000) primary antibodies overnight at 4 °C. As secondary antibody, anti-rabbit IgG-HRP conjugate (1:50000) was used for anti-TROL and anti-rat IgG-HRP conjugate (1:30000) for anti-HA. Detection was performed using ECL and exposure on X-ray film.

Courtesy of Dr. Lea Vojta, Laboratory for Molecular Plant Biology and Biotechnology, Division of Molecular Biology, Institute Ruđer Bošković, Croatia