



# SZABO SCANDIC

Part of Europa Biosite

## Produktinformation



Forschungsprodukte & Biochemikalien



Zellkultur & Verbrauchsmaterial



Diagnostik & molekulare Diagnostik



Laborgeräte & Service

Weitere Information auf den folgenden Seiten!  
See the following pages for more information!



### Lieferung & Zahlungsart

siehe unsere [Liefer- und Versandbedingungen](#)

### Zuschläge

- Mindermengenzuschlag
- Trockeneiszuschlag
- Gefahrgutzuschlag
- Expressversand

### SZABO-SCANDIC HandelsgmbH

Quellenstraße 110, A-1100 Wien

T. +43(0)1 489 3961-0

F. +43(0)1 489 3961-7

[mail@szabo-scandic.com](mailto:mail@szabo-scandic.com)

[www.szabo-scandic.com](http://www.szabo-scandic.com)

[linkedin.com/company/szaboscandic](https://www.linkedin.com/company/szaboscandic) 

Technically  
Speaking

**CEDARLANE**<sup>®</sup>  
[www.cedarlanelabs.com](http://www.cedarlanelabs.com)



Conveniently Delivering You Today's Innovations  
for the Science of Tomorrow™

**Anti-Salmonid Ig (H chain)  
Monoclonal Antibody**

Catalogue#	Format	Size	Concentration	Isotype Control
<b>CLF004</b>	Supernatant	0.5 mL	N/A	CLCMG2A00
<b>CLF004AP</b>	Purified	250 µg	1.0 mg/ml	CLCMG2A00
<b>CLF004HP</b>	HRPO	100 µg	1.0 mg/ml	N/A
<b>CLF004ALP</b>	Alk. Phos.	100 µg	1.0 mg/ml	N/A
<b>CLF004F</b>	FITC	100 µg	0.1 mg/ml	CLCMG2A01

Isotype: Mouse IgG2a

**DESCRIPTION:**

The anti-salmonid Ig (H chain) monoclonal antibody can be used to indirectly detect a generalized or pathogen-specific increase in immunoglobulin level. This antibody recognizes the immunoglobulin heavy chain found in all Salmonid species (*Salmo*, *Oncorhynchus* and *Salvelinus*).

This antibody can be used as a detection reagent for fish infection by either detecting a generalized increase in fish immunoglobulin level or by detecting specific antibody. For specific antibody detection, known infectious agents are used as the antigen in an ELISA assay, followed by samples of infected fish serum and then the anti-salmonid Ig monoclonal antibody. See ELISA protocol below.

This antibody can be used in ELISA, Western blots and immunofluorescence (FACS).

**PRESENTATION:**

**Supernatant:** Integra bioreactor concentrated culture supernatant in 40% glycerol.

**Purified:** Purified Ig buffered in PBS and 0.02% NaN<sub>3</sub>. (PEG purified from Integra bioreactor supernatant).

**HRPO:** Horseradish Peroxidase conjugated Ig buffered in PBS, 0.01% (w/v) Gentamicin sulfate and EIA grade BSA as a stabilizing protein to bring total protein concentration to 10 mg/ml. Antibody is provided lyophilized and can be reconstituted to 1 mg/ml with DI water.

**Alk. Phos:** Alkaline Phosphatase conjugated Ig buffered in TBS, 0.01% NaN<sub>3</sub>, 50% Glycerol and EIA grade BSA as a stabilizing protein to bring total protein concentration to 10 mg/ml.

**FITC:** FITC conjugated Ig buffered in PBS, 0.02% NaN<sub>3</sub> and EIA grade BSA as a stabilizing protein to bring total protein concentration to 10 mg/ml.

**STORAGE/STABILITY:**

**Supernatant, Purified and FITC:** Store at +4°C. For long term storage, aliquot and freeze unused portion at -20°C in volumes appropriate for single usage. Avoid freeze/thaw cycles.

**Alkaline Phosphatase:** Store at +4°C for extended storage. DO NOT FREEZE.

**HRPO:** Store at -20°C.

*Continued Overleaf....*

Visit our website for your local distributor.

**CEDARLANE**<sup>®</sup>



[www.cedarlanelabs.com](http://www.cedarlanelabs.com)

An ISO 9001:2015 and ISO 13485:2016  
registered company.

**In CANADA: Toll Free: 1-800-268-5058**

4410 Paletta Court, Burlington, ON L7L 5R2 ph: (289) 288-0001, fax: (289) 288-0020  
e-mail: [general@cedarlanelabs.com](mailto:general@cedarlanelabs.com)

**In the USA: Toll Free: 1-800-721-1644**

1210 Turrentine Street, Burlington, NC 27215 ph: (336) 513-5135, fax: (336) 513-5138  
e-mail: [service@cedarlanelabs.com](mailto:service@cedarlanelabs.com)

**SPECIFICATIONS:**

Clone: IPA5F12

Hybridoma Production:

Immunogen: affinity purified Rainbow trout and Atlantic salmon heavy and light chain immunoglobulin

Recipient Animal: BALB/c female mice

Fusion Partner: X63Ag8.653 myeloma cells

Specificity: Salmonid Ig (H chain)

**APPLICATIONS:**

In ELISA and Western blot assays, the recommended starting dilutions are 1/250 - 1/1000.

**TEST RESULTS:**

Tissue Distribution by Flow Cytometry Analysis:

Cells: *Salmo salar* splenocytes

Cell Concentration: 1 x 10<sup>6</sup> cells per tests

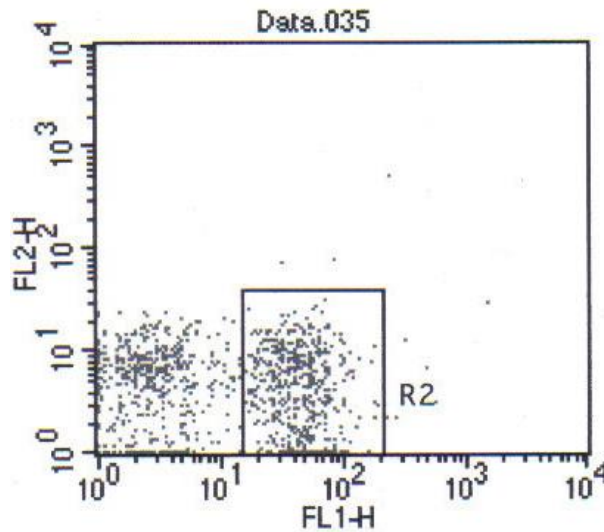
Antibody Concentration Used: 1:200 dilution

Cell Source

*Salmo salar* splenocytes

Percentage of cells stained above control

50.04%



**N.B. Appropriate control samples should always be included in any labeling studies.**

**\* For optimal results in various applications, it is recommended that each investigator determine dilutions appropriate for individual use.**

**FOR RESEARCH USE ONLY**

® is a registered trademark of Cedarlane