



SZABO SCANDIC

Part of Europa Biosite

Produktinformation



Forschungsprodukte & Biochemikalien



Zellkultur & Verbrauchsmaterial



Diagnostik & molekulare Diagnostik



Laborgeräte & Service

Weitere Information auf den folgenden Seiten!
See the following pages for more information!



Lieferung & Zahlungsart

siehe unsere [Liefer- und Versandbedingungen](#)

Zuschläge

- Mindermengenzuschlag
- Trockeneiszuschlag
- Gefahrgutzuschlag
- Expressversand

SZABO-SCANDIC HandelsgmbH

Quellenstraße 110, A-1100 Wien

T. +43(0)1 489 3961-0

F. +43(0)1 489 3961-7

mail@szabo-scandic.com

www.szabo-scandic.com

[linkedin.com/company/szaboscandic](https://www.linkedin.com/company/szaboscandic) 

Technically
Speaking

CEDARLANE[®] 
www.cedarlanelabs.com

Conveniently Delivering You Today's Innovations
for the Science of Tomorrow™

**Anti-Human HLA-ABC
Monoclonal Antibody**

| Catalogue# | Format | Size | Concentration | Isotype Control |
|-------------|------------------------------|--------|---------------|-----------------|
| CLHLA-01A | Ascites | 0.5 ml | N/A | CLCMG2A00 |
| CLHLA-01AP | Purified | 500µg | 1.0 mg/ml | CLCMG2A00 |
| CLHLA-01B | Biotin | 100µg | 0.1 mg/ml | CLCMG2A15 |
| CLHLA-01F | FITC | 100µg | 0.1 mg/ml | CLCMG2A01 |
| CLHLA-01NA | No Azide | 1mg | 1.0 mg/ml | CLCMG2A00 |
| CLHLA-01PE | PE | 50µg | 0.1 mg/ml | CLCMG2A04 |
| CLHLA-01AF4 | Alexa Fluor [®] 488 | 100 µg | 0.1 mg/ml | N/A |
| CLHLA-01AF6 | Alexa Fluor [®] 647 | 100 µg | 0.1 mg/ml | N/A |
| CLHLA-01AF7 | Alexa Fluor [®] 700 | 100 µg | 0.1 mg/ml | N/A |

Alexa Fluor[®] is a registered trademark of Life Technologies Corporation.

Ig Class: Mouse IgG_{2a}

DESCRIPTION:

Cedarlane's anti-human HLA-ABC monoclonal antibody recognizes an epitope common among 43 kDa chains of the HLA-ABC antigens. These antigens appear on virtually every human nucleated cell. This antibody is suitable as a positive control for HLA tissue typing and crossmatching.

Applications: flow cytometry, complement dependent cytotoxicity and functional assays.

PRESENTATION:

Ascites: 0.5 ml and 1 ml Lyophilized.

Purified: Purified IgG buffered in PBS and 0.02% NaN₃. (Purified from ascitic fluid via Protein G Chromatography). For maximum recovery of contents, spin down tube before use.

No Azide: 1 mg purified Ig buffered in PBS, **no preservative**, 0.2 µm filtered.

Biotin, FITC, PE, AF488, AF647 and AF700: Biotin/FITC/PE/AF488/AF647/AF700 conjugated IgG buffered in PBS, 0.02% NaN₃ and EIA grade BSA as a stabilizing protein to bring total protein concentration to 4-5 mg/ml.

STORAGE/STABILITY:

For all formats, store at 4°C. **DO NOT FREEZE PE, AF488, AF647 and AF700** conjugate. For long term storage (**Ascites, Purified, Biotin and FITC**), aliquot and freeze unused portion at -20°C in volumes appropriate for single usage. Avoid freeze/thaw cycles.

Continued Overleaf.....

Visit our website for your local distributor.

CEDARLANE[®] 

www.cedarlanelabs.com

An ISO 9001:2015 and ISO 13485:2016
registered company.

In CANADA: Toll Free: 1-800-268-5058

4410 Paletta Court, Burlington, ON L7L 5R2 ph: (289) 288-0001, fax: (289) 288-0020
e-mail: general@cedarlanelabs.com

In the USA: Toll Free: 1-800-721-1644

1210 Turrentine Street, Burlington, NC 27215 ph: (336) 513-5135, fax: (336) 513-5138
e-mail: service@cedarlanelabs.com

SPECIFICATIONS:

Clone: W6/32

Hybridoma Production:

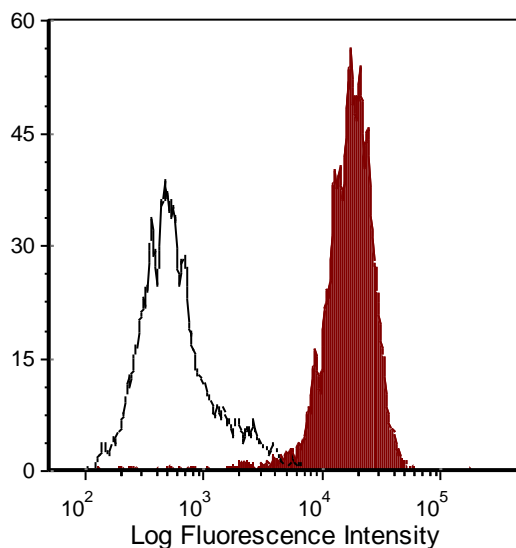
Immunization: Immunogen: Purified membrane of human tonsil cells
Donor: BALB/c spleen
Fusion Partner: NS1/1-Ag4.1

Specificity: Human HLA-ABC

FLOW CYTOMETRY ANALYSIS:

Tissue Distribution by Flow Cytometry Analysis:

Cell Concentration: 1×10^6 cells per test
Antibody Concentration Used: $1 \mu\text{g}/10^6$ cells
Percentage of cells stained above control: 98.0%



Human peripheral blood lymphocytes were stained with anti-HLA-ABC (clone: W6/32) (filled histogram) or Mouse IgG2a isotype control (open histogram).

N.B. Appropriate control samples should always be included in any labelling studies.

*** For optimal results in various applications, it is recommended that each investigator determine dilutions appropriate for individual use.**

REFERENCES:

- 1) Barnstable, C.J. et al. (1978) Cell. **14**:9-20
- 2) Milstein, C. et al. (1979) Cell Biol. Int. Reports. **3**:1-16
- 3) Heike, M. et al. (1996) Journal of Immunol. **156**:2205-2213
- 4) Pettersen, R.D. et al. (1996) Journal of Immunol. **156**:1415-1424
- 5) King, A. et al. (1996) Journal of Immunol. **156**:2068-2076
- 6) Barber, L.D. et al. (1996) Journal of Immunol. **156**:3275-3284
- 7) Min, W. et al. (1996) Journal of Immunol. **156**:3174-3183
- 8) Neisig, A. et al. (1996) Journal of Immunol. **156**:3196-3206
- 9) Bregenholt, S. et al. (1996) Journal of Immunol. **157**:993-999
- 10) Polyak, S. et al. (1997) Journal of Immunol. **159**:2177-2188

FOR RESEARCH USE ONLY

® is a Registered Trademark of Cedarlane.