



# SZABO SCANDIC

Part of Europa Biosite

## Produktinformation



Forschungsprodukte & Biochemikalien



Zellkultur & Verbrauchsmaterial



Diagnostik & molekulare Diagnostik



Laborgeräte & Service

Weitere Information auf den folgenden Seiten!  
See the following pages for more information!



### Lieferung & Zahlungsart

siehe unsere [Liefer- und Versandbedingungen](#)

### Zuschläge

- Mindermengenzuschlag
- Trockeneiszuschlag
- Gefahrgutzuschlag
- Expressversand

### SZABO-SCANDIC HandelsgmbH

Quellenstraße 110, A-1100 Wien

T. +43(0)1 489 3961-0

F. +43(0)1 489 3961-7

[mail@szabo-scandic.com](mailto:mail@szabo-scandic.com)

[www.szabo-scandic.com](http://www.szabo-scandic.com)

[linkedin.com/company/szaboscandic](https://www.linkedin.com/company/szaboscandic) 

Technically  
Speaking

**CEDARLANE**<sup>®</sup>  
[www.cedarlanelabs.com](http://www.cedarlanelabs.com)



Conveniently Delivering You Today's Innovations  
for the Science of Tomorrow™

**Anti-Human HLA-ABC  
Monoclonal Antibody**

Catalogue#	Format	Size	Concentration	Isotype Control
CLHLA-01A	Ascites	0.5 ml	N/A	CLCMG2A00
CLHLA-01AP	Purified	500µg	1.0 mg/ml	CLCMG2A00
CLHLA-01B	Biotin	100µg	0.1 mg/ml	CLCMG2A15
CLHLA-01F	FITC	100µg	0.1 mg/ml	CLCMG2A01
CLHLA-01NA	No Azide	1mg	1.0 mg/ml	CLCMG2A00
CLHLA-01PE	PE	50µg	0.1 mg/ml	CLCMG2A04
CLHLA-01PE-CY7	PE-Cy7	100µg	0.1 mg/ml	CLCMG2A12
CLHLA-01AF4	Alexa Fluor <sup>®</sup> 488	100 µg	0.1 mg/ml	N/A
CLHLA-01AF6	Alexa Fluor <sup>®</sup> 647	100 µg	0.1 mg/ml	N/A
CLHLA-01AF7	Alexa Fluor <sup>®</sup> 700	100 µg	0.1 mg/ml	N/A

Alexa Fluor<sup>®</sup> is a registered trademark of Life Technologies Corporation.

Ig Class: Mouse IgG<sub>2a</sub>

**DESCRIPTION:**

Cedarlane's anti-human HLA-ABC monoclonal antibody recognizes an epitope common among 43 kDa chains of the HLA-ABC antigens. These antigens appear on virtually every human nucleated cell. This antibody is suitable as a positive control for HLA tissue typing and crossmatching.

Applications: flow cytometry, complement dependent cytotoxicity and functional assays.

**PRESENTATION:**

**Ascites:** 0.5 ml and 1 ml Lyophilized.

**Purified:** Purified IgG buffered in PBS and 0.02% NaN<sub>3</sub>. (Purified from ascitic fluid via Protein G Chromatography). For maximum recovery of contents, spin down tube before use.

**No Azide:** 1 mg purified Ig buffered in PBS, **no preservative**, 0.2 µm filtered.

**Biotin, FITC, PE, PE-Cy7, AF488, AF647 and AF700:** Biotin/FITC/PE/AF488/AF647/AF700 conjugated IgG buffered in PBS, 0.02% NaN<sub>3</sub> and EIA grade BSA as a stabilizing protein to bring total protein concentration to 4-5 mg/ml.

**STORAGE/STABILITY:**

For all formats, store at 4°C. **DO NOT FREEZE PE, PE-Cy7, AF488, AF647 and AF700** conjugate. For long term storage (**Ascites, Purified, Biotin and FITC**), aliquot and freeze unused portion at -20°C in volumes appropriate for single usage. Avoid freeze/thaw cycles.

*Continued.....*

Visit our website for your local distributor.

**CEDARLANE**<sup>®</sup>



[www.cedarlanelabs.com](http://www.cedarlanelabs.com)

An ISO 9001:2015 and ISO 13485:2016  
registered company.

In CANADA: Toll Free: 1-800-268-5058

4410 Paletta Court, Burlington, ON L7L 5R2 ph: (289) 288-0001, fax: (289) 288-0020  
e-mail: [general@cedarlanelabs.com](mailto:general@cedarlanelabs.com)

In the USA: Toll Free: 1-800-721-1644

1210 Turrentine Street, Burlington, NC 27215 ph: (336) 513-5135, fax: (336) 513-5138  
e-mail: [service@cedarlanelabs.com](mailto:service@cedarlanelabs.com)

## **SPECIFICATIONS:**

Clone: W6/32

### Hybridoma Production:

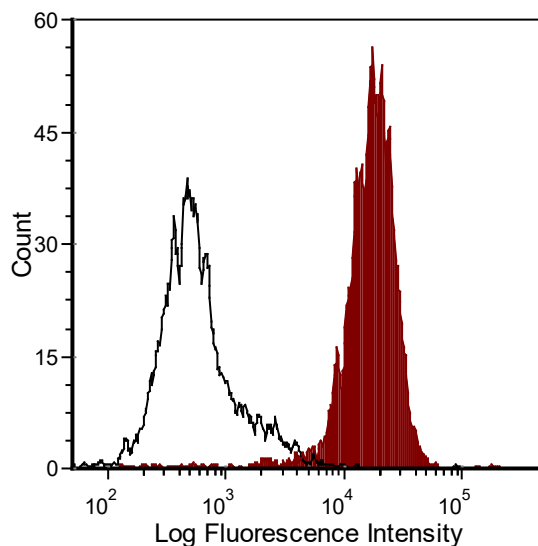
Immunization: Immunogen: Purified membrane of human tonsil cells  
Donor: BALB/c spleen  
Fusion Partner: NS1/1-Ag4.1

Specificity: Human HLA-ABC

## **FLOW CYTOMETRY ANALYSIS:**

### Tissue Distribution by Flow Cytometry Analysis:

Cell Concentration:  $1 \times 10^6$  cells per test  
Antibody Concentration Used:  $1 \mu\text{g}/10^6$  cells  
Percentage of cells stained above control: 98.0%



Human peripheral blood lymphocytes were stained with anti-HLA-ABC (clone: W6/32) (filled histogram) or Mouse IgG2a isotype control (open histogram).

**N.B. Appropriate control samples should always be included in any labelling studies.**

**\* For optimal results in various applications, it is recommended that each investigator determine dilutions appropriate for individual use.**

## **REFERENCES:**

- 1) Barnstable, C.J. et al. (1978) Cell. **14**:9-20
- 2) Milstein, C. et al. (1979) Cell Biol. Int. Reports. **3**:1-16
- 3) Heike, M. et al. (1996) Journal of Immunol. **156**:2205-2213
- 4) Pettersen, R.D. et al. (1996) Journal of Immunol. **156**:1415-1424
- 5) King, A. et al. (1996) Journal of Immunol. **156**:2068-2076
- 6) Barber, L.D. et al. (1996) Journal of Immunol. **156**:3275-3284
- 7) Min, W. et al. (1996) Journal of Immunol. **156**:3174-3183
- 8) Neisig, A. et al. (1996) Journal of Immunol. **156**:3196-3206
- 9) Bregenholt, S. et al. (1996) Journal of Immunol. **157**:993-999
- 10) Polyak, S. et al. (1997) Journal of Immunol. **159**:2177-2188

**FOR RESEARCH USE ONLY**

® is a Registered Trademark of Cedarlane.