



SZABO SCANDIC

Part of Europa Biosite

Produktinformation



Forschungsprodukte & Biochemikalien



Zellkultur & Verbrauchsmaterial



Diagnostik & molekulare Diagnostik



Laborgeräte & Service

Weitere Information auf den folgenden Seiten!
See the following pages for more information!



Lieferung & Zahlungsart

siehe unsere [Liefer- und Versandbedingungen](#)

Zuschläge

- Mindermengenzuschlag
- Trockeneiszuschlag
- Gefahrgutzuschlag
- Expressversand

SZABO-SCANDIC HandelsgmbH

Quellenstraße 110, A-1100 Wien

T. +43(0)1 489 3961-0

F. +43(0)1 489 3961-7

mail@szabo-scandic.com

www.szabo-scandic.com

[linkedin.com/company/szaboscandic](https://www.linkedin.com/company/szaboscandic) 



Place your order with CEDARLANE® or your local distributor.

Please contact CEDARLANE® for lot specific information.

**FITC Anti-Human HLA-DR
Monoclonal Antibody**

**CLHLA-03F
CLHLA-03F-3
LOT: 0331**

DESCRIPTION:

Cedarlane's FITC anti-human HLA-DR monoclonal antibody recognizes the HLA-DR (MHC class II) antigen.

Applications include: flow cytometry, cryostat sections, Paraffin-embedded sections

PRESENTATION:

100µg (CLHLA-03F) or 300µg (CLHLA-03F-3) purified Ig buffered in PBS with 0.02% NaN₃ and EIA grade BSA as a stabilizing protein to bring total protein concentration to 4-5 mg/ml.

STORAGE/STABILITY:

Store at 4°C. For long term storage, aliquot and freeze unused portion at -20°C in volumes appropriate for single usage. Avoid repeated freeze/thaw cycles as this may denature the antibody.

For more information or to place an order please contact...

CEDARLANE®
LABORATORIES LIMITED



toll free: 1-800-268-5058
in North America

phone: (905) 878-8891 • fax: (905) 878-7800

5516 - 8th Line, R.R.#2, Hornby, Ontario, CANADA L0P 1E0

or visit our website for a list of our international distributors including contact information

website: www.cedarlanelabs.com • e-mail: info@cedarlanelabs.com

SPECIFICATIONS:

Clone: YD1/63.4.10

Hybridoma Production:

Immunization: Immunogen: DAUDI cells

Donor: immunized DA rat spleen cells

Fusion Partner: Y3 Ag1.2.3 rat myeloma

Specificity: HLA-DR antigen

Ig Class: Rat IgG_{2a}

Format: FITC conjugated Ig buffered in PBS, 0.02% NaN₃ and EIA grade BSA as a stabilizing protein to bring total protein concentration to 4-5 mg/ml. (Purified from ascites via Protein G Chromatography)

Antibody Concentration: 0.1 mg/ml

FLOW CYTOMETRY ANALYSIS:**Method:**

1. Prepare a cell suspension in media A. For cell preparations, deplete the red blood cell population with Lympholyte[®]-H (CL5010) cell separation medium.
2. Wash 2 times.
3. Resuspend the cells to a concentration of 2×10^7 cells/ml in media A. Add 50 μ l of this suspension to each tube (each tube will then contain 1×10^6 cells, representing 1 test).
4. To each tube, add 50 μ l of a 0.2 - 0.1 μ g dilution of **CLHLA-03F** or **CLHLA-03F-3** per 10^6 cells.
5. Vortex the tubes to ensure thorough mixing of antibody and cells.
6. Incubate the tubes for 30 minutes at 4°C.
10. Wash 2 times at 4°C.
11. Resuspend the cell pellet in 50 μ l ice cold media B.
12. Transfer to suitable tubes for flow cytometric analysis containing 15 μ l of propidium iodide at 0.5 mg/ml in PBS. This stains dead cells by intercalating in DNA.

Media:

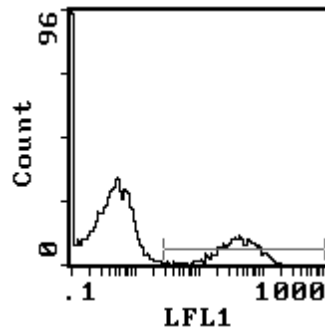
- A. Phosphate buffered saline (pH 7.2) + 5% normal serum of host species + sodium azide (100 μ l of 2M sodium azide in 100 mls).
- B. Phosphate buffered saline (pH 7.2) + 0.5% Bovine serum albumin + sodium azide (100 μ l of 2M sodium azide in 100 mls).

Results:Tissue Distribution by Flow Cytometry Analysis:

Cell Concentration : 1×10^6 cells per test

Antibody Concentration Used: 0.1 μ g/ 10^6 cells

Isotypic Control: FITC Rat IgG_{2a} (CLCR2a01)



Cell Source: Peripheral Blood Lymphocytes
Percentage of cells stained above control: 14.6%

N.B. Appropriate control samples should always be included in any labeling studies.

*** For optimal results in varHLA-DRFIT@ns, it is recommended that each investigator determine dilutions appropriate for individual use.**

REFERENCES:

1. Janossy, G., Tidman, N., Crawford, D., Papageorgiou, E. S., Prentice, H. G., Francis, G., Bradstock, K. F., McConnell, I., Secher, D., and Milstein, C. (1980).
Protides of Biol. Fluids 28: 523-528

FOR RESEARCH USE ONLY

® is a Registered Trademark of Cedarlane Laboratories Limited.