



SZABO SCANDIC

Part of Europa Biosite

Produktinformation



Forschungsprodukte & Biochemikalien



Zellkultur & Verbrauchsmaterial



Diagnostik & molekulare Diagnostik



Laborgeräte & Service

Weitere Information auf den folgenden Seiten!
See the following pages for more information!



Lieferung & Zahlungsart

siehe unsere [Liefer- und Versandbedingungen](#)

Zuschläge

- Mindermengenzuschlag
- Trockeneiszuschlag
- Gefahrgutzuschlag
- Expressversand

SZABO-SCANDIC HandelsgmbH

Quellenstraße 110, A-1100 Wien

T. +43(0)1 489 3961-0

F. +43(0)1 489 3961-7

mail@szabo-scandic.com

www.szabo-scandic.com

[linkedin.com/company/szaboscandic](https://www.linkedin.com/company/szaboscandic) 

GFH06

Recombinant Human Exodus-2 / CCL21

Description

Exodus-2, also known as CCL21, is a chemokine that is strongly produced in the human lymph nodes and spleen. Exodus-2 signals through the chemokine receptor CCR7 to regulate thymocyte and activated T cell migration, but is not chemotactic for monocytes. Exodus-2 also mediates the homing of lymphocytes to the lymphatic system. Human and mouse Exodus-2 share > 85% amino acid identity.

Length	111 aa
Molecular Weight	12.3 kDa
Source	E. coli
Accession Number	O00585
Purity	≥95% determined by reducing and non-reducing SDS-PAGE

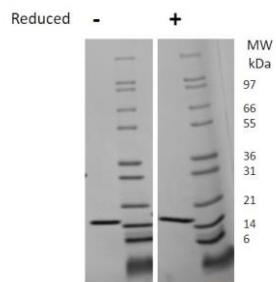
Specifications

Alternative Names	CCL21, 6Ckine, secondary lymphoid tissue chemokine, SLC
Biological Activity	Activity to be determined
Endotoxin Level	≤1.00 EU/μg as measured by kinetic LAL
Formulation	Lyophilized from a sterile (0.2 micron) filtered aqueous solution containing 0.1% Trifluoroacetic Acid (TFA)
AA Sequence	SDGGAQDCCL KYSQRKIPAK VVRSYRKQEP SLGCSIPAIL FLPRKRSQAE LCADPKELWV QQLMQHLDKT PSPQKPAQGC RKDRGASKTG KKGKGSKGCK RTERSQTPKG P

Preparation and Storage

Reconstitution	Centrifuge vial before opening. When reconstituting the product, gently pipet and wash down the sides of the vial to ensure full recovery of the protein into solution. It is recommended to reconstitute the lyophilized product with sterile water at 0.1 mg/ml, which can be further diluted into other aqueous solutions.
Stability and Storage	12 months from date of receipt when stored at -20°C to -80°C as supplied. 1 month when stored at 4°C after reconstituting as directed. 3 months when stored at -20°C to -80°C after reconstituting as directed.

Data



Non-reducing (-) and reducing (+) conditions in a 4 - 20% Tris-Glycine gel stained with Coomassie Blue. 1 μg of protein was loaded in each lane. Human Exodus-2 has a predicted Mw of 12.3 kDa, but runs approximately 16 kDa on SDS-PAGE.