



# SZABO SCANDIC

Part of Europa Biosite

## Produktinformation



Forschungsprodukte & Biochemikalien



Zellkultur & Verbrauchsmaterial



Diagnostik & molekulare Diagnostik



Laborgeräte & Service

Weitere Information auf den folgenden Seiten!  
See the following pages for more information!



### Lieferung & Zahlungsart

siehe unsere [Liefer- und Versandbedingungen](#)

### Zuschläge

- Mindermengenzuschlag
- Trockeneiszuschlag
- Gefahrgutzuschlag
- Expressversand

### SZABO-SCANDIC HandelsgmbH

Quellenstraße 110, A-1100 Wien

T. +43(0)1 489 3961-0

F. +43(0)1 489 3961-7

[mail@szabo-scandic.com](mailto:mail@szabo-scandic.com)

[www.szabo-scandic.com](http://www.szabo-scandic.com)

[linkedin.com/company/szaboscandic](https://www.linkedin.com/company/szaboscandic) 

## GFH10AF Recombinant Human IL-6 (Animal-Free)

### Description

Interleukin-6 (IL-6) is a cytokine that is expressed by T cells, macrophages, and muscle cells. IL-6 acts to stimulate an immune response upon infection or trauma. IL-6 has both pro-inflammatory and anti-inflammatory functions and signals through the cell-surface type 1 cytokine receptor complex containing the IL-6Ra and gp130 chains. Human IL-6 is active on mouse and rat cells.

This product is produced with no animal derived raw products. All processing and handling employs animal free equipment and animal free protocols.

<b>Length</b>	185 aa
<b>Molecular Weight</b>	21 kDa
<b>Source</b>	E. coli
<b>Accession Number</b>	P05231
<b>Purity</b>	≥95% determined by reducing and non-reducing SDS-PAGE

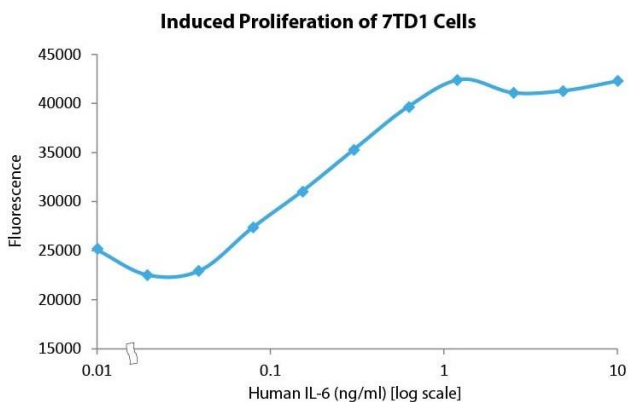
### Specifications

<b>Alternative Names</b>	Interleukin-6, interleukin 6, IL6, IL 6, IFN-β2, interferon β 2, B-cell differentiation factor, BSF-2, HSF, MGI-2, CTL differentiation factor
<b>Biological Activity</b>	Human IL-6 is fully biologically active when compared to standard. The activity is determined by the ability to induce 7TD1 cells proliferation and it is typically less than 250 pg/ml. This corresponds to an expected specific activity of $4 \times 10^6$ units/mg. The activity can also be determined by the ability to induce B9 cells proliferation and it is typically less than 25 pg/ml, for an expected specific activity of $4 \times 10^7$ units/mg.
<b>Endotoxin Level</b>	≤1.00 EU/μg as measured by kinetic LAL
<b>Formulation</b>	Lyophilized from a sterile (0.2 micron) filtered aqueous solution containing 10 mM sodium phosphate, pH 7.5
<b>AA Sequence</b>	MPVPPGEDSK DVAAPHRQPL TSSERIDKQI RYILDGISAL RKETCNKSNM CESSKEALAE>NNLNLPKMAE KDGCFQSGFN EETCLVKIIT GLLEFEVYLE YLQNRFESSE EQARAVQMST KVLIQFLQKK AKNLDAITTP DPTTNASLLT KLQAQNQLWQ DMTTHLILRS FKEFLQSSLR ALRQM

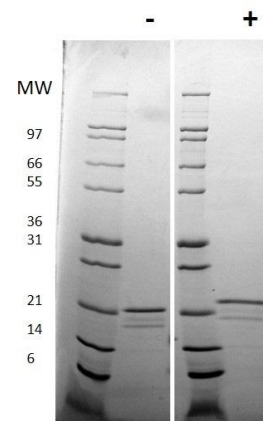
### Preparation and Storage

<b>Reconstitution</b>	Centrifuge vial before opening. When reconstituting the product, gently pipet and wash down the sides of the vial to ensure full recovery of the protein into solution. It is recommended to reconstitute the lyophilized product with sterile water at 0.1 mg/ml, which can be further diluted into other aqueous solutions.
<b>Stability and Storage</b>	12 months from date of receipt when stored at -20°C to -80°C as supplied. 1 month when stored at 4°C after reconstituting as directed. 3 months when stored at -20°C to -80°C after reconstituting as directed.

### Data



Induced proliferation of 7TD1 cells for Human IL-6. Cell proliferation was measured to calculate the ED50, which is as expected less than 250 pg/ml.



Non-reducing (-) and reducing (+) conditions in a 4 - 20% Tris-Glycine gel stained with Coomassie Blue. 1 μg of protein was loaded in each lane. Human IL-6 has a predicted Mw of 21 kDa.