



SZABO SCANDIC

Part of Europa Biosite

Produktinformation



Forschungsprodukte & Biochemikalien



Zellkultur & Verbrauchsmaterial



Diagnostik & molekulare Diagnostik



Laborgeräte & Service

Weitere Information auf den folgenden Seiten!
See the following pages for more information!



Lieferung & Zahlungsart

siehe unsere [Liefer- und Versandbedingungen](#)

Zuschläge

- Mindermengenzuschlag
- Trockeneiszuschlag
- Gefahrgutzuschlag
- Expressversand

SZABO-SCANDIC HandelsgmbH

Quellenstraße 110, A-1100 Wien

T. +43(0)1 489 3961-0

F. +43(0)1 489 3961-7

mail@szabo-scandic.com

www.szabo-scandic.com

[linkedin.com/company/szaboscandic](https://www.linkedin.com/company/szaboscandic) 

GFH13 Recombinant Human MCP-1 / CCL2

Description

Monocyte Chemotactic Protein 1 (MCP-1), also known as CCL2, is produced by injured or infected tissues. MCP-1 signals through the CCR2 and CCR4 G protein-coupled receptors to recruit memory T cells, monocytes, and dendritic cells to sites of inflammation.

Length	76 aa
Molecular Weight	8.7 kDa
Source	E. coli
Accession Number	P13500
Purity	≥95% determined by reducing and non-reducing SDS-PAGE

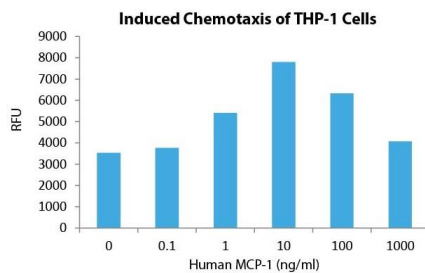
Specifications

Alternative Names	Monocyte Chemotactic Protein 1, CCL2, JE, MCAF
Biological Activity	Human MCP-1 is fully biologically active when compared to standard. The activity is determined by the ability to induce chemotaxis of THP-1 cells and it is typically less than 100 ng/ml.
Endotoxin Level	≤1.00 EU/μg as measured by kinetic LAL
Formulation	Lyophilized from a sterile (0.2 micron) filtered aqueous solution containing 0.1% Trifluoroacetic Acid (TFA)
AA Sequence	QPDAINAPVT CCYNFTNRKI SVQRLASYRR ITSSKCPKEA VIFKTIVAKE ICADPKQKWV QDSMDHLDKQ TQTPKT

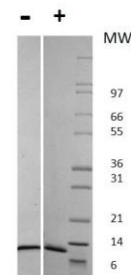
Preparation and Storage

Reconstitution	Centrifuge vial before opening. When reconstituting the product, gently pipet and wash down the sides of the vial to ensure full recovery of the protein into solution. It is recommended to reconstitute the lyophilized product with sterile water at 0.1 mg/ml, which can be further diluted into other aqueous solutions.
Stability and Storage	12 months from date of receipt when stored at -20°C to -80°C as supplied. 1 month when stored at 4°C after reconstituting as directed. 3 months when stored at -20°C to -80°C after reconstituting as directed.

Data



Induced chemotaxis of THP-1 cells assay for Human MCP-1. Cells that migrated were counted using a luminescent substrate. Migration over basal levels was reported in response to Human MCP-1 starting at 1 ng/ml.



Non-reducing (-) conditions in a 16% Tris-Glycine gel stained with Coomassie Blue. 6 μg of protein was loaded in each lane. Mouse LIF has a predicted Mw of 20 kDa.