



SZABO SCANDIC

Part of Europa Biosite

Produktinformation



Forschungsprodukte & Biochemikalien



Zellkultur & Verbrauchsmaterial



Diagnostik & molekulare Diagnostik



Laborgeräte & Service

Weitere Information auf den folgenden Seiten!
See the following pages for more information!



Lieferung & Zahlungsart

siehe unsere [Liefer- und Versandbedingungen](#)

Zuschläge

- Mindermengenzuschlag
- Trockeneiszuschlag
- Gefahrgutzuschlag
- Expressversand

SZABO-SCANDIC HandelsgmbH

Quellenstraße 110, A-1100 Wien

T. +43(0)1 489 3961-0

F. +43(0)1 489 3961-7

mail@szabo-scandic.com

www.szabo-scandic.com

[linkedin.com/company/szaboscandic](https://www.linkedin.com/company/szaboscandic) 

GFH130 Recombinant Human MCP-2 / CCL8

Description

Monocyte Chemotactic Protein 2 (MCP-2), also known as CCL8, is a cytokine that is important during allergic and inflammatory responses. MCP-2 activates mast cells, eosinophils, and basophils through the G protein-coupled chemokine receptors CCR1, CCR2B, and CCR5. MCP-2 signaling through the CCR5 receptor also functions as a natural inhibitor of the human immunodeficiency virus, type 1 (HIV-1).

| | |
|-------------------------|---|
| Length | 76 aa |
| Molecular Weight | 8.9 kDa |
| Source | E. coli |
| Accession Number | P80075 |
| Purity | ≥95% determined by reducing and non-reducing SDS-PAGE |

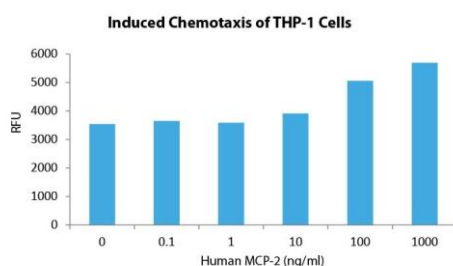
Specifications

| | |
|----------------------------|--|
| Alternative Names | Monocyte Chemotactic Protein 1, CCL2, JE, MCAF |
| Biological Activity | Human MCP-2 is fully biologically active when compared to standard. The activity is determined by the ability to induce chemotaxis of THP-1 cells. |
| Endotoxin Level | ≤1.00 EU/μg as measured by kinetic LAL |
| Formulation | Lyophilized from a sterile (0.2 micron) filtered aqueous solution containing 0.1% Trifluoroacetic Acid (TFA) |
| AA Sequence | QPDSVSIPIT CCFNVINRKI PIQRLESYTR ITNIQCPKEA VIFKTKRGKE VCADPKERWV RDSMKHLDQI FQNLKP |

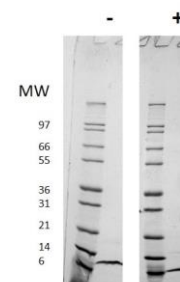
Preparation and Storage

| | |
|------------------------------|---|
| Reconstitution | Centrifuge vial before opening. When reconstituting the product, gently pipet and wash down the sides of the vial to ensure full recovery of the protein into solution. It is recommended to reconstitute the lyophilized product with sterile water at 0.1 mg/ml, which can be further diluted into other aqueous solutions. |
| Stability and Storage | 12 months from date of receipt when stored at -20°C to -80°C as supplied. 1 month when stored at 4°C after reconstituting as directed. 3 months when stored at -20°C to -80°C after reconstituting as directed. |

Data



Induced chemotaxis of THP-1 cells assay for Human MCP-2. Cells that migrated were counted using a luminescent substrate. Migration over basal levels was reported in response to Human MCP-2 starting at 100 ng/ml.



Non-reducing (-) and reducing (+) conditions in a 4 - 20% Tris-Glycine gel stained with Coomassie Blue. 1 μg of protein was loaded in each lane. Human MCP-2 has a predicted Mw of 8.9 kDa.