



SZABO SCANDIC

Part of Europa Biosite

Produktinformation



Forschungsprodukte & Biochemikalien



Zellkultur & Verbrauchsmaterial



Diagnostik & molekulare Diagnostik



Laborgeräte & Service

Weitere Information auf den folgenden Seiten!
See the following pages for more information!



Lieferung & Zahlungsart

siehe unsere [Liefer- und Versandbedingungen](#)

Zuschläge

- Mindermengenzuschlag
- Trockeneiszuschlag
- Gefahrgutzuschlag
- Expressversand

SZABO-SCANDIC HandelsgmbH

Quellenstraße 110, A-1100 Wien

T. +43(0)1 489 3961-0

F. +43(0)1 489 3961-7

mail@szabo-scandic.com

www.szabo-scandic.com

[linkedin.com/company/szaboscandic](https://www.linkedin.com/company/szaboscandic) 

GFH14 Recombinant Human IGF-2

Description

Insulin-like Growth Factor 2 (IGF-2) is an important fetal growth hormone made by theca cells during gestation. IGF-2 engages the IGF-1 receptor (IGF1R) to mediate embryonic growth. IGF-2 also binds the sink IGF-2 receptor (IGF2R) leading to IGF-2 degradation.

Length	67 aa
Molecular Weight	7.5 kDa
Source	E. coli
Accession Number	P01344
Purity	≥95% determined by reducing and non-reducing SDS-PAGE

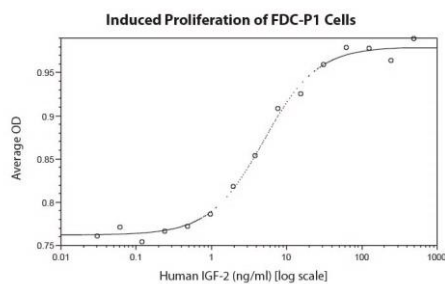
Specifications

Alternative Names	Insulin-like Growth Factor 2, somatomedin A, IGF-II
Biological Activity	Human IGF-2 is fully biologically active when compared to standard. The activity is determined by the ability to induce mouse FDC-P1 cells proliferation and it is typically less than 15 ng/ml. This corresponds to an expected specific activity of 6.7×10^4 units/mg.
Endotoxin Level	≤1.00 EU/μg as measured by kinetic LAL
Formulation	Lyophilized from a sterile (0.2 micron) filtered aqueous solution containing 0.1% Trifluoroacetic Acid (TFA)
AA Sequence	AYRPSETLCG GELVDTLQFV CGDRGFYFSR PASRVSRRSR GIVEECCFRS CDLALLELYC ATPAKSE

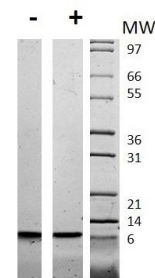
Preparation and Storage

Reconstitution	Centrifuge vial before opening. When reconstituting the product, gently pipet and wash down the sides of the vial to ensure full recovery of the protein into solution. It is recommended to reconstitute the lyophilized product with sterile water at 0.1 mg/ml, which can be further diluted into other aqueous solutions.
Stability and Storage	12 months from date of receipt when stored at -20°C to -80°C as supplied. 1 month when stored at 4°C after reconstituting as directed. 3 months when stored at -20°C to -80°C after reconstituting as directed.

Data



Induced proliferation of mouse FDC-P1 cells assay for Human IGF-2. Cell proliferation was measured to calculate the ED50, which is as expected less than 15 ng/ml.



Non-reducing (-) and reducing (+) conditions in a 4 - 20% Tris-Glycine gel stained with Coomassie Blue. 1 μg of protein was loaded in each lane. Human IGF-2 has a predicted Mw of 7.5 kDa.