



# SZABO SCANDIC

Part of Europa Biosite

## Produktinformation



Forschungsprodukte & Biochemikalien



Zellkultur & Verbrauchsmaterial



Diagnostik & molekulare Diagnostik



Laborgeräte & Service

Weitere Information auf den folgenden Seiten!  
See the following pages for more information!



### Lieferung & Zahlungsart

siehe unsere [Liefer- und Versandbedingungen](#)

### Zuschläge

- Mindermengenzuschlag
- Trockeneiszuschlag
- Gefahrgutzuschlag
- Expressversand

### SZABO-SCANDIC HandelsgmbH

Quellenstraße 110, A-1100 Wien

T. +43(0)1 489 3961-0

F. +43(0)1 489 3961-7

[mail@szabo-scandic.com](mailto:mail@szabo-scandic.com)

[www.szabo-scandic.com](http://www.szabo-scandic.com)

[linkedin.com/company/szaboscandic](https://www.linkedin.com/company/szaboscandic) 

## GFH144 Recombinant Human IL-16

### Description

Interleukin-16 (IL-16) is produced by CD4+ and CD8+ T cells and functions as a chemoattractant for lymphocytes, monocytes, eosinophils, dendritic cells, and Langerhans cells. Additionally, IL-16 upregulates the expression of the interleukin-2 receptor (CD25), modulates T lymphocyte growth, and suppresses the replication of the human immunodeficiency virus (HIV) and simian immunodeficiency viruses (SIV).

<b>Length</b>	130 aa
<b>Molecular Weight</b>	13.4 kDa
<b>Source</b>	E. coli
<b>Accession Number</b>	Q14005
<b>Purity</b>	≥95% determined by reducing and non-reducing SDS-PAGE

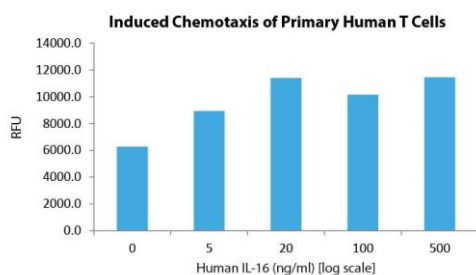
### Specifications

<b>Alternative Names</b>	Interleukin-16, interleukin 16, IL16, IL 16, lymphocyte chemoattractant factor, LCF, NIL16
<b>Biological Activity</b>	Human IL-16 is fully biologically active when compared to standard. The activity is determined by the ability to induce chemotaxis of primary human T cells by Human IL-16.
<b>Endotoxin Level</b>	≤1.00 EU/μg as measured by kinetic LAL
<b>Formulation</b>	Lyophilized from a sterile (0.2 micron) filtered aqueous solution containing 10 mM sodium phosphate, pH 7.5
<b>AA Sequence</b>	MPDLNSSTDS AASASAASDV SVESTAEATV CTVTLEKMSA GLGFSLEGGK GSLHGDKPLT INRIFKGAAS EQSETVQPGD EILQLGGTAM QGLTRFEAWN IKALPDGPV TIVIRRKSLQ SKETTAAGDS

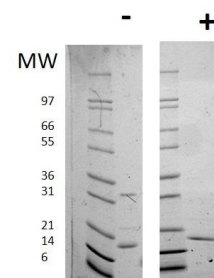
### Preparation and Storage

<b>Reconstitution</b>	Centrifuge vial before opening. When reconstituting the product, gently pipet and wash down the sides of the vial to ensure full recovery of the protein into solution. It is recommended to reconstitute the lyophilized product with sterile water at 0.1 mg/ml, which can be further diluted into other aqueous solutions.
<b>Stability and Storage</b>	12 months from date of receipt when stored at -20°C to -80°C as supplied. 1 month when stored at 4°C after reconstituting as directed. 3 months when stored at -20°C to -80°C after reconstituting as directed.

### Data



Induced chemotaxis of primary human T cells. A significant increase in migration over basal levels was reported in response to Human IL-16 starting at 5 ng/ml.



Non-reducing (-) and reducing (+) conditions in a 4 - 20% Tris-Glycine gel stained with Coomassie Blue. 1 μg of protein was loaded in each lane. Human IL-16 has a predicted Mw of 13.4 kDa.