



SZABO SCANDIC

Part of Europa Biosite

Produktinformation



Forschungsprodukte & Biochemikalien



Zellkultur & Verbrauchsmaterial



Diagnostik & molekulare Diagnostik



Laborgeräte & Service

Weitere Information auf den folgenden Seiten!
See the following pages for more information!



Lieferung & Zahlungsart

siehe unsere [Liefer- und Versandbedingungen](#)

Zuschläge

- Mindermengenzuschlag
- Trockeneiszuschlag
- Gefahrgutzuschlag
- Expressversand

SZABO-SCANDIC HandelsgmbH

Quellenstraße 110, A-1100 Wien

T. +43(0)1 489 3961-0

F. +43(0)1 489 3961-7

mail@szabo-scandic.com

www.szabo-scandic.com

[linkedin.com/company/szaboscandic](https://www.linkedin.com/company/szaboscandic) 

GFH171AF Recombinant Human GDF-15 (Animal-Free)

Description

Growth Differentiation Factor 15 (GDF-15) is a member of the Transforming Growth Factor β (TGF- β) family and is made by the placenta and cardiovascular tissues. GDF-15 regulates inflammatory and apoptotic pathways during cellular stress and injury. GDF-15 is emerging as a biomarker of early heart disease, such that increased levels of circulating GDF-15 are associated with an increased risk of developing heart failure.

This product is produced with no animal derived raw products. All processing and handling employs animal free equipment and animal free protocols.

Length	113 / 226 aa
Molecular Weight	12.4 / 24.8 kDa
Source	E. coli
Accession Number	Q99988
Purity	\geq 95% determined by reducing and non-reducing SDS-PAGE

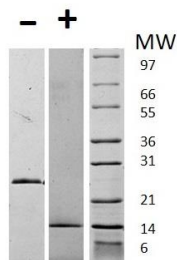
Specifications

Alternative Names	Growth Differentiation Factor 15, GDF15, GDF 15, MIC-1, placental TGF β , prostate differentiation factor
Biological Activity	Activity to be determined
Endotoxin Level	\leq 1.00 EU/ μ g as measured by kinetic LAL
Formulation	Lyophilized from a sterile (0.2 micron) filtered aqueous solution containing 0.1% Trifluoroacetic Acid (TFA)
AA Sequence	MARNGDHCPL GPGRCRLHT VRASLEDLGW ADWVLSPREV QVTMCIGACP SQFRAANMHA QIKTSLHRLK PDTVPAPCCV PASYNPMVLI QKTDTGVSLO TYDDLAKDC HCI

Preparation and Storage

Reconstitution	Centrifuge vial before opening. When reconstituting the product, gently pipet and wash down the sides of the vial to ensure full recovery of the protein into solution. It is recommended to reconstitute the lyophilized product with sterile water at 0.1 mg/ml, which can be further diluted into other aqueous solutions.
Stability and Storage	12 months from date of receipt when stored at -20°C to -80°C as supplied. 1 month when stored at 4°C after reconstituting as directed. 3 months when stored at -20°C to -80°C after reconstituting as directed.

Data



Non-reducing (-) and reducing (+) conditions in a 4 - 20% Tris-Glycine gel stained with Coomassie Blue. 1 μ g of protein was loaded in each lane. Human GDF-15 has a predicted Mw of 24.8 kDa (each monomer is 12.4 kDa).