



SZABO SCANDIC

Part of Europa Biosite

Produktinformation



Forschungsprodukte & Biochemikalien



Zellkultur & Verbrauchsmaterial



Diagnostik & molekulare Diagnostik



Laborgeräte & Service

Weitere Information auf den folgenden Seiten!
See the following pages for more information!



Lieferung & Zahlungsart

siehe unsere [Liefer- und Versandbedingungen](#)

Zuschläge

- Mindermengenzuschlag
- Trockeneiszuschlag
- Gefahrgutzuschlag
- Expressversand

SZABO-SCANDIC HandelsgmbH

Quellenstraße 110, A-1100 Wien

T. +43(0)1 489 3961-0

F. +43(0)1 489 3961-7

mail@szabo-scandic.com

www.szabo-scandic.com

[linkedin.com/company/szaboscandic](https://www.linkedin.com/company/szaboscandic) 

GFH3 Recombinant Human MCSF

Description

Macrophage Colony Stimulating Factor (MCSF) is a hematopoietic growth factor that is widely produced by a variety of cells. MCSF stimulates the proliferation and differentiation of hematopoietic stem cells into monocyte and macrophage cell types. MCSF also acts through the colony stimulating factor 1 receptor (CSF1R) to modulate processes involved in immunology, bone metabolism, fertility, and pregnancy. Human MCSF shows activity on mouse cells, however mouse MCSF shows no activity on human cells.

Length	159 / 218 aa
Molecular Weight	18.5 / 37.1 kDa
Source	E. coli
Accession Number	P09603
Purity	≥95% determined by reducing and non-reducing SDS-PAGE

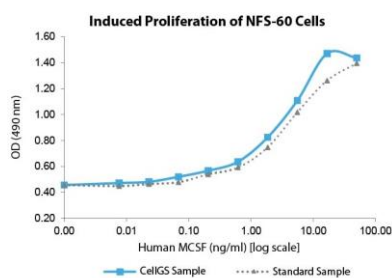
Specifications

Alternative Names	Macrophage Colony Stimulating Factor, M-CSF, MGI-IM, CSF-1
Biological Activity	Human MCSF is fully biologically active when compared to standard. The activity is determined by the ability to induce NFS-60 cells proliferation.
Endotoxin Level	≤1.00 EU/μg as measured by kinetic LAL
Formulation	Lyophilized from a sterile (0.2 micron) filtered aqueous solution containing 10 mM sodium phosphate, 50 mM sodium chloride, pH 8.0
AA Sequence	MEEVSEYCSH MIGSGHLQSL QRLIDSQMET SCQITFEFVD QEQLKDPVCY LKKAFLLVQD IMEDTMRFRD NTPNAIAIVQ LQELSLRLKS CFTKDYEEHD KACVRTFYET PLQLLEKVKV VFNETKNLLD KDWNIFSKNC NNSFAECSSQ GHERQSEGS

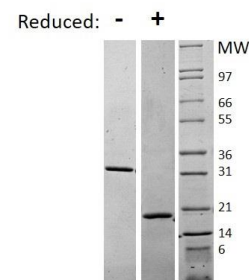
Preparation and Storage

Reconstitution	Centrifuge vial before opening. When reconstituting the product, gently pipet and wash down the sides of the vial to ensure full recovery of the protein into solution. It is recommended to reconstitute the lyophilized product with sterile water at 0.1 mg/ml, which can be further diluted into other aqueous solutions.
Stability and Storage	12 months from date of receipt when stored at -20°C to -80°C as supplied. 1 month when stored at 4°C after reconstituting as directed. 3 months when stored at -20°C to -80°C after reconstituting as directed.

Data



Induced proliferation of NFS-60 cells assay for Human MCSF. Cell proliferation was measured to calculate the ED50.



Non-reducing (-) and reducing (+) conditions in a 4 - 20% Tris-Glycine gel stained with Coomassie Blue. 1 μg of protein was loaded in each lane. Human MCSF has a predicted Mw of 37.1 kDa.