



# SZABO SCANDIC

Part of Europa Biosite

## Produktinformation



Forschungsprodukte & Biochemikalien



Zellkultur & Verbrauchsmaterial



Diagnostik & molekulare Diagnostik



Laborgeräte & Service

Weitere Information auf den folgenden Seiten!  
See the following pages for more information!



### Lieferung & Zahlungsart

siehe unsere [Liefer- und Versandbedingungen](#)

### Zuschläge

- Mindermengenzuschlag
- Trockeneiszuschlag
- Gefahrgutzuschlag
- Expressversand

### SZABO-SCANDIC HandelsgmbH

Quellenstraße 110, A-1100 Wien

T. +43(0)1 489 3961-0

F. +43(0)1 489 3961-7

[mail@szabo-scandic.com](mailto:mail@szabo-scandic.com)

[www.szabo-scandic.com](http://www.szabo-scandic.com)

[linkedin.com/company/szaboscandic](https://www.linkedin.com/company/szaboscandic) 

## GFH59 Recombinant Human CNTF

### Description

Ciliary Neurotrophic Factor (CNTF) is a neurotrophic factor that promotes the survival of neuronal cell populations, neurite outgrowth, and neurotransmitter synthesis. CNTF also plays an important protective role during nervous system injury.

<b>Length</b>	200 aa
<b>Molecular Weight</b>	22.9 kDa
<b>Source</b>	E. coli
<b>Accession Number</b>	P26441
<b>Purity</b>	≥95% determined by reducing and non-reducing SDS-PAGE

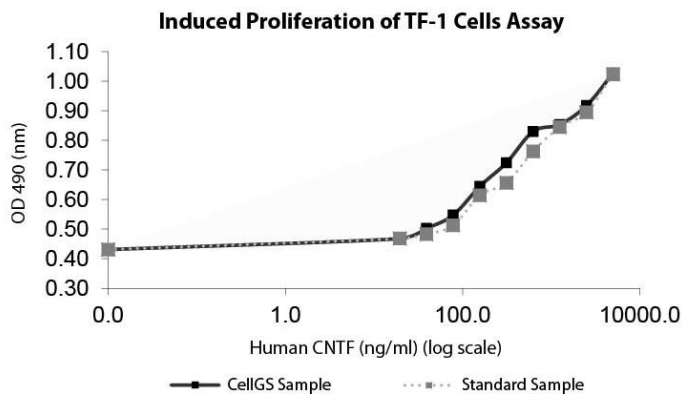
### Specifications

<b>Alternative Names</b>	Ciliary Neurotrophic Factor
<b>Biological Activity</b>	Human CNTF is fully biologically active when compared to standard. The activity is determined by the induced proliferation of TF-1 cells and it is typically less than 325 ng/ml. This corresponds to an expected specific activity of $3.1 \times 10^3$ units/mg.
<b>Endotoxin Level</b>	≤1.00 EU/μg as measured by kinetic LAL
<b>Formulation</b>	Lyophilized from a sterile (0.2 micron) filtered aqueous solution containing 10 mM sodium phosphate, pH 7.5
<b>AA Sequence</b>	MAFTEHSPLT PRRDLCSRS IWLARKIRSD LTALTESYVK HQGLNKNINL DSADGMPVAS TDQWSELTEA ERLQENLQAY RTFHVLLARL LEDQQVHFTP TEGDFHQAIH TLLQVAFA YQIEELMILL EYKIPNEAD GMPINVDGG LFEKKLWGLK VLQELSQWTV RSIHDLRFIS SHQTGIPARG SHYIANNKKM

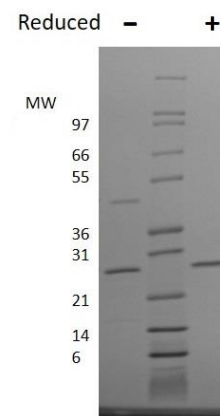
### Preparation and Storage

<b>Reconstitution</b>	Centrifuge vial before opening. When reconstituting the product, gently pipet and wash down the sides of the vial to ensure full recovery of the protein into solution. It is recommended to reconstitute the lyophilized product with sterile water at 0.1 mg/ml, which can be further diluted into other aqueous solutions. If a precipitate is observed, centrifuge the solution thoroughly and use only the soluble fraction (removing it from the precipitate). A 10% overfill has been added to compensate for any loss of protein in the precipitate.
<b>Stability and Storage</b>	12 months from date of receipt when stored at -20°C to -80°C as supplied. 1 month when stored at 4°C after reconstituting as directed. 3 months when stored at -20°C to -80°C after reconstituting as directed.

### Data



Induced proliferation of TF-1 cells assay for Human CNTF. Cell proliferation was measured to calculate the ED50, which is as expected around 250 ng/ml.



Non-reducing (-) and reducing (+) conditions in a 4 - 20% Tris-Glycine gel stained with Coomassie Blue. 1 μg of protein was loaded in each lane. Human CNTF has a predicted Mw of 22.9 kDa.