



SZABO SCANDIC

Part of Europa Biosite

Produktinformation



Forschungsprodukte & Biochemikalien



Zellkultur & Verbrauchsmaterial



Diagnostik & molekulare Diagnostik



Laborgeräte & Service

Weitere Information auf den folgenden Seiten!
See the following pages for more information!



Lieferung & Zahlungsart

siehe unsere [Liefer- und Versandbedingungen](#)

Zuschläge

- Mindermengenzuschlag
- Trockeneiszuschlag
- Gefahrgutzuschlag
- Expressversand

SZABO-SCANDIC HandelsgmbH

Quellenstraße 110, A-1100 Wien

T. +43(0)1 489 3961-0

F. +43(0)1 489 3961-7

mail@szabo-scandic.com

www.szabo-scandic.com

[linkedin.com/company/szaboscandic](https://www.linkedin.com/company/szaboscandic) 

GFH86 Recombinant Human IL-15

Description

Interleukin-15 (IL-15) is a widely expressed proinflammatory cytokine that is structurally and functionally related to interleukin-2 (IL-2). IL-15 signals through JAK kinases to activate STAT3, STAT5, and STAT6 transcription factors. IL-15 regulates the activation of T cells, neutrophils, and macrophages, and is a stimulatory cytokine promoting dendritic cell function. IL-15 expression is dysregulated in chronic inflammatory disorders, including rheumatoid arthritis, psoriasis, and pulmonary inflammatory diseases. Human IL-15 shows activity on mouse cells.

Length	115 aa
Molecular Weight	12.9 kDa
Source	E. coli
Accession Number	P40933
Purity	≥95% determined by reducing and non-reducing SDS-PAGE

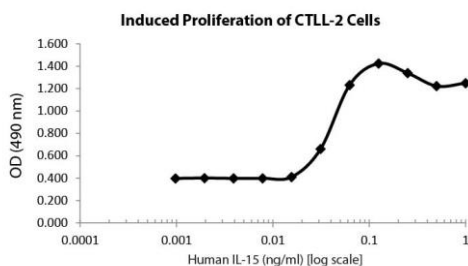
Specifications

Alternative Names	Interleukin-15, interleukin 15, IL15, IL 15
Biological Activity	Human IL-15 is fully biologically active when compared to standard. The activity is determined by the ability to induce CTLL-2 cells proliferation and it is typically less than 5 ng/ml. This corresponds to an expected specific activity of 2×10^5 units/mg.
Endotoxin Level	≤1.00 EU/μg as measured by kinetic LAL
Formulation	Lyophilized from a sterile (0.2 micron) filtered aqueous solution containing 10 mM Sodium Bicarbonate, pH 8.0
AA Sequence	MNWNVISDL KKIEDLIQSM HIDATLYTES DVHPCKVTA MKCFLLLELQV ISLESGDASI HDTVENLIIL ANNSLSSNGN VTESGCKECE ELEEKNIKEF LQSFVHIVQM FINTS

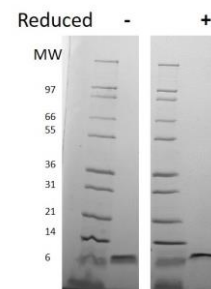
Preparation and Storage

Reconstitution	Centrifuge vial before opening. When reconstituting the product, gently pipet and wash down the sides of the vial to ensure full recovery of the protein into solution. It is recommended to reconstitute the lyophilized product with sterile 10 mM HCl at 0.1 mg/ml, which can be further diluted into other aqueous solutions.
Stability and Storage	12 months from date of receipt when stored at -20°C to -80°C as supplied. 1 month when stored at 4°C after reconstituting as directed. 3 months when stored at -20°C to -80°C after reconstituting as directed.

Data



Induced proliferation of CTLL-2 cells for Human IL-15. Cell proliferation was measured to calculate the ED50, which is as expected less than 5 ng/ml.



Non-reducing (-) and reducing (+) conditions in a 4 - 20% Tris-Glycine gel stained with Coomassie Blue. 1 μg of protein was loaded in each lane. Human IL-15 has a predicted Mw of 12.9 kDa.