



SZABO SCANDIC

Part of Europa Biosite

Produktinformation



Forschungsprodukte & Biochemikalien



Zellkultur & Verbrauchsmaterial



Diagnostik & molekulare Diagnostik



Laborgeräte & Service

Weitere Information auf den folgenden Seiten!
See the following pages for more information!



Lieferung & Zahlungsart

siehe unsere [Liefer- und Versandbedingungen](#)

Zuschläge

- Mindermengenzuschlag
- Trockeneiszuschlag
- Gefahrgutzuschlag
- Expressversand

SZABO-SCANDIC HandelsgmbH

Quellenstraße 110, A-1100 Wien

T. +43(0)1 489 3961-0

F. +43(0)1 489 3961-7

mail@szabo-scandic.com

www.szabo-scandic.com

[linkedin.com/company/szaboscandic](https://www.linkedin.com/company/szaboscandic) 

GFH8AF Recombinant Human GM-CSF (Animal-Free)

Description

Granulocyte-Macrophage Colony-Stimulating Factor (GM-CSF) is hematopoietic growth factor produced by endothelial cells, monocytes, fibroblasts, and T cells. GM-CSF stimulates the production of neutrophilic granulocytes, macrophages, and mixed granulocyte-macrophage colonies from bone marrow cells. GM-CSF promotes immune system development and regulates neutrophil function during infection. Human and mouse GM-CSF show no cross-reactivity.

This product is produced with no animal derived raw products. All processing and handling employs animal free equipment and animal free protocols.

Length	128 aa
Molecular Weight	14.6 kDa
Source	E. coli
Accession Number	P04141
Purity	≥95% determined by reducing and non-reducing SDS-PAGE

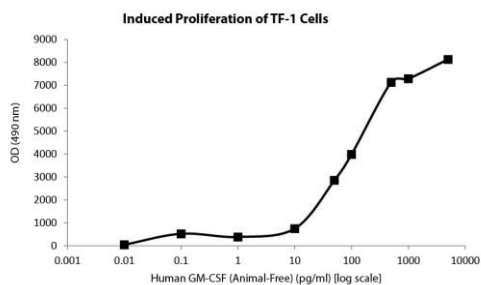
Specifications

Alternative Names	Granulocyte-Macrophage Colony-Stimulating Factor, GMCSF, CSF-2, MGI1GM, colony stimulating factor 2 (granulocyte-macrophage), colony-stimulating factor, CSF-2, MGIIGM, sargramostim, molgramostin
Biological Activity	Human GM-CSF (Animal-Free) is fully biologically active when compared to standard. The activity is determined by a proliferation assay using TF-1 cells and it is typically less than 200 pg/ml. This corresponds to an expected specific activity of 5×10^6 units/mg.
Endotoxin Level	≤1.00 EU/μg as measured by kinetic LAL
Formulation	Lyophilized from a sterile (0.2 micron) filtered aqueous solution containing 10 mM sodium phosphate, pH 7.5
AA Sequence	MAPARSPSPS TQPWEHVNAI QEARRLLNLS RDTAEMNET VEVISEMFDL QEPTCLQTRL ELYKQGLRGS LTKLKGPLTM MASHYKQHCP PTPETSCATQ IITFESFKEN LKDFLLVIPF DCWEPVQE

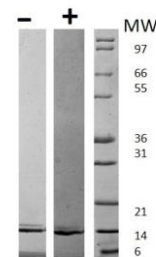
Preparation and Storage

Reconstitution	Centrifuge vial before opening. When reconstituting the product, gently pipet and wash down the sides of the vial to ensure full recovery of the protein into solution. It is recommended to reconstitute the lyophilized product with sterile water at 0.1 mg/ml, which can be further diluted into other aqueous solutions.
Stability and Storage	12 months from date of receipt when stored at -20°C to -80°C as supplied. 1 month when stored at 4°C after reconstituting as directed. 3 months when stored at -20°C to -80°C after reconstituting as directed.

Data



Induced proliferation of TF-1 cells assay for Human GM-CSF.



Non-reducing (-) and reducing (+) conditions in a 4 - 20% Tris-Glycine gel stained with Coomassie Blue. 1 μg of protein was loaded in each lane. Human GM-CSF has a predicted Mw of 14.6 kDa.